

**CITY OF ANAHEIM**

**COMMUNITY FACILITIES DISTRICT NO. 1989-3**

**ADMINISTRATION REPORT  
FISCAL YEAR 2011-12**

**AUGUST 5, 2011**

Public Finance  
Facilities Planning  
Urban Economics

---

Newport Beach  
Riverside  
San Francisco

**CITY OF ANAHEIM**

**COMMUNITY FACILITIES DISTRICT NO. 1989-3**

**ADMINISTRATION REPORT  
FISCAL YEAR 2011-12**

**Prepared for**

**CITY OF ANAHEIM**  
200 South Anaheim Boulevard  
Anaheim, California 92805

**Prepared by**

**DAVID TAUSSIG & ASSOCIATES, INC.**  
5000 Birch Street, Suite 6000  
Newport Beach, CA 92660  
(949) 955-1500

## *Table of Contents*

<u>Section</u>	<u>Page</u>
<b>INTRODUCTION</b> .....	<b>1</b>
<b>I. BACKGROUND</b> .....	<b>2</b>
<b>CFD LOCATION AND BOUNDARIES</b> .....	2
<b>CFD FORMATION</b> .....	2
<b>CFD BONDED INDEBTEDNESS</b> .....	2
<b>FACILITIES FINANCED BY CFD No. 1989-1</b> .....	2
<b>II. SPECIAL TAX REQUIREMENT</b> .....	<b>3</b>
<b>III. SPECIAL TAX RATES</b> .....	<b>5</b>
<b>BILLING AND COLLECTION OF SPECIAL TAXES</b> .....	5
<b>MAXIMUM SPECIAL TAX</b> .....	7
<b>IV. SPECIAL TAX CLASSIFICATIONS AND DEVELOPMENT STATUS</b> .....	<b>8</b>
<b>SPECIAL TAX CLASSIFICATIONS</b> .....	8
<b>DEVELOPMENT STATUS</b> .....	9
<b>V. DELINQUENT SPECIAL TAXES</b> .....	<b>10</b>
<b>FORECLOSURE COVENANT</b> .....	10
<b>VI. FUNDS AND ACCOUNTS</b> .....	<b>11</b>
<b>DESCRIPTION OF FUNDS AND ACCOUNTS</b> .....	11
<b>FLOW OF FUNDS</b> .....	11
<b>ACCOUNT BALANCES</b> .....	12
<b>VII. DISCLOSURE REPORTS AND NOTICES</b> .....	<b>13</b>
<b>CALIFORNIA DEBT AND INVESTMENT ADVISORY COMMISSION YEARLY FISCAL STATUS REPORT</b> .....	13
<b>REPORT OF SPECIAL TAX REVENUES, EXPENDITURES, AND STATUS OF IMPROVEMENTS</b> .....	13
<b>CONTINUING DISCLOSURE REPORT</b> .....	13
<b>NOTICE OF SPECIAL TAX</b> .....	14
<b>EXHIBIT A – Boundary Map</b>	
<b>EXHIBIT B – Debt Service Schedule</b>	
<b>EXHIBIT C – Rate and Method of Apportionment of the Special Tax</b>	
<b>EXHIBIT D – Special Tax Roll, Fiscal Year 2011-12</b>	
<b>EXHIBIT E – Delinquency Report</b>	
<b>EXHIBIT F – CDIAC Report</b>	
<b>EXHIBIT G – Sample Notice of Special Tax</b>	

## **INTRODUCTION**

---

This report provides an analysis of the financial and administrative obligations of Community Facilities District No. 1989-3 ("CFD No. 1989-3") of the City of Anaheim (the "City") resulting from the sale of \$9,705,000 in special tax bonds in June 1989 (the "1989 Bonds"). CFD No. 1989-3 is a legally constituted governmental entity established under the Mello-Roos Community Facilities Act of 1982 (the "Act"), as amended. The Act provides a method for the financing of certain public capital facilities and services. The 1989 bonds, which were refunded in 1999, were issued for purposes of acquiring, designing and constructing certain roadway and police substation facilities necessitated by development within the community facilities district. The bonded indebtedness of CFD No. 1989-3 is both secured and repaid through the annual levy and collection of special taxes from all property subject to the special tax. In calculating the special tax liability for Fiscal Year ("FY") 2011-12, this report examines the current and prior fiscal years' financial obligations as well as development status within the district.

This report is organized into the following sections:

- Section I - Background
- Section II –Special Tax Requirement
- Section III – Special Tax Rates
- Section IV – Special Tax Classifications and Development Update
- Section V – Delinquent Special Taxes
- Section VI – Funds and Accounts
- Section VII - Disclosure Reports and Notices

## **I. BACKGROUND**

---

### **CFD LOCATION AND BOUNDARIES**

CFD No. 1989-3 (commonly known as "The Summit") encompasses approximately 591 acres located in the eastern portion of the City of Anaheim, in the Weir Canyon Area, just south of State Route 91. A copy of the boundary map is included in Exhibit A.

### **CFD FORMATION**

On December 20, 1988 the City Council of the City of Anaheim (the "City") acting on behalf of CFD No. 1989-3 adopted a resolution of intention to establish the CFD, authorize the levy of special taxes, and incur bond indebtedness in an amount not to exceed \$11,500,000. A public hearing was held on April 4, 1989 and immediately thereafter an election conducted in which the qualified electors voted to authorize the levy of special taxes.

### **CFD BONDED INDEBTEDNESS**

Special tax bonds in the amount of \$9,705,000 were issued in June 1989 (the "1989 Bonds"). In March 1999, the 1989 Bonds were refunded in November 1999 by the issuance of \$9,085,000 in Special Tax Bonds (the "1999 Bonds") by the City of Anaheim (the "City").

### **FACILITIES AND SERVICES FINANCED BY CFD No. 1989-3**

A general description of the facilities authorized to be funded by CFD No. 1989-3 is listed below.

- Improvements to Weir Canyon Road, Oak Hills Drive, and Serrano Avenue;
- Improvements to Santa Ana Canyon Road including from Imperial Highway to East Hills (Bauer Ranch);
- Regional Water Supply Storage System;
- Contribution to police station (site and facilities) located on Santa Ana Canyon Road;
- Contribution to library site located on Santa Ana Canyon Road; and
- Ongoing Police and Fire Protection Services.

## II. SPECIAL TAX REQUIREMENT

The FY 2011-12 special tax requirement for CFD No. 1989-3 is \$876,703. The special tax requirement is a function of any surplus or deficit from FY 2010-11, debt service through calendar year 2012, projected administrative expenses, projected earnings, and projected delinquencies. The debt service schedule is included in Exhibit B. The FY 2011-12 special tax requirement is shown in Table II-1 and the percentage allocation of budgeted expenditures by line item is shown in Graph II-1 below.

**TABLE II-1**

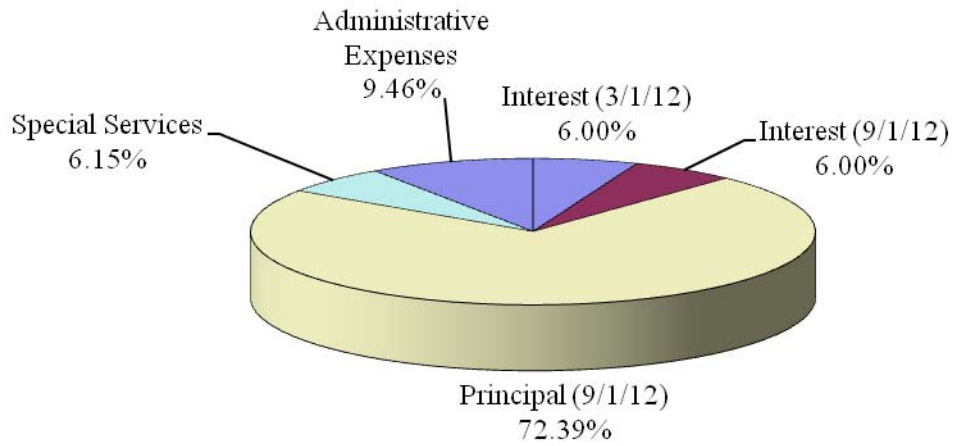
**CITY OF ANAHEIM CFD NO. 1989-3  
FISCAL YEAR 2011-12  
SPECIAL TAX REQUIREMENT**

<b>Fund Balances as of May 31, 2011</b>		<b>\$882,330</b>
Special Tax Fund	\$865,371	
Bond Fund	\$16,958	
Surplus Reserve Funds <sup>1</sup>	\$0	
<b>Remaining Fiscal Year 2009-2010 Sources of Funds</b>		<b>\$19,496</b>
Pending Special Tax Deposits <sup>2</sup>	\$1,869	
Reserve Fund Earnings	\$17,627	
<b>Remaining Fiscal Year 2009-2010 Obligations</b>		<b>(\$797,759)</b>
Interest Due September 1, 2010	(\$75,932)	
Principal Due September 1, 2010	(\$670,000)	
Administrative Expenses	(\$31,827)	
Rebate Liability	(\$20,000)	
<b>Estimated Fiscal Year 2009-2010 Surplus / (Draw on Reserve Fund)</b>		<b>\$104,067</b>
<b>Budgeted Fiscal Year 2010-2011 Expenditures</b>		<b>(\$980,769)</b>
Interest Due March 1, 2011	(\$58,847)	
Interest Due September 1, 2011	(\$58,847)	
Principal Due September 1, 2011	(\$710,000)	
County Collection Charge	(\$2,805)	
Administrative Expenses	(\$90,000)	
Delinquency Contingency	\$0	
Special Services	(\$60,270)	
<b>Fiscal Year 2010-2011 Special Tax Requirement</b>		<b>\$876,703</b>

<sup>1</sup> Reserve Funds in excess of the Reserve Fund Requirement.

<sup>2</sup> Special taxes collected but not yet remitted by the County.

**GRAPH II-1**  
**COMMUNITY FACILITIES DISTRICT NO. 1989-3**  
**FISCAL YEAR 2011-2012 BUDGETED EXPENDITURES**



### **III. SPECIAL TAX RATES**

---

The Rate and Method of Apportionment of Special Tax (the "RMA") contains the special tax apportionment methodology. A copy of the RMA is included in Exhibit C. The RMA apportions the special tax requirement in four steps as follows:

- First, the special tax is levied against each parcel of Developed Property<sup>3</sup> up to 87% of the applicable special tax rate set forth in Table 1 of the RMA and up to \$767 per acre of Undeveloped Property<sup>4</sup>. If the resulting special taxes are less than the special tax requirement, the second step is applied.
- Second, the special tax is on each parcel of Undeveloped Property is increased from the amount calculated pursuant to the first step up to \$4,200 per acre. Again, if the resulting special taxes are less than the special tax requirement, the third step is applied.
- Third, the special tax is on Developed Property is increased from the amounts calculated pursuant to the first step up to 100% of the applicable Table 1 rates.
- Fourth, if still additional special taxes are needed, the special tax on each parcel of Developed Property is increased from the amount calculated pursuant to the third step up to the Base Maximum Special Tax.

The special tax requirement set forth in Section III of this report is fully funded with a levy equal to 71.37% of the amounts prescribed in the first step above. Total special taxes equal \$1,411,864<sup>5</sup>. The FY 2011-12 special tax rates are shown in Table III-1 on the following page. Graph III-1 depicts the trend of actual special tax rates during the last ten fiscal years. The Special Tax Roll, which lists the actual special tax levied against each parcel, is shown in Exhibit D.

#### **BILLING AND COLLECTION OF SPECIAL TAXES**

CFD No. 1989-3 special taxes are billed and collected, along with regular property taxes, by the Treasurer Tax Collector of the County of Orange. In accordance with the Act, the special taxes are submitted to the Auditor-Controller of the County of Orange no later than August 10 each year. As required by the County of Orange, the submittal package includes a certified copy of the ordinance authorizing the levy of the special taxes along with the list of special taxes by Assessor's Parcel Number in the specified electronic format. The County of Orange has assigned District Code 051 - Tax Code R9 to CFD No. 1989-3. The special taxes are remitted by the Treasurer Tax Collector in accordance with the following schedule:

- |                      |             |                      |          |
|----------------------|-------------|----------------------|----------|
| • Secured Payment #1 | November 9  | • Secured Payment #5 | March 15 |
| • Secured Payment #2 | December 8  | • Secured Payment #6 | April 26 |
| • Secured Payment #3 | December 22 | • Secured Payment #7 | May 24   |
| • Secured Payment #4 | January 19  | • Secured Payment #8 | July 12  |

---

<sup>3</sup> Developed Property is defined as any parcel for which a building permit has been issued as of March 1 of the fiscal year preceding the fiscal year for which the special tax is being levied.

<sup>4</sup> Undeveloped Property includes all taxable property which is not classified as Developed Property.

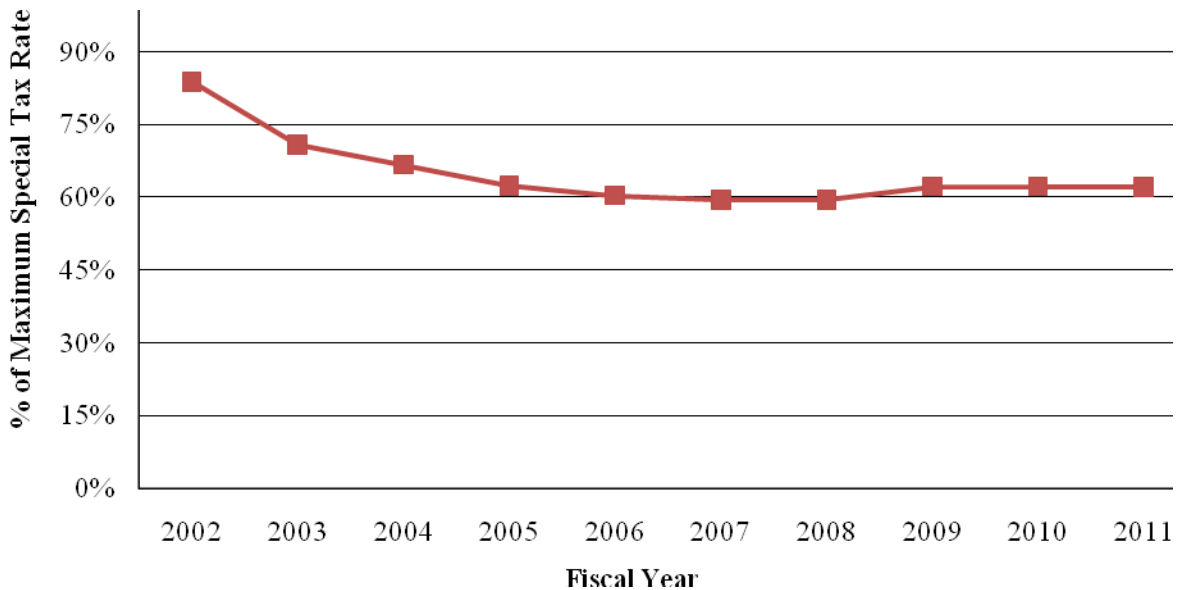
<sup>5</sup> Determined by application of Steps 1, 2, and 3.



**TABLE III-1  
CITY OF ANAHEIM CFD NO. 1989-3  
SPECIAL TAX RATES**

TAX CLASS	LAND USE	FY 2011-12 SPECIAL TAX	FY 2010-11 SPECIAL TAX
1	SINGLE FAMILY DETACHED (> 3,200 SF)	\$732.10	\$733.50
2	SINGLE FAMILY DETACHED (2,000 – 3,200 SF)	\$565.69	\$566.75
3	SINGLE FAMILY DETACHED (< 2,000 SF) OR PAIRED HOME	\$332.83	\$333.45
4	SINGLE FAMILY ATTACHED	NA	NA
5	CONDOMINIUM	\$232.86	\$233.30
6	APARTMENT	NA	NA
7	COMMERCIAL/INDUSTRIAL ACRE	NA	NA
8	RELIGIOUS PROPERTY ACRE	NA	NA

**GRAPH III-1  
COMMUNITY FACILITIES DISTRICT NO. 1989-3  
TREND OF ACTUAL SPECIAL TAX RATES DURING THE LAST TEN FISCAL YEARS**



**MAXIMUM SPECIAL TAX**

The Maximum Special Tax for a parcel of Developed Property is equal to the greater of (i) the Base Maximum Special Tax or (ii) the applicable special tax rate set forth in Table 1 of the RMA. The Base Maximum Special Tax is equal to \$0.10 per square foot of land or \$4,356.00 per acre. The Table 1 special tax rates vary by land use type and by building square footage in the case of single family residential homes and are shown in Table III-2 below.

**TABLE III-2**

**CITY OF ANAHEIM CFD NO. 1989-3  
TABLE 1 SPECIAL TAX RATES**

<b>TAX CLASS</b>	<b>LAND USE</b>	<b>TABLE 1 SPECIAL TAX</b>
1	SINGLE FAMILY DETACHED (> 3,200 SF)	\$1,179.00
2	SINGLE FAMILY DETACHED (2,000 – 3,200 SF)	\$911.00
3	SINGLE FAMILY DETACHED (< 2,000 SF) OR PAIRED HOME	\$536.00
4	SINGLE FAMILY ATTACHED	\$456.00
5	CONDOMINIUM	\$375.00
6	APARTMENT	\$241.00
7	COMMERCIAL/INDUSTRIAL ACRE	\$2,628.00
8	RELIGIOUS PROPERTY ACRE	\$1,314.00

**IV. SPECIAL TAX CLASSIFICATIONS AND DEVELOPMENT STATUS**

---

**SPECIAL TAX CLASSIFICATIONS**

The RMA establishes seven Developed Property special tax classifications based on land use type and building square footage in the case of single family residential homes. The Developed Property classifications are shown in Table IV-1 below.

---

**TABLE IV-1**  
**CITY OF ANAHEIM CFD NO. 1989-3**  
**DEVELOPED PROPERTY CLASSIFICATIONS**

<b>TAX CLASS</b>	<b>DESIGNATION</b>	<b>BUILDING SQUARE FOOTAGE</b>
1	SINGLE FAMILY DETACHED	> 3,200 SF
2	SINGLE FAMILY DETACHED	2,000 – 3,200 SF
3	SINGLE FAMILY DETACHED - OR - PAIRED HOME	<2,000 SF
4	SINGLE FAMILY ATTACHED	NA
5	CONDOMINIUM	NA
6	APARTMENT	NA
7	COMMERCIAL/INDUSTRIAL	NA
8	RELIGIOUS PROPERTY	NA

As footnoted previously, Developed Property includes all parcels for which a building permit was issued as of the March 1 preceding the fiscal year for which the special tax is being levied. Hence, all property in CFD No. 1989-3 for which building permits were issued prior to March 1, 2010 will be classified as Developed Property in FY 2011-12. All remaining property that is subject to the special tax, if any, will be classified as Undeveloped Property.

**DEVELOPMENT STATUS**

CFD No. 1989-3 is "built-out." In other words, all of the land has been subdivided and is in its final configuration and a building permit has been issued for each parcel that is subject to the special tax. As shown in Table IV-2 below, CFD No. 1989-3 includes a total of 2,009 residential dwelling units.

**TABLE IV-2**

**CITY OF ANAHEIM CFD NO. 1989-3  
CUMULATIVE DEVELOPED PROPERTY**

<b>TAX CLASS</b>	<b>LAND USE</b>	<b>BUILDING SQUARE FOOTAGE</b>	<b>FY 2010-11 (UNITS/ACRES)</b>
1	SINGLE FAMILY DETACHED	> 3,200 SF	269
2	SINGLE FAMILY DETACHED	2,000 – 3,200 SF	725
3	SINGLE FAMILY DETACHED - OR - PAIRED HOME	<2,000 SF	333
4	SINGLE FAMILY ATTACHED	NA	NA
5	CONDOMINIUM	NA	682
6	APARTMENT	NA	NA
7	COMMERCIAL/INDUSTRIAL	NA	NA
8	RELIGIOUS PROPERTY	NA	NA

**V. DELINQUENT SPECIAL TAXES**

As of June 23, 2011, the County had collected \$862,253 of the \$878,355 in special taxes levied for FY 2010-11 resulting in a delinquency rate of 1.83 percent, as presented in Table V-1 below. Subject to the foreclosure covenant provisions discussed below, delinquent special taxes are subject to the same penalties and the same procedure, sale, and lien priority in case of delinquency as is provided for ad valorem property taxes. Graph V-1 illustrates the trend of special tax delinquencies in recent years. Of the 2,009 parcels that were subject to the special tax, 53 failed to pay all or some of the FY 2010-2011 special taxes in a timely manner. A detailed report of delinquent parcels is included as Exhibit E.

**TABLE V-1**

**CITY OF ANAHEIM CFD NO. 1989-3  
SPECIAL TAX DELINQUENCIES SUMMARY**

<b>FISCAL YEAR</b>	<b>AMOUNT ENROLLED</b>	<b>CURRENT AMOUNT DELINQUENT</b>	<b>CURRENT PARCELS DELINQUENT</b>	<b>CURRENT PERCENT DELINQUENT</b>
<b>2010-2011</b>	\$878,355	\$16,102	53	1.83%
<b>2009-2010</b>	\$878,355	\$4,234	12	0.48%
<b>2008-2009</b>	\$839,138	\$3,121	8	0.37%
<b>2007-2008</b>	\$839,138	\$1,306	3	0.16%
<b>2006-2007</b>	\$852,105	\$663	3	0.08%

**FORECLOSURE COVENANT**

In the event of a delinquency in the payment of any installment of special taxes, CFD No. 1989-3 is authorized by the Act to order institution of an action in the Superior Court of the State to foreclose any lien therefore. In such action the real property subject to the special taxes may be sold at a judicial foreclosure sale. However, such judicial foreclosure proceedings are not mandatory. If the property owner is delinquent in the payment of their special tax in an amount equal to or less than \$150, CFD No. 1989-3 is not required to order foreclosure proceedings. Notwithstanding the foregoing, CFD No. 1989-3 has covenanted in the Fiscal Agent Agreement by and between the City and U.S. Bank National Association (the "Agreement") that it will commence judicial foreclosure proceedings if any single property owner is delinquent in the payment of more than \$150 in special taxes, within 150 days following the date of notice of the delinquency.

## **VI. FUNDS AND ACCOUNTS**

---

### **DESCRIPTION OF FUNDS AND ACCOUNTS**

#### **FISCAL AGENT AGREEMENT - CFD No. 1989-3**

Seven funds for CFD No. 1989-3 were established under the Indenture. These funds included the Special Tax Fund, Administrative Expense Fund, Bond Fund, Reserve Fund, Improvement Fund, Cost of Issuance Fund, and Services Fund. The Improvement Fund consists of two accounts: (i) the Series 1989 Account established to pay the project costs of improvements originally financed by the Series 1989 Bonds; and (ii) the Series 1999 Account established to pay the project costs of improvements financed by the Series 1999 Bonds. The Series 1989 Account was created exclusively to pay project costs until an Officer's Certificate is filed stating that the portion of the Project financed by the Series 1989 Bonds has been paid. Similarly, the Series 1999 Account was created exclusively to pay project costs until an Officer's Certificate is filed stating that the portion of the Project financed by the Series 1999 Bonds has been paid. Upon receipt of an Officer's Certificate, the Fiscal Agent will transfer any money remaining in the Improvement Fund to the Redemption Fund to optionally redeem bonds and to the Bond Fund to pay interest on the bonds. The Costs of Issuance Fund was created exclusively to pay the costs of issuance of the CFD No. 1989-3 bonds. All known costs in connection with the issuance of bonds have been paid. Pursuant to the Agreement, the remaining balance was transferred to the Administrative Expense Fund. The Reserve Fund was established exclusively to ensure payment of interest and principal due on the bonds in the event of a deficiency in the Bond Fund. The Reserve Requirement is equal to \$620,950. Any amount in excess of the Reserve Requirement shall be transferred to the Bond Fund for the purpose of making interest payments on the bonds. The Bond Fund was created exclusively for the payment of principal and interest and any premium on the bonds. The Services Fund was created to pay the cost of the municipal services funded in part by a portion of CFD No. 1989-3's special tax levy.

#### **FLOW OF FUNDS**

##### **CFD No. 1989-3**

All receipts from the annual collection of special taxes for CFD No. 1989-3 are deposited in the Special Tax Fund, which is held in trust by the Treasurer of the City. The Agreement instructs the Treasurer to transfer Special Tax Funds in the amount and priority set forth below:

1. **Administration Expense Fund** – an amount equal to the budgeted administration expenses of CFD No. 1989-3 for the current fiscal year;
2. **Bond Fund** – an amount sufficient to pay all interest and principal due on the bonds through the September 1 following the current fiscal year;
3. **Reserve Fund** – any amount that may be necessary to replenish the Reserve Requirement;
4. **Services Fund** – an amount equal to the budgeted cost of services for CFD No. 1989-3 for the current fiscal year, and;

5. **Administration Expense Fund** – all money remaining in the Special Tax Fund after the above four transfers are made will be deposited into the Administration Expense Fund.

Money held in any of the aforementioned funds and accounts can be invested by the Fiscal Agent at the direction of the City and in conformance with the limitations set forth in the Agreement. Investment interest earnings, if any, will generally be applied to the fund or account for which the investment is made. However, any interest earned on investment of the Improvement Fund will be transferred to the Special Tax Fund. In the event that the balance in the Reserve Fund exceeds the Reserve Requirement, interest earnings are to be transferred to the Bond Fund

**ACCOUNT BALANCES**

The funds and accounts relating to CFD No. 1989-3 established by the Agreement and the Indenture have the balances shown in Table III-1 on the following page:

---

**TABLE VI-1**

**CITY OF ANAHEIM CFD NO. 1989-3  
ACCOUNT BALANCES  
AS OF JUNE 30, 2011**

---

Administrative Expense Fund	\$15,765.89
Bond Fund	\$16,958.51
Reserve Fund	\$620,950.17
Special Tax Fund	\$865,371.25
Rebate Fund	\$18,934.13

---

## **VII. DISCLOSURE REPORTS AND NOTICES**

---

### **CALIFORNIA DEBT AND INVESTMENT ADVISORY COMMISSION YEARLY FISCAL STATUS REPORT**

Pursuant to Section 53359.5 of the Act, CFD No. 1989-3 is required to prepare and submit an annual report to the California Debt and Investment Advisory Commission (the "CDIAC") by October 30 of each year. The report contents are as follows:

1. The principal amount of bonds outstanding;
2. The balance in the bond reserve fund;
3. The balance in the capitalized interest fund, if any;
4. The number of parcels which are delinquent with respect to their special taxes, the amount that each parcel is delinquent, the length of time that each has been delinquent, and if and when foreclosure was commenced for each delinquent parcel;
5. The balance of any construction funds, if any; and
6. The assessed value of all parcels subject to special tax to repay the bonds as shown on the most recent equalized roll.

A copy of the FY 2009-2010 CDIAC report for CFD No. 1989-3 is attached hereto as Exhibit F.

### **REPORT OF SPECIAL TAX REVENUES, EXPENDITURES, AND STATUS OF IMPROVEMENTS**

Pursuant to Government Code Section 50075.3, an annual report of revenues, expenditures, and the status of improvements funded thereby must be filed in connection with all special tax measures approved on or after January 1, 2001. CFD No. 1989-3 is, therefore, exempt from this requirement.

### **CONTINUING DISCLOSURE REPORT**

A separate annual report (the "Report") is prepared pursuant to the Continuing Disclosure Agreement executed by the Authority and the Trustee in connection with the sale and issuance of the 1999 Bonds (the "Continuing Disclosure Agreement"). As provided in Section 2 of the Continuing Disclosure Agreement, a copy of the Report is filed with the designated national repository. As of the last Report, the national repository was the Municipal Securities Rulemaking Board's Electronic Municipal Market Access website ("EMMA").



## **NOTICE OF SPECIAL TAX**

A sample Notice of Special Tax for CFD No. 1989-3 is attached hereto as Exhibit G. On behalf of the City and CFD 1989-3, DTA prepares and furnishes Notices of Special Tax to enable homeowners to satisfy the notice requirements of Civil Code Section 1102.6b when selling their home. Pursuant to Government Code Section 53340.2, DTA furnishes notices within 5 working days of receiving a request for the notice.

K:\CLIENTS2\Anaheim\District Administration\CFD89\_3.ADM\11\_12\admrpt893\_11.doc

**EXHIBIT A**

---

***CITY OF ANAHEIM  
COMMUNITY FACILITIES DISTRICT No. 1989-3***

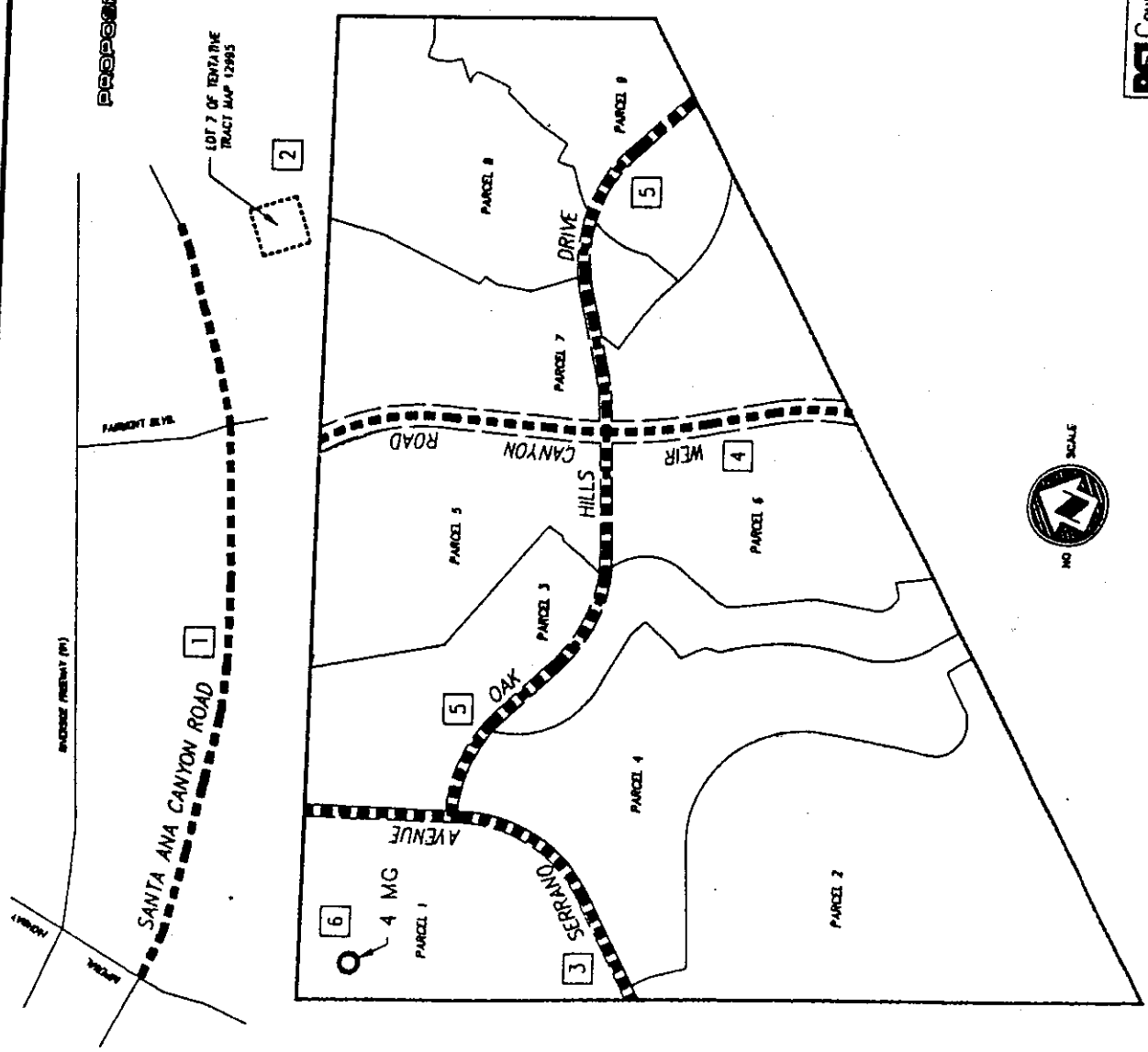
***Boundary Map***

---

# FACILITY PLAN FOR

## PROPOSED COMMUNITY FACILITIES DISTRICT 89-3 THE SUMMIT - CITY OF ANAHEIM

COUNTY OF ORANGE, CALIFORNIA



EDT 7 OF TENTA RIVE  
TRACT MAP 12993

REPORT REF. NO.	LEGEND	DESCRIPTION
1	-----	SANTA ANA CANYON ROAD
2	-----	POLICE SUB-STATION
3	-----	SERANNO AVENUE
4	-----	WEIR CANYON ROAD
5	-----	OAK HILLS DRIVE
6	○	WATER STORAGE TANK (4 MG)

### FACILITIES PLAN

Community Facilities District 89-3  
The Summit - City of Anaheim

COUNTY OF ORANGE, CALIFORNIA

Sheet 1 of 1 (Revised)

**BSI CONSULTANTS, INC.**  
 10000 Wilshire Blvd., Suite 1000  
 Los Angeles, CA 90024  
 Tel: 310-207-1000  
 Fax: 310-207-1001

**EXHIBIT B**

---

***CITY OF ANAHEIM  
COMMUNITY FACILITIES DISTRICT No. 1989-3***

***Debt Service Schedule***

---

**CITY OF ANAHEIM  
COMMUNITY FACILITIES DISTRICT NO. 1989-3  
DEBT SERVICE SCHEDULE**

<b>Fiscal Year</b>	<b>Payment Date</b>	<b>Principal</b>	<b>Interest</b>	<b>Debt Service</b>
2004-05	09/01/2005	\$530,000	\$163,642	\$693,642
2005-06	03/01/2006	\$0	\$145,742	\$145,742
2005-06	09/01/2006	\$540,000	\$145,742	\$685,742
2006-07	03/01/2007	\$0	\$133,322	\$133,322
2006-07	09/01/2007	\$555,000	\$133,322	\$688,322
2007-08	03/01/2008	\$0	\$120,557	\$120,557
2007-08	09/01/2008	\$590,000	\$120,557	\$710,557
2008-09	03/01/2009	\$0	\$106,692	\$106,692
2008-09	09/01/2009	\$615,000	\$106,692	\$721,692
2009-10	03/01/2010	\$0	\$91,932	\$91,932
2009-10	09/01/2010	\$640,000	\$91,932	\$731,932
2010-11	03/01/2011	\$0	\$75,932	\$75,932
2010-11	09/01/2011	\$670,000	\$75,932	\$745,932
2011-12	03/01/2012	\$0	\$58,847	\$58,847
2011-12	09/01/2012	\$710,000	\$58,847	\$768,847
2012-13	03/01/2013	\$0	\$40,653	\$40,653
2012-13	09/01/2013	\$745,000	\$40,653	\$785,653
2013-14	03/01/2014	\$0	\$21,097	\$21,097
2013-14	09/01/2014	\$785,000	\$21,097	\$806,097
<b>TOTALS</b>		<b>\$4,755,000</b>	<b>\$1,589,546</b>	<b>\$7,439,546</b>

# EXHIBIT C

---

***CITY OF ANAHEIM  
COMMUNITY FACILITIES DISTRICT NO. 1989-3***

***Rate and Method of Apportionment of Special Tax***

---

APPENDIX C

CITY OF ANAHEIM  
RATE AND METHOD OF APPORTIONMENT OF SPECIAL TAX

A Special Tax applicable to each Assessor's Parcel in Community Facilities District No. 1989-3 (The Summit) (herein "CFD No. 1989-3") shall be levied and collected according to the tax liability determined by the City Council of the City of Anaheim acting in its capacity as the legislative body of CFD No. 1989-3 (herein the "Board") through the application of the appropriate amount or rate for "Developed Property" or "Undeveloped Property," as described below. All of the property in CFD No. 1989-3, unless exempted by law or by the provisions of Section E below, shall be taxed for the purposes, to the extent and in the manner herein provided.

A. Definitions

The terms hereinafter set forth have the following meanings:

"Apartment" means a building or buildings comprised of residential units available for rental by the general public.

"Base Maximum Special Tax" means an amount equal to \$.10 per square foot of lot applicable to each Developed Property.

"Condominium" means a unit meeting the statutory definition of a condominium contained in Civil Code Section 1351.

"Developed Property" means all Assessor's Parcels in CFD No. 1989-3 for which a foundation building permit was issued as of March 1 of the preceding Fiscal Year.

"Fiscal Year" means the period starting on July 1 and ending the following June 30.

"Maximum Special Tax" means the maximum Special Tax, determined in accordance with Section C, that can be levied by the Board in any Fiscal Year for each class of Developed Property and for Undeveloped Property, as applicable.

"Paired Home" is a structure made up of two units, but no more than two units, that share a common wall, and is not a condominium.

"Religious Property" is all property that is currently exempt from ad valorem property taxes because it is owned and/or operated by a religious organization.

"Single-family Attached" is a structure made up of three or more units that share common walls, and is not a condominium.

"Taxable Property" is all of the area within the boundaries of CFD 1989-3 which is not exempt from the Special Tax pursuant to law or Section E below.

"Undeveloped Property" means all Taxable Property in CFD No. 1989-3 not classified as Developed Property.

B. Assignment to Land Use Class.

On July 1 of each year, all Taxable Property within CFD No. 1989-3 shall be categorized either as a Developed Property or an Undeveloped Property and shall be subject to tax in accordance with the rate and method of apportionment determined pursuant to Sections C and D below.

For purposes of determining the applicable Maximum Special Tax pursuant to Section C, Developed Property shall be assigned to one of the classes designated in Table 1 below. Developed Property consisting of single-family detached residential or paired home development shall be assigned to Classes 1 through 3 based upon the square footage of the improvements to be constructed on an Assessor's Parcel as set forth in the most recent building permit issued for such property. The square footage of a structure assigned to Classes 1 through 3 shall be calculated by measuring the internal living space of each unit located within the Assessor's Parcel, exclusive of garages or other structures which are not used as living spaces. Property shall be assigned to Classes 4 and 6 based upon whether it is a single-family attached, condominium or apartment development. Commercial and industrial property shall be assigned to Class 7. The square footage of a commercial or industrial building assigned to Class 7 shall be computed from the gross square footage for the building as reflected in the building plans upon which the building permit was issued.

C. Maximum Special Tax Rate.

1. Developed Property

The Maximum Special Tax for an Assessor's Parcel classified as Developed Property in Classes 1 through 7 shall be the greater of (i) the amount derived by multiplying the square footage of such Assessor's Parcel times the Base Maximum Special Tax or (ii) the amount determined by reference to Table 1. For purposes of this Section C, the acreage or square footage of an Assessor's Parcel shall be determined by reference to the most current parcel map or other subdivision tract map.

2. Undeveloped Property.

The Maximum Special Tax for Undeveloped Property shall be \$4,200 per acre.



Table 1

Maximum Special Taxes on Property  
in Community Facilities District No. 1989-3  
Per Unit (Residential) and  
Per Acre (Commercial/Industrial and Religious)

<u>Class</u>	<u>Land Use</u>	<u>Square Footage</u>	<u>Annual Special Tax Rates</u>	<u>Total Maximum Taxes Paid Over Expected Term Of Bond Issue (25 Years)</u>
1	Single Family Detached	> 3,200	\$1,179 per unit*	\$29,475 per unit
2	Single Family Detached	2,000 to 3,200	\$ 911 per unit*	\$22,775 per unit
3	Single Family Detached or Paired Home	< 2,000 for SFD No size limit for Paired Homes	\$ 536 per unit*	\$13,400 per unit
4	Single Family Attached		\$ 456 per unit*	\$11,400 per unit
5	Condominiums		\$ 375 per unit*	\$ 9,375 per unit
6	Apartments		\$ 241 per unit*	\$ 6,025 per unit
7	Commercial/ Industrial		\$2,628 per acre	\$65,700 per acre
8	Religious Property		\$1,314 per acre	\$32,850 per acre

\* Taxes may exceed these levels if the base maximum special tax alternative is used (\$0.10 per square foot of lot space). This would only apply to Classes 1 - 4 if the lot size is larger than usual for that category of land use. The base maximum tax will be applied if the lot is larger than 11,790 square feet in Class 1, larger than 9,110 square feet in Class 2, or larger than 5,360 square feet in Class 3, or larger than 4,560 in Class 4. The base maximum special tax would also apply to Classes 5 and 6 if they are built at densities less than 11.6 units per net acre for Class 5 and 18.0 units per net acre for Class 6.

D. Method of Apportionment of the Special Tax to Developed Property and Undeveloped Property.

Starting in Fiscal Year 1990-91 and for each following Fiscal Year, the Board shall determine the amount of money to be collected from Taxable Property in CFD No. 1989-3 in that Fiscal Year. Such amount shall include the sums necessary to pay for current debt service on indebtedness of CFD No. 1989-3, to create or replenish reserve funds determined necessary by CFD No. 1989-3, and to pay the annual cost of services, administrative expenses and construction expenses to be paid from Special Tax proceeds. The Board shall levy the Special Tax as follows until the amount of the levy equals the amount to be collected:

First: The Special Tax shall be levied on Developed Property and Undeveloped Property (other than those excluded in Section E below) in equal percentages up to the following rates: (1) for Developed Property, 87% of the applicable rate for each class for such Fiscal Year, determined by reference to Table 1, and (2) for Undeveloped Property, \$767 per acre;

Second: If additional monies are needed after the first step has been completed, the Special Tax shall be levied proportionately on each parcel of Undeveloped Property (excluding exempt property as outlined in Section E below) up to \$4,200 per acre;

Third: If additional monies are needed after the first two steps have been completed, then the levy of the Special Tax on Developed Property shall be increased in equal percentages above the rates levied pursuant to the first steps above, up to 100% of the applicable rate for each class for such Fiscal Year, determined by reference to Table 1;

Fourth: If additional monies are needed after the first three steps have been completed, then the levy of the Special Tax on each Assessor's Parcel of Developed Property (excluding exempt property as outlined in Section E below) whose maximum Special Tax is determined through the application of the Base Maximum Special Tax shall be increased up to the Maximum Special Tax for each such Assessor's Parcel by increasing the applicable rate for each class for such Fiscal Year determined by reference to Table 1 in equal percentages above the rates levied pursuant to step three above.

E. Limitations.

The Board shall not impose any Special Tax on any acres of land owned, conveyed or irrevocably offered for dedication to a public agency, on property owned by a homeowner's association or on land which is a public right of way or which is an unmanned utility easement making impractical its utilization for other than the purpose set forth in the easement.

F. Manner of Collection

The special taxes for CFD 1989-3 will be collected in the same manner and at the same time as ordinary ad valorem property taxes, and the special tax will be subject to the same penalties and procedures, sale, and lien priority in case of delinquency as is provided for ad valorem taxes.

**EXHIBIT D**

---

***CITY OF ANAHEIM  
COMMUNITY FACILITIES DISTRICT No. 1989-3***

***Special Tax Roll  
Fiscal Year 2010-11***

---

**City of Anaheim**  
**Community Facilities District No. 1989-3**  
**The Summit**  
**Special Tax Levy for Fiscal Year 2011-12**

<u>Assessor's Parcel Number</u>	<u>FY 2011-12 Special Tax</u>
354-271-01	\$ 332.83
354-271-02	\$ 332.83
354-271-03	\$ 332.83
354-271-04	\$ 332.83
354-271-05	\$ 332.83
354-271-06	\$ 332.83
354-271-07	\$ 332.83
354-271-08	\$ 332.83
354-271-09	\$ 332.83
354-271-10	\$ 332.83
354-271-11	\$ 332.83
354-271-12	\$ 332.83
354-271-13	\$ 332.83
354-271-14	\$ 332.83
354-271-15	\$ 332.83
354-271-16	\$ 332.83
354-271-17	\$ 332.83
354-271-18	\$ 332.83
354-271-19	\$ 332.83
354-271-20	\$ 332.83
354-271-21	\$ 332.83
354-271-22	\$ 332.83
354-272-01	\$ 332.83
354-272-02	\$ 332.83
354-272-03	\$ 332.83
354-272-04	\$ 332.83
354-272-05	\$ 332.83
354-272-06	\$ 332.83
354-272-07	\$ 332.83
354-272-08	\$ 332.83
354-272-09	\$ 332.83
354-272-10	\$ 332.83
354-272-11	\$ 332.83
354-272-12	\$ 332.83
354-272-13	\$ 332.83
354-272-14	\$ 332.83
354-272-15	\$ 332.83
354-272-16	\$ 332.83
354-272-17	\$ 332.83
354-272-18	\$ 332.83
354-272-19	\$ 332.83
354-272-20	\$ 332.83
354-272-21	\$ 332.83
354-272-22	\$ 332.83
354-272-23	\$ 332.83
354-272-24	\$ 332.83
354-272-25	\$ 332.83
354-272-26	\$ 332.83
354-272-27	\$ 332.83
354-272-28	\$ 332.83
354-272-29	\$ 332.83
354-272-30	\$ 332.83
354-272-31	\$ 332.83
354-272-32	\$ 332.83

**City of Anaheim  
Community Facilities District No. 1989-3  
The Summit  
Special Tax Levy for Fiscal Year 2011-12**

<u>Assessor's Parcel Number</u>	<u>FY 2011-12 Special Tax</u>
354-272-33	\$ 332.83
354-272-34	\$ 332.83
354-273-01	\$ 332.83
354-273-02	\$ 332.83
354-273-03	\$ 332.83
354-273-04	\$ 332.83
354-273-05	\$ 332.83
354-273-06	\$ 332.83
354-273-07	\$ 332.83
354-273-08	\$ 332.83
354-273-09	\$ 332.83
354-273-10	\$ 332.83
354-273-11	\$ 332.83
354-273-12	\$ 332.83
354-273-13	\$ 332.83
354-273-14	\$ 332.83
354-273-15	\$ 332.83
354-273-16	\$ 332.83
354-273-17	\$ 332.83
354-273-18	\$ 332.83
354-273-20	\$ 332.83
354-273-21	\$ 332.83
354-273-22	\$ 332.83
354-273-23	\$ 332.83
354-273-24	\$ 332.83
354-273-25	\$ 332.83
354-273-26	\$ 332.83
354-273-27	\$ 332.83
354-273-28	\$ 332.83
354-273-29	\$ 332.83
354-273-30	\$ 332.83
354-273-31	\$ 332.83
354-273-32	\$ 332.83
354-273-33	\$ 332.83
354-273-34	\$ 332.83
354-273-35	\$ 332.83
354-273-36	\$ 332.83
354-273-37	\$ 332.83
354-273-38	\$ 332.83
354-273-39	\$ 332.83
354-273-40	\$ 332.83
354-273-41	\$ 332.83
354-281-01	\$ 565.69
354-281-02	\$ 565.69
354-281-03	\$ 565.69
354-281-04	\$ 565.69
354-281-05	\$ 565.69
354-281-06	\$ 565.69
354-281-07	\$ 565.69
354-281-08	\$ 565.69
354-281-09	\$ 565.69
354-281-10	\$ 565.69
354-281-11	\$ 565.69
354-281-12	\$ 565.69

**City of Anaheim  
Community Facilities District No. 1989-3  
The Summit  
Special Tax Levy for Fiscal Year 2011-12**

<u>Assessor's Parcel Number</u>	<u>FY 2011-12 Special Tax</u>
354-281-13	\$ 565.69
354-282-01	\$ 565.69
354-282-02	\$ 565.69
354-282-03	\$ 565.69
354-282-04	\$ 565.69
354-282-05	\$ 565.69
354-282-06	\$ 565.69
354-282-07	\$ 565.69
354-282-08	\$ 565.69
354-282-09	\$ 565.69
354-282-10	\$ 565.69
354-282-11	\$ 565.69
354-282-12	\$ 565.69
354-282-13	\$ 565.69
354-282-14	\$ 565.69
354-282-15	\$ 565.69
354-282-16	\$ 565.69
354-282-17	\$ 565.69
354-282-18	\$ 565.69
354-282-19	\$ 565.69
354-282-20	\$ 565.69
354-282-21	\$ 565.69
354-282-22	\$ 565.69
354-282-23	\$ 565.69
354-282-24	\$ 565.69
354-282-25	\$ 565.69
354-283-01	\$ 565.69
354-283-02	\$ 565.69
354-283-03	\$ 565.69
354-283-04	\$ 565.69
354-283-05	\$ 565.69
354-283-06	\$ 565.69
354-283-07	\$ 565.69
354-283-08	\$ 565.69
354-283-09	\$ 565.69
354-291-01	\$ 565.69
354-291-02	\$ 565.69
354-291-03	\$ 565.69
354-291-04	\$ 565.69
354-292-01	\$ 565.69
354-292-02	\$ 565.69
354-292-03	\$ 565.69
354-292-04	\$ 565.69
354-292-05	\$ 565.69
354-292-06	\$ 565.69
354-292-07	\$ 565.69
354-292-08	\$ 565.69
354-292-09	\$ 565.69
354-293-01	\$ 565.69
354-293-02	\$ 332.83
354-293-03	\$ 565.69
354-293-04	\$ 565.69
354-293-05	\$ 565.69
354-293-06	\$ 565.69

**City of Anaheim**  
**Community Facilities District No. 1989-3**  
**The Summit**  
**Special Tax Levy for Fiscal Year 2011-12**

<u>Assessor's Parcel Number</u>	<u>FY 2011-12 Special Tax</u>
354-293-07	\$ 565.69
354-293-08	\$ 565.69
354-293-09	\$ 565.69
354-293-10	\$ 332.83
354-293-11	\$ 565.69
354-293-12	\$ 565.69
354-293-13	\$ 565.69
354-293-14	\$ 565.69
354-293-15	\$ 332.83
354-293-16	\$ 565.69
354-293-17	\$ 565.69
354-294-01	\$ 332.83
354-294-02	\$ 565.69
354-294-03	\$ 565.69
354-294-04	\$ 332.83
354-294-05	\$ 565.69
354-294-06	\$ 332.83
354-294-07	\$ 565.69
354-331-01	\$ 732.10
354-331-02	\$ 732.10
354-331-03	\$ 732.10
354-331-04	\$ 732.10
354-331-05	\$ 732.10
354-331-06	\$ 732.10
354-331-07	\$ 732.10
354-331-08	\$ 732.10
354-331-09	\$ 732.10
354-331-10	\$ 732.10
354-331-11	\$ 732.10
354-331-12	\$ 732.10
354-331-13	\$ 732.10
354-331-14	\$ 732.10
354-331-15	\$ 732.10
354-331-16	\$ 732.10
354-331-17	\$ 732.10
354-331-18	\$ 732.10
354-331-21	\$ 732.10
354-331-22	\$ 732.10
354-331-23	\$ 732.10
354-331-24	\$ 732.10
354-331-25	\$ 732.10
354-331-26	\$ 732.10
354-331-27	\$ 732.10
354-331-28	\$ 732.10
354-331-29	\$ 732.10
354-331-30	\$ 732.10
354-331-31	\$ 732.10
354-331-32	\$ 732.10
354-331-33	\$ 732.10
354-331-34	\$ 732.10
354-331-35	\$ 732.10
354-331-38	\$ 732.10
354-331-39	\$ 732.10
354-331-40	\$ 732.10

**City of Anaheim**  
**Community Facilities District No. 1989-3**  
**The Summit**  
**Special Tax Levy for Fiscal Year 2011-12**

<u>Assessor's Parcel Number</u>	<u>FY 2011-12 Special Tax</u>
354-331-41	\$ 732.10
354-331-42	\$ 732.10
354-331-43	\$ 732.10
354-331-44	\$ 732.10
354-331-45	\$ 732.10
354-331-46	\$ 732.10
354-331-49	\$ 732.10
354-331-50	\$ 732.10
354-331-51	\$ 732.10
354-331-52	\$ 732.10
354-331-53	\$ 732.10
354-331-54	\$ 732.10
354-331-55	\$ 732.10
354-341-02	\$ 732.10
354-341-03	\$ 732.10
354-341-04	\$ 732.10
354-341-05	\$ 732.10
354-341-08	\$ 732.10
354-341-09	\$ 732.10
354-341-10	\$ 732.10
354-341-11	\$ 732.10
354-341-12	\$ 732.10
354-341-13	\$ 732.10
354-341-14	\$ 732.10
354-341-15	\$ 732.10
354-341-16	\$ 732.10
354-341-17	\$ 732.10
354-341-20	\$ 565.69
354-341-21	\$ 565.69
354-341-22	\$ 565.69
354-341-23	\$ 565.69
354-341-24	\$ 332.83
354-341-25	\$ 565.69
354-341-26	\$ 565.69
354-341-27	\$ 565.69
354-341-28	\$ 332.83
354-341-29	\$ 565.69
354-341-30	\$ 565.69
354-341-31	\$ 565.69
354-341-32	\$ 565.69
354-341-33	\$ 332.83
354-341-34	\$ 565.69
354-341-35	\$ 565.69
354-341-36	\$ 565.69
354-341-37	\$ 332.83
354-341-38	\$ 565.69
354-341-39	\$ 565.69
354-341-40	\$ 332.83
354-341-41	\$ 565.69
354-341-42	\$ 565.69
354-341-43	\$ 332.83
354-341-44	\$ 565.69
354-341-45	\$ 565.69
354-341-46	\$ 565.69



**City of Anaheim**  
**Community Facilities District No. 1989-3**  
**The Summit**  
**Special Tax Levy for Fiscal Year 2011-12**

<u>Assessor's Parcel Number</u>	<u>FY 2011-12 Special Tax</u>
354-341-47	\$ 332.83
354-351-01	\$ 565.69
354-351-02	\$ 565.69
354-351-03	\$ 565.69
354-351-04	\$ 565.69
354-351-05	\$ 565.69
354-351-06	\$ 565.69
354-351-07	\$ 565.69
354-351-08	\$ 565.69
354-351-09	\$ 565.69
354-351-10	\$ 565.69
354-351-11	\$ 565.69
354-352-01	\$ 565.69
354-352-02	\$ 565.69
354-352-03	\$ 565.69
354-352-04	\$ 565.69
354-352-05	\$ 565.69
354-352-06	\$ 565.69
354-352-07	\$ 565.69
354-352-08	\$ 565.69
354-352-09	\$ 565.69
354-352-10	\$ 565.69
354-352-11	\$ 565.69
354-352-12	\$ 565.69
354-352-13	\$ 565.69
354-352-14	\$ 565.69
354-352-15	\$ 565.69
354-361-01	\$ 332.83
354-361-02	\$ 332.83
354-361-03	\$ 332.83
354-361-04	\$ 332.83
354-361-05	\$ 332.83
354-361-06	\$ 332.83
354-361-07	\$ 332.83
354-361-08	\$ 332.83
354-361-09	\$ 332.83
354-361-10	\$ 332.83
354-361-11	\$ 332.83
354-361-12	\$ 332.83
354-361-13	\$ 332.83
354-361-14	\$ 332.83
354-361-15	\$ 332.83
354-361-16	\$ 332.83
354-361-17	\$ 332.83
354-361-18	\$ 332.83
354-361-19	\$ 332.83
354-361-20	\$ 332.83
354-361-21	\$ 332.83
354-361-22	\$ 332.83
354-361-23	\$ 332.83
354-361-24	\$ 332.83
354-362-01	\$ 332.83
354-362-02	\$ 332.83
354-362-03	\$ 332.83

**City of Anaheim**  
**Community Facilities District No. 1989-3**  
**The Summit**  
**Special Tax Levy for Fiscal Year 2011-12**

<u>Assessor's Parcel Number</u>	<u>FY 2011-12 Special Tax</u>
354-362-04	\$ 332.83
354-362-05	\$ 332.83
354-362-06	\$ 332.83
354-362-07	\$ 332.83
354-362-08	\$ 332.83
354-362-09	\$ 332.83
354-362-10	\$ 332.83
354-362-11	\$ 332.83
354-362-12	\$ 332.83
354-362-13	\$ 332.83
354-362-14	\$ 332.83
354-362-15	\$ 332.83
354-362-16	\$ 332.83
354-362-17	\$ 332.83
354-362-18	\$ 332.83
354-362-19	\$ 332.83
354-362-20	\$ 332.83
354-362-21	\$ 332.83
354-362-22	\$ 332.83
354-362-23	\$ 332.83
354-362-24	\$ 332.83
354-362-25	\$ 332.83
354-362-26	\$ 332.83
354-362-27	\$ 332.83
354-362-28	\$ 332.83
354-391-01	\$ 565.69
354-391-02	\$ 565.69
354-391-03	\$ 565.69
354-391-04	\$ 565.69
354-391-05	\$ 565.69
354-391-06	\$ 565.69
354-392-01	\$ 565.69
354-392-02	\$ 565.69
354-392-03	\$ 565.69
354-392-04	\$ 565.69
354-392-05	\$ 565.69
354-392-06	\$ 565.69
354-392-07	\$ 565.69
354-392-08	\$ 565.69
354-392-09	\$ 565.69
354-392-10	\$ 565.69
354-392-11	\$ 565.69
354-392-12	\$ 565.69
354-392-13	\$ 565.69
354-392-14	\$ 565.69
354-392-15	\$ 565.69
354-392-16	\$ 565.69
354-392-17	\$ 565.69
354-392-18	\$ 565.69
354-392-19	\$ 565.69
354-393-01	\$ 565.69
354-393-02	\$ 565.69
354-393-03	\$ 565.69
354-393-04	\$ 565.69

**City of Anaheim**  
**Community Facilities District No. 1989-3**  
**The Summit**  
**Special Tax Levy for Fiscal Year 2011-12**

<u>Assessor's Parcel Number</u>	<u>FY 2011-12 Special Tax</u>
354-393-05	\$ 565.69
354-393-06	\$ 565.69
354-393-07	\$ 565.69
354-393-08	\$ 565.69
354-393-09	\$ 565.69
354-393-10	\$ 565.69
354-393-11	\$ 565.69
354-393-12	\$ 565.69
354-393-13	\$ 565.69
354-393-14	\$ 565.69
354-393-15	\$ 565.69
354-393-16	\$ 565.69
354-393-21	\$ 565.69
354-393-22	\$ 565.69
354-393-23	\$ 565.69
354-393-24	\$ 565.69
354-393-25	\$ 565.69
354-393-26	\$ 565.69
354-393-27	\$ 565.69
354-393-28	\$ 565.69
354-393-29	\$ 565.69
354-393-31	\$ 565.69
354-393-32	\$ 565.69
354-393-33	\$ 565.69
354-393-34	\$ 565.69
354-393-35	\$ 565.69
354-393-36	\$ 565.69
354-393-37	\$ 565.69
354-393-38	\$ 565.69
354-393-39	\$ 565.69
354-393-40	\$ 565.69
354-393-41	\$ 565.69
354-393-42	\$ 565.69
354-393-43	\$ 565.69
354-393-44	\$ 565.69
354-393-45	\$ 565.69
354-393-46	\$ 565.69
354-393-47	\$ 565.69
354-401-01	\$ 732.10
354-401-02	\$ 732.10
354-401-03	\$ 732.10
354-401-04	\$ 732.10
354-401-05	\$ 732.10
354-401-06	\$ 732.10
354-401-07	\$ 732.10
354-401-08	\$ 732.10
354-401-09	\$ 732.10
354-401-10	\$ 732.10
354-401-11	\$ 732.10
354-401-12	\$ 732.10
354-401-15	\$ 732.10
354-401-16	\$ 732.10
354-401-17	\$ 732.10
354-401-18	\$ 732.10

**City of Anaheim**  
**Community Facilities District No. 1989-3**  
**The Summit**  
**Special Tax Levy for Fiscal Year 2011-12**

<u>Assessor's Parcel Number</u>	<u>FY 2011-12 Special Tax</u>
354-401-19	\$ 732.10
354-401-20	\$ 732.10
354-401-21	\$ 732.10
354-401-22	\$ 732.10
354-401-23	\$ 732.10
354-401-24	\$ 732.10
354-401-25	\$ 732.10
354-401-26	\$ 732.10
354-401-27	\$ 732.10
354-401-28	\$ 732.10
354-401-29	\$ 732.10
354-401-30	\$ 732.10
354-401-31	\$ 732.10
354-401-32	\$ 732.10
354-402-01	\$ 732.10
354-402-02	\$ 732.10
354-402-03	\$ 732.10
354-402-04	\$ 732.10
354-402-05	\$ 732.10
354-403-01	\$ 732.10
354-403-02	\$ 732.10
354-403-03	\$ 732.10
354-403-04	\$ 732.10
354-403-05	\$ 732.10
354-403-06	\$ 732.10
354-403-07	\$ 732.10
354-403-08	\$ 732.10
354-403-09	\$ 732.10
354-403-10	\$ 732.10
354-403-11	\$ 732.10
354-403-12	\$ 732.10
354-403-13	\$ 732.10
354-403-14	\$ 732.10
354-403-15	\$ 732.10
354-403-16	\$ 732.10
354-403-17	\$ 732.10
354-471-02	\$ 565.69
354-471-03	\$ 332.83
354-471-04	\$ 332.83
354-471-05	\$ 565.69
354-471-06	\$ 332.83
354-471-07	\$ 332.83
354-471-08	\$ 332.83
354-471-09	\$ 332.83
354-471-10	\$ 332.83
354-471-11	\$ 332.83
354-471-12	\$ 332.83
354-471-13	\$ 332.83
354-471-14	\$ 565.69
354-471-15	\$ 332.83
354-471-16	\$ 332.83
354-471-17	\$ 565.69
354-471-18	\$ 332.83
354-471-19	\$ 332.83

**City of Anaheim**  
**Community Facilities District No. 1989-3**  
**The Summit**  
**Special Tax Levy for Fiscal Year 2011-12**

<u>Assessor's Parcel Number</u>	<u>FY 2011-12 Special Tax</u>
354-471-20	\$ 565.69
354-471-21	\$ 332.83
354-471-22	\$ 332.83
354-471-23	\$ 565.69
354-471-24	\$ 332.83
354-471-25	\$ 565.69
354-471-26	\$ 332.83
354-471-27	\$ 565.69
354-471-28	\$ 332.83
354-471-29	\$ 332.83
354-471-32	\$ 565.69
354-471-33	\$ 332.83
354-471-34	\$ 332.83
354-471-35	\$ 332.83
354-471-36	\$ 565.69
354-471-37	\$ 332.83
354-471-38	\$ 565.69
354-471-39	\$ 332.83
354-471-40	\$ 565.69
354-471-41	\$ 332.83
354-471-42	\$ 332.83
354-471-43	\$ 565.69
354-471-44	\$ 332.83
354-471-45	\$ 332.83
354-471-46	\$ 565.69
354-471-47	\$ 332.83
354-471-48	\$ 565.69
354-471-49	\$ 332.83
354-471-50	\$ 332.83
354-471-51	\$ 565.69
354-471-52	\$ 332.83
354-471-53	\$ 332.83
354-471-54	\$ 565.69
354-471-55	\$ 332.83
354-471-56	\$ 565.69
354-471-57	\$ 332.83
354-471-58	\$ 565.69
354-472-02	\$ 565.69
354-472-03	\$ 332.83
354-472-04	\$ 332.83
354-472-05	\$ 332.83
354-472-06	\$ 332.83
354-472-07	\$ 565.69
354-472-08	\$ 332.83
354-472-09	\$ 565.69
354-472-10	\$ 332.83
354-472-11	\$ 332.83
354-472-12	\$ 565.69
354-472-13	\$ 332.83
354-472-14	\$ 565.69
354-472-15	\$ 332.83
354-473-02	\$ 332.83
354-473-03	\$ 332.83
354-473-04	\$ 565.69

**City of Anaheim**  
**Community Facilities District No. 1989-3**  
**The Summit**  
**Special Tax Levy for Fiscal Year 2011-12**

<u>Assessor's Parcel Number</u>	<u>FY 2011-12 Special Tax</u>
354-473-05	\$ 332.83
354-473-06	\$ 565.69
354-473-07	\$ 332.83
354-473-08	\$ 565.69
354-473-09	\$ 332.83
354-473-10	\$ 565.69
354-473-11	\$ 332.83
354-473-12	\$ 332.83
354-473-13	\$ 332.83
354-473-14	\$ 565.69
354-473-15	\$ 332.83
354-473-16	\$ 565.69
354-473-17	\$ 332.83
354-473-18	\$ 565.69
354-473-19	\$ 332.83
354-473-20	\$ 332.83
354-473-21	\$ 565.69
354-473-22	\$ 332.83
354-473-23	\$ 332.83
354-473-24	\$ 565.69
354-473-25	\$ 332.83
354-473-26	\$ 565.69
354-473-27	\$ 332.83
354-473-28	\$ 332.83
354-473-29	\$ 565.69
354-473-30	\$ 332.83
354-531-01	\$ 332.83
354-531-02	\$ 332.83
354-531-03	\$ 332.83
354-531-04	\$ 332.83
354-531-05	\$ 332.83
354-531-06	\$ 332.83
354-531-07	\$ 332.83
354-531-08	\$ 332.83
354-531-09	\$ 332.83
354-531-10	\$ 332.83
354-531-11	\$ 332.83
354-531-12	\$ 332.83
354-531-13	\$ 332.83
354-531-14	\$ 332.83
354-531-15	\$ 332.83
354-531-16	\$ 332.83
354-531-17	\$ 332.83
354-531-18	\$ 332.83
354-531-19	\$ 332.83
354-531-20	\$ 332.83
354-531-21	\$ 332.83
354-532-01	\$ 332.83
354-532-02	\$ 332.83
354-532-03	\$ 332.83
354-532-04	\$ 332.83
354-532-05	\$ 332.83
354-532-06	\$ 332.83
354-532-07	\$ 332.83

**City of Anaheim**  
**Community Facilities District No. 1989-3**  
**The Summit**  
**Special Tax Levy for Fiscal Year 2011-12**

<u>Assessor's Parcel Number</u>	<u>FY 2011-12 Special Tax</u>
354-532-08	\$ 332.83
354-532-09	\$ 332.83
354-532-10	\$ 332.83
354-532-11	\$ 332.83
354-532-12	\$ 332.83
354-532-13	\$ 332.83
354-532-14	\$ 332.83
354-532-15	\$ 332.83
354-532-16	\$ 332.83
354-532-17	\$ 332.83
354-532-18	\$ 332.83
354-532-19	\$ 332.83
354-532-20	\$ 332.83
354-532-21	\$ 332.83
354-532-23	\$ 732.10
354-532-24	\$ 732.10
354-532-25	\$ 732.10
354-532-26	\$ 732.10
354-532-27	\$ 732.10
354-532-28	\$ 732.10
354-532-29	\$ 732.10
354-532-30	\$ 732.10
354-532-31	\$ 732.10
354-532-32	\$ 732.10
354-532-33	\$ 732.10
354-532-34	\$ 732.10
354-541-01	\$ 332.83
354-541-02	\$ 332.83
354-541-03	\$ 332.83
354-541-04	\$ 332.83
354-541-05	\$ 332.83
354-541-06	\$ 332.83
354-541-07	\$ 332.83
354-541-08	\$ 332.83
354-541-09	\$ 332.83
354-541-10	\$ 332.83
354-541-11	\$ 332.83
354-541-12	\$ 332.83
354-541-13	\$ 332.83
354-541-14	\$ 332.83
354-541-15	\$ 332.83
354-541-16	\$ 332.83
354-541-17	\$ 332.83
354-541-18	\$ 332.83
354-542-01	\$ 332.83
354-542-02	\$ 332.83
354-542-03	\$ 332.83
354-542-04	\$ 332.83
354-542-05	\$ 332.83
354-542-06	\$ 332.83
354-542-07	\$ 332.83
354-542-08	\$ 332.83
354-542-09	\$ 332.83
354-542-10	\$ 332.83

**City of Anaheim**  
**Community Facilities District No. 1989-3**  
**The Summit**  
**Special Tax Levy for Fiscal Year 2011-12**

<u>Assessor's Parcel Number</u>	<u>FY 2011-12 Special Tax</u>
354-542-11	\$ 332.83
354-542-12	\$ 332.83
354-542-13	\$ 332.83
354-542-14	\$ 332.83
354-542-15	\$ 332.83
354-542-16	\$ 332.83
354-542-17	\$ 332.83
354-542-18	\$ 332.83
354-542-19	\$ 332.83
354-542-20	\$ 332.83
354-542-22	\$ 565.69
354-542-23	\$ 565.69
354-542-24	\$ 565.69
354-542-25	\$ 565.69
354-542-26	\$ 565.69
354-542-27	\$ 565.69
354-542-28	\$ 565.69
354-542-29	\$ 565.69
354-542-30	\$ 565.69
354-542-31	\$ 565.69
354-542-32	\$ 732.10
354-542-33	\$ 732.10
354-542-34	\$ 732.10
354-542-35	\$ 732.10
354-542-36	\$ 732.10
354-542-37	\$ 732.10
354-542-38	\$ 732.10
354-542-39	\$ 732.10
354-542-40	\$ 732.10
354-551-01	\$ 565.69
354-551-02	\$ 565.69
354-551-03	\$ 565.69
354-551-04	\$ 332.83
354-551-05	\$ 565.69
354-551-06	\$ 565.69
354-551-07	\$ 565.69
354-551-08	\$ 565.69
354-551-09	\$ 332.83
354-551-10	\$ 565.69
354-551-11	\$ 565.69
354-551-12	\$ 332.83
354-551-13	\$ 565.69
354-551-14	\$ 565.69
354-551-16	\$ 565.69
354-551-17	\$ 332.83
354-551-19	\$ 565.69
354-552-01	\$ 565.69
354-552-02	\$ 565.69
354-552-03	\$ 565.69
354-552-04	\$ 332.83
354-552-05	\$ 565.69
354-552-06	\$ 332.83
354-552-07	\$ 565.69
354-552-08	\$ 565.69



**City of Anaheim**  
**Community Facilities District No. 1989-3**  
**The Summit**  
**Special Tax Levy for Fiscal Year 2011-12**

<u>Assessor's Parcel Number</u>	<u>FY 2011-12 Special Tax</u>
354-552-09	\$ 565.69
354-552-10	\$ 332.83
354-552-11	\$ 565.69
354-552-13	\$ 565.69
354-552-14	\$ 732.10
354-552-15	\$ 732.10
354-552-16	\$ 732.10
354-552-17	\$ 732.10
354-552-18	\$ 732.10
354-552-19	\$ 732.10
354-552-20	\$ 732.10
354-552-21	\$ 732.10
354-552-22	\$ 732.10
354-552-23	\$ 732.10
354-552-24	\$ 732.10
354-552-25	\$ 565.69
354-552-26	\$ 732.10
354-552-27	\$ 732.10
354-552-28	\$ 732.10
354-552-29	\$ 732.10
354-552-30	\$ 565.69
354-552-31	\$ 732.10
354-552-32	\$ 732.10
354-553-01	\$ 732.10
354-553-02	\$ 732.10
354-553-03	\$ 732.10
354-553-04	\$ 732.10
354-553-05	\$ 565.69
354-553-06	\$ 732.10
354-553-07	\$ 732.10
354-553-08	\$ 565.69
354-553-09	\$ 732.10
354-553-10	\$ 732.10
354-553-11	\$ 732.10
354-553-12	\$ 732.10
354-553-13	\$ 732.10
354-553-14	\$ 732.10
354-553-15	\$ 732.10
354-553-16	\$ 732.10
354-553-17	\$ 732.10
354-553-18	\$ 732.10
354-553-19	\$ 732.10
354-591-01	\$ 565.69
354-591-02	\$ 565.69
354-591-03	\$ 565.69
354-591-04	\$ 565.69
354-591-05	\$ 565.69
354-591-06	\$ 565.69
354-591-07	\$ 565.69
354-591-08	\$ 565.69
354-591-09	\$ 565.69
354-591-10	\$ 565.69
354-591-11	\$ 565.69
354-591-12	\$ 565.69

**City of Anaheim  
Community Facilities District No. 1989-3  
The Summit  
Special Tax Levy for Fiscal Year 2011-12**

<u>Assessor's Parcel Number</u>	<u>FY 2011-12 Special Tax</u>
354-591-16	\$ 732.10
354-591-17	\$ 732.10
354-591-18	\$ 732.10
354-591-19	\$ 732.10
354-591-20	\$ 732.10
354-591-21	\$ 732.10
354-591-22	\$ 732.10
354-591-23	\$ 732.10
354-591-24	\$ 732.10
354-591-25	\$ 732.10
354-591-26	\$ 732.10
354-591-28	\$ 732.10
354-591-29	\$ 732.10
354-591-30	\$ 732.10
354-591-31	\$ 732.10
354-591-32	\$ 732.10
354-591-33	\$ 732.10
354-591-34	\$ 732.10
354-612-01	\$ 732.10
354-612-02	\$ 732.10
354-612-03	\$ 732.10
354-612-04	\$ 732.10
354-612-05	\$ 732.10
354-612-06	\$ 732.10
354-612-07	\$ 732.10
354-612-08	\$ 732.10
354-612-09	\$ 732.10
354-612-10	\$ 732.10
354-612-11	\$ 732.10
354-612-12	\$ 732.10
354-612-13	\$ 732.10
354-612-14	\$ 732.10
354-612-15	\$ 732.10
354-612-16	\$ 732.10
354-612-17	\$ 732.10
354-612-18	\$ 732.10
354-612-19	\$ 732.10
354-612-20	\$ 732.10
354-612-21	\$ 732.10
354-612-22	\$ 732.10
354-612-23	\$ 732.10
354-612-24	\$ 732.10
354-612-25	\$ 732.10
354-612-26	\$ 732.10
354-612-27	\$ 732.10
354-612-28	\$ 732.10
354-612-29	\$ 732.10
354-612-30	\$ 732.10
354-621-01	\$ 732.10
354-621-02	\$ 732.10
354-621-03	\$ 732.10
354-621-04	\$ 732.10
354-621-05	\$ 732.10
354-621-06	\$ 732.10

**City of Anaheim**  
**Community Facilities District No. 1989-3**  
**The Summit**  
**Special Tax Levy for Fiscal Year 2011-12**

<u>Assessor's Parcel Number</u>	<u>FY 2011-12 Special Tax</u>
354-621-07	\$ 732.10
354-621-08	\$ 732.10
354-621-09	\$ 732.10
354-621-10	\$ 732.10
354-621-11	\$ 732.10
354-621-12	\$ 732.10
354-621-13	\$ 732.10
354-621-14	\$ 732.10
354-621-15	\$ 732.10
354-621-16	\$ 732.10
354-621-17	\$ 732.10
354-621-18	\$ 732.10
354-621-19	\$ 732.10
354-621-20	\$ 732.10
354-621-21	\$ 732.10
354-621-22	\$ 732.10
354-621-23	\$ 732.10
354-621-24	\$ 732.10
354-621-25	\$ 732.10
354-621-26	\$ 732.10
354-621-28	\$ 732.10
354-631-01	\$ 732.10
354-631-02	\$ 732.10
354-631-03	\$ 732.10
354-631-04	\$ 732.10
354-631-05	\$ 732.10
354-631-06	\$ 732.10
354-631-07	\$ 732.10
354-631-08	\$ 732.10
354-631-09	\$ 732.10
354-631-10	\$ 732.10
354-631-11	\$ 732.10
354-631-12	\$ 732.10
354-631-13	\$ 732.10
354-631-14	\$ 732.10
354-631-15	\$ 732.10
354-631-16	\$ 732.10
354-631-17	\$ 732.10
354-631-18	\$ 732.10
354-631-19	\$ 732.10
354-631-20	\$ 732.10
354-631-21	\$ 732.10
354-631-22	\$ 732.10
354-631-23	\$ 732.10
354-631-24	\$ 732.10
354-641-01	\$ 332.83
354-641-02	\$ 332.83
354-641-03	\$ 332.83
354-641-04	\$ 332.83
354-641-05	\$ 332.83
354-641-06	\$ 332.83
354-641-07	\$ 332.83
354-641-08	\$ 332.83
354-641-09	\$ 332.83

**City of Anaheim**  
**Community Facilities District No. 1989-3**  
**The Summit**  
**Special Tax Levy for Fiscal Year 2011-12**

<u>Assessor's Parcel Number</u>	<u>FY 2011-12 Special Tax</u>
354-641-10	\$ 332.83
354-641-11	\$ 332.83
354-641-12	\$ 332.83
354-641-13	\$ 332.83
354-641-14	\$ 332.83
354-641-15	\$ 332.83
354-641-16	\$ 332.83
354-641-17	\$ 332.83
354-641-18	\$ 332.83
354-641-19	\$ 332.83
354-641-20	\$ 332.83
354-641-21	\$ 332.83
354-641-22	\$ 332.83
514-021-01	\$ 565.69
514-021-02	\$ 565.69
514-021-03	\$ 565.69
514-021-04	\$ 565.69
514-021-05	\$ 565.69
514-021-06	\$ 565.69
514-021-07	\$ 565.69
514-021-08	\$ 565.69
514-021-09	\$ 565.69
514-021-10	\$ 565.69
514-021-11	\$ 565.69
514-021-12	\$ 565.69
514-021-13	\$ 565.69
514-021-14	\$ 565.69
514-021-15	\$ 565.69
514-021-16	\$ 565.69
514-021-17	\$ 565.69
514-021-18	\$ 565.69
514-021-19	\$ 565.69
514-021-20	\$ 565.69
514-021-21	\$ 565.69
514-022-01	\$ 565.69
514-022-02	\$ 565.69
514-022-03	\$ 565.69
514-022-04	\$ 565.69
514-022-05	\$ 565.69
514-022-06	\$ 565.69
514-022-07	\$ 565.69
514-022-08	\$ 565.69
514-022-09	\$ 565.69
514-022-10	\$ 565.69
514-022-11	\$ 565.69
514-022-12	\$ 565.69
514-022-13	\$ 565.69
514-022-14	\$ 565.69
514-022-15	\$ 565.69
514-022-16	\$ 565.69
514-022-17	\$ 565.69
514-022-18	\$ 565.69
514-022-19	\$ 565.69
514-022-20	\$ 565.69

**City of Anaheim**  
**Community Facilities District No. 1989-3**  
**The Summit**  
**Special Tax Levy for Fiscal Year 2011-12**

<u>Assessor's Parcel Number</u>	<u>FY 2011-12 Special Tax</u>
514-022-21	\$ 565.69
514-022-22	\$ 565.69
514-022-23	\$ 565.69
514-022-24	\$ 565.69
514-022-25	\$ 565.69
514-022-26	\$ 565.69
514-022-27	\$ 565.69
514-022-28	\$ 565.69
514-031-02	\$ 565.69
514-031-03	\$ 565.69
514-031-04	\$ 565.69
514-031-05	\$ 565.69
514-031-06	\$ 565.69
514-031-07	\$ 565.69
514-031-08	\$ 565.69
514-031-09	\$ 565.69
514-031-10	\$ 565.69
514-031-11	\$ 565.69
514-031-12	\$ 565.69
514-031-13	\$ 565.69
514-031-14	\$ 565.69
514-031-15	\$ 565.69
514-031-16	\$ 565.69
514-031-17	\$ 565.69
514-031-19	\$ 565.69
514-031-20	\$ 565.69
514-031-21	\$ 565.69
514-031-22	\$ 565.69
514-031-23	\$ 565.69
514-031-24	\$ 565.69
514-031-25	\$ 565.69
514-031-26	\$ 565.69
514-031-27	\$ 565.69
514-031-28	\$ 565.69
514-031-29	\$ 565.69
514-031-30	\$ 565.69
514-031-31	\$ 565.69
514-031-32	\$ 565.69
514-031-33	\$ 565.69
514-031-34	\$ 565.69
514-031-35	\$ 565.69
514-031-36	\$ 565.69
514-031-37	\$ 565.69
514-031-38	\$ 565.69
514-031-39	\$ 565.69
514-031-40	\$ 565.69
514-032-02	\$ 565.69
514-032-03	\$ 565.69
514-032-04	\$ 565.69
514-032-05	\$ 565.69
514-032-06	\$ 565.69
514-032-07	\$ 565.69
514-032-08	\$ 565.69
514-032-09	\$ 565.69

**City of Anaheim  
Community Facilities District No. 1989-3  
The Summit  
Special Tax Levy for Fiscal Year 2011-12**

<u>Assessor's Parcel Number</u>	<u>FY 2011-12 Special Tax</u>
514-032-10	\$ 565.69
514-032-11	\$ 565.69
514-032-12	\$ 565.69
514-033-01	\$ 565.69
514-033-02	\$ 565.69
514-033-03	\$ 565.69
514-033-04	\$ 565.69
514-033-05	\$ 565.69
514-033-06	\$ 565.69
514-033-07	\$ 565.69
514-033-08	\$ 565.69
514-033-09	\$ 565.69
514-033-10	\$ 565.69
514-033-11	\$ 565.69
514-033-12	\$ 565.69
514-033-13	\$ 565.69
514-033-14	\$ 565.69
514-034-01	\$ 565.69
514-034-02	\$ 565.69
514-034-03	\$ 565.69
514-034-04	\$ 565.69
514-041-01	\$ 565.69
514-041-02	\$ 565.69
514-041-03	\$ 565.69
514-041-04	\$ 565.69
514-041-05	\$ 565.69
514-041-06	\$ 565.69
514-041-07	\$ 565.69
514-041-08	\$ 565.69
514-041-09	\$ 565.69
514-041-10	\$ 565.69
514-041-11	\$ 565.69
514-041-12	\$ 565.69
514-041-13	\$ 565.69
514-041-14	\$ 565.69
514-041-15	\$ 565.69
514-041-16	\$ 565.69
514-041-17	\$ 565.69
514-041-18	\$ 565.69
514-041-19	\$ 565.69
514-041-20	\$ 565.69
514-041-21	\$ 565.69
514-041-22	\$ 565.69
514-041-23	\$ 565.69
514-041-24	\$ 565.69
514-041-25	\$ 565.69
514-041-27	\$ 565.69
514-041-28	\$ 565.69
514-041-29	\$ 565.69
514-041-30	\$ 565.69
514-041-31	\$ 565.69
514-041-32	\$ 565.69
514-041-33	\$ 565.69
514-041-34	\$ 565.69

**City of Anaheim**  
**Community Facilities District No. 1989-3**  
**The Summit**  
**Special Tax Levy for Fiscal Year 2011-12**

<u>Assessor's Parcel Number</u>	<u>FY 2011-12 Special Tax</u>
514-041-35	\$ 565.69
514-041-36	\$ 565.69
514-042-01	\$ 565.69
514-042-02	\$ 565.69
514-042-03	\$ 565.69
514-042-04	\$ 565.69
514-042-05	\$ 565.69
514-042-06	\$ 565.69
514-042-07	\$ 565.69
514-042-08	\$ 565.69
514-042-09	\$ 565.69
514-042-10	\$ 565.69
514-042-11	\$ 565.69
514-042-12	\$ 565.69
514-042-13	\$ 565.69
514-042-14	\$ 565.69
514-042-15	\$ 565.69
514-042-16	\$ 565.69
514-042-17	\$ 565.69
514-042-18	\$ 565.69
514-042-19	\$ 565.69
514-051-01	\$ 565.69
514-051-02	\$ 565.69
514-051-03	\$ 565.69
514-051-04	\$ 565.69
514-051-05	\$ 565.69
514-051-06	\$ 565.69
514-051-08	\$ 565.69
514-051-09	\$ 565.69
514-051-10	\$ 565.69
514-051-11	\$ 565.69
514-051-12	\$ 565.69
514-051-13	\$ 565.69
514-051-14	\$ 565.69
514-051-15	\$ 565.69
514-052-01	\$ 565.69
514-052-02	\$ 565.69
514-052-03	\$ 565.69
514-052-04	\$ 565.69
514-052-05	\$ 565.69
514-052-06	\$ 565.69
514-052-07	\$ 565.69
514-052-08	\$ 565.69
514-052-09	\$ 565.69
514-052-10	\$ 565.69
514-052-11	\$ 565.69
514-052-12	\$ 565.69
514-052-13	\$ 565.69
514-052-15	\$ 565.69
514-052-16	\$ 565.69
514-052-17	\$ 565.69
514-052-18	\$ 565.69
514-052-19	\$ 565.69
514-052-20	\$ 565.69

**City of Anaheim**  
**Community Facilities District No. 1989-3**  
**The Summit**  
**Special Tax Levy for Fiscal Year 2011-12**

<u>Assessor's Parcel Number</u>	<u>FY 2011-12 Special Tax</u>
514-052-21	\$ 565.69
514-052-22	\$ 565.69
514-052-23	\$ 565.69
514-052-24	\$ 565.69
514-052-25	\$ 565.69
514-053-01	\$ 565.69
514-053-02	\$ 565.69
514-053-03	\$ 565.69
514-053-04	\$ 565.69
514-053-05	\$ 565.69
514-053-06	\$ 565.69
514-053-07	\$ 565.69
514-053-08	\$ 565.69
514-053-09	\$ 565.69
514-053-10	\$ 565.69
514-053-11	\$ 565.69
514-053-12	\$ 565.69
514-053-13	\$ 565.69
514-053-14	\$ 565.69
514-053-15	\$ 565.69
514-053-16	\$ 565.69
514-053-17	\$ 565.69
514-053-18	\$ 565.69
514-053-19	\$ 565.69
514-053-20	\$ 565.69
514-053-21	\$ 565.69
514-053-22	\$ 565.69
514-053-23	\$ 565.69
514-053-24	\$ 565.69
514-053-25	\$ 565.69
514-053-26	\$ 565.69
514-053-27	\$ 565.69
514-053-28	\$ 565.69
514-053-29	\$ 565.69
514-053-30	\$ 565.69
514-053-31	\$ 565.69
514-053-32	\$ 565.69
514-053-33	\$ 565.69
514-053-34	\$ 565.69
514-053-35	\$ 565.69
514-053-36	\$ 565.69
514-053-37	\$ 565.69
514-053-38	\$ 565.69
514-061-01	\$ 565.69
514-061-02	\$ 565.69
514-061-03	\$ 565.69
514-061-04	\$ 565.69
514-061-05	\$ 565.69
514-061-06	\$ 565.69
514-061-07	\$ 565.69
514-061-08	\$ 565.69
514-061-09	\$ 565.69
514-061-10	\$ 565.69
514-061-11	\$ 565.69



**City of Anaheim  
Community Facilities District No. 1989-3  
The Summit  
Special Tax Levy for Fiscal Year 2011-12**

<u>Assessor's Parcel Number</u>	<u>FY 2011-12 Special Tax</u>
514-061-12	\$ 565.69
514-061-13	\$ 565.69
514-061-14	\$ 565.69
514-061-15	\$ 565.69
514-061-16	\$ 565.69
514-061-17	\$ 565.69
514-061-18	\$ 565.69
514-061-19	\$ 565.69
514-061-20	\$ 565.69
514-061-21	\$ 565.69
514-061-22	\$ 565.69
514-061-23	\$ 565.69
514-061-24	\$ 565.69
514-061-25	\$ 565.69
514-061-26	\$ 565.69
514-061-27	\$ 565.69
514-061-28	\$ 565.69
514-061-29	\$ 565.69
514-061-30	\$ 565.69
514-061-31	\$ 565.69
514-061-32	\$ 565.69
514-061-33	\$ 565.69
514-061-34	\$ 565.69
514-061-35	\$ 565.69
514-061-38	\$ 565.69
514-061-39	\$ 565.69
514-061-40	\$ 565.69
514-061-41	\$ 565.69
514-061-42	\$ 565.69
514-061-43	\$ 565.69
514-061-44	\$ 565.69
514-061-45	\$ 565.69
514-061-46	\$ 565.69
514-061-47	\$ 565.69
514-061-48	\$ 565.69
514-061-49	\$ 565.69
514-061-50	\$ 565.69
514-061-51	\$ 565.69
514-061-52	\$ 565.69
514-061-53	\$ 565.69
514-061-54	\$ 565.69
514-061-55	\$ 565.69
514-061-56	\$ 565.69
514-061-57	\$ 565.69
514-061-58	\$ 565.69
514-061-59	\$ 565.69
514-061-60	\$ 565.69
514-061-61	\$ 565.69
514-061-62	\$ 565.69
514-061-63	\$ 565.69
514-061-64	\$ 565.69
514-061-65	\$ 565.69
514-061-66	\$ 565.69
514-061-67	\$ 565.69

**City of Anaheim**  
**Community Facilities District No. 1989-3**  
**The Summit**  
**Special Tax Levy for Fiscal Year 2011-12**

<u>Assessor's Parcel Number</u>	<u>FY 2011-12 Special Tax</u>
514-061-68	\$ 565.69
514-061-69	\$ 565.69
514-061-70	\$ 565.69
514-061-71	\$ 565.69
514-061-72	\$ 565.69
514-071-01	\$ 565.69
514-071-02	\$ 565.69
514-071-03	\$ 565.69
514-071-04	\$ 565.69
514-071-05	\$ 565.69
514-071-06	\$ 565.69
514-071-07	\$ 565.69
514-071-08	\$ 565.69
514-071-09	\$ 565.69
514-071-10	\$ 565.69
514-071-11	\$ 565.69
514-071-12	\$ 565.69
514-071-13	\$ 565.69
514-071-14	\$ 565.69
514-071-15	\$ 565.69
514-071-16	\$ 565.69
514-071-17	\$ 565.69
514-071-18	\$ 565.69
514-071-19	\$ 565.69
514-071-20	\$ 565.69
514-071-21	\$ 565.69
514-071-22	\$ 565.69
514-071-23	\$ 565.69
514-071-24	\$ 565.69
514-071-25	\$ 565.69
514-071-26	\$ 565.69
514-071-27	\$ 565.69
514-071-28	\$ 565.69
514-071-29	\$ 565.69
514-071-30	\$ 565.69
514-071-34	\$ 565.69
514-071-35	\$ 565.69
514-071-36	\$ 565.69
514-071-37	\$ 565.69
514-071-38	\$ 565.69
514-071-39	\$ 565.69
514-071-40	\$ 565.69
514-071-41	\$ 565.69
514-071-42	\$ 565.69
514-071-43	\$ 565.69
514-071-44	\$ 565.69
514-071-45	\$ 565.69
514-071-46	\$ 565.69
514-071-47	\$ 565.69
514-071-48	\$ 565.69
514-071-49	\$ 565.69
514-071-50	\$ 565.69
514-071-51	\$ 565.69
514-071-52	\$ 565.69

**City of Anaheim**  
**Community Facilities District No. 1989-3**  
**The Summit**  
**Special Tax Levy for Fiscal Year 2011-12**

<u>Assessor's Parcel Number</u>	<u>FY 2011-12 Special Tax</u>
514-071-53	\$ 565.69
514-071-54	\$ 565.69
514-071-55	\$ 565.69
514-071-56	\$ 565.69
514-071-57	\$ 565.69
514-071-58	\$ 565.69
514-071-59	\$ 565.69
514-081-02	\$ 565.69
514-081-03	\$ 565.69
514-081-04	\$ 565.69
514-081-05	\$ 565.69
514-081-06	\$ 565.69
514-081-07	\$ 565.69
514-081-08	\$ 565.69
514-081-09	\$ 565.69
514-081-10	\$ 565.69
514-081-11	\$ 565.69
514-081-12	\$ 565.69
514-081-13	\$ 565.69
514-081-14	\$ 565.69
514-081-15	\$ 565.69
514-081-16	\$ 565.69
514-081-17	\$ 565.69
514-081-18	\$ 565.69
514-081-19	\$ 565.69
514-081-20	\$ 565.69
514-081-21	\$ 565.69
514-081-22	\$ 565.69
514-081-23	\$ 565.69
514-081-24	\$ 565.69
514-081-25	\$ 565.69
514-081-26	\$ 565.69
514-081-27	\$ 565.69
514-081-28	\$ 565.69
514-081-29	\$ 565.69
514-081-30	\$ 565.69
514-081-31	\$ 565.69
514-091-01	\$ 565.69
514-091-02	\$ 565.69
514-091-03	\$ 565.69
514-091-04	\$ 565.69
514-091-05	\$ 565.69
514-091-06	\$ 565.69
514-091-07	\$ 565.69
514-091-08	\$ 565.69
514-091-09	\$ 565.69
514-091-10	\$ 565.69
514-091-11	\$ 565.69
514-091-12	\$ 565.69
514-091-13	\$ 565.69
514-091-14	\$ 565.69
514-091-15	\$ 565.69
514-091-16	\$ 565.69
514-091-17	\$ 565.69

**City of Anaheim**  
**Community Facilities District No. 1989-3**  
**The Summit**  
**Special Tax Levy for Fiscal Year 2011-12**

<u>Assessor's Parcel Number</u>	<u>FY 2011-12 Special Tax</u>
514-091-18	\$ 565.69
514-091-19	\$ 565.69
514-091-20	\$ 565.69
514-091-21	\$ 565.69
514-091-22	\$ 565.69
514-091-23	\$ 565.69
514-091-24	\$ 565.69
514-101-01	\$ 565.69
514-101-02	\$ 565.69
514-101-03	\$ 565.69
514-101-04	\$ 565.69
514-101-05	\$ 565.69
514-101-06	\$ 565.69
514-101-07	\$ 565.69
514-101-08	\$ 565.69
514-101-09	\$ 565.69
514-101-10	\$ 565.69
514-101-11	\$ 565.69
514-101-13	\$ 565.69
514-101-14	\$ 565.69
514-101-15	\$ 565.69
514-101-16	\$ 565.69
514-101-17	\$ 565.69
514-101-18	\$ 565.69
514-101-19	\$ 565.69
514-101-20	\$ 565.69
514-101-21	\$ 565.69
514-101-22	\$ 565.69
514-101-23	\$ 565.69
514-101-24	\$ 565.69
514-101-25	\$ 565.69
930-264-21	\$ 232.86
930-264-22	\$ 232.86
930-264-23	\$ 232.86
930-264-24	\$ 232.86
930-264-25	\$ 232.86
930-264-26	\$ 232.86
930-264-27	\$ 232.86
930-264-28	\$ 232.86
930-264-29	\$ 232.86
930-264-30	\$ 232.86
930-264-31	\$ 232.86
930-264-32	\$ 232.86
930-264-33	\$ 232.86
930-264-34	\$ 232.86
930-264-35	\$ 232.86
930-264-36	\$ 232.86
930-264-37	\$ 232.86
930-264-38	\$ 232.86
930-264-39	\$ 232.86
930-264-40	\$ 232.86
930-264-41	\$ 232.86
930-264-42	\$ 232.86
930-264-43	\$ 232.86

**City of Anaheim  
Community Facilities District No. 1989-3  
The Summit  
Special Tax Levy for Fiscal Year 2011-12**

<u>Assessor's Parcel Number</u>	<u>FY 2011-12 Special Tax</u>
930-264-44	\$ 232.86
930-264-45	\$ 232.86
930-264-46	\$ 232.86
930-264-47	\$ 232.86
930-264-48	\$ 232.86
930-264-49	\$ 232.86
930-264-50	\$ 232.86
930-264-51	\$ 232.86
930-264-52	\$ 232.86
930-264-53	\$ 232.86
930-264-54	\$ 232.86
930-264-55	\$ 232.86
930-264-56	\$ 232.86
930-264-57	\$ 232.86
930-264-58	\$ 232.86
930-264-59	\$ 232.86
930-264-60	\$ 232.86
930-264-61	\$ 232.86
930-264-62	\$ 232.86
930-264-63	\$ 232.86
930-264-64	\$ 232.86
930-264-65	\$ 232.86
930-264-66	\$ 232.86
930-264-67	\$ 232.86
930-264-68	\$ 232.86
930-264-69	\$ 232.86
930-264-70	\$ 232.86
930-264-71	\$ 232.86
930-264-72	\$ 232.86
930-264-73	\$ 232.86
930-264-74	\$ 232.86
930-264-75	\$ 232.86
930-264-76	\$ 232.86
930-264-77	\$ 232.86
930-264-78	\$ 232.86
930-264-79	\$ 232.86
930-264-80	\$ 232.86
930-264-81	\$ 232.86
930-264-82	\$ 232.86
930-264-83	\$ 232.86
930-264-84	\$ 232.86
930-264-85	\$ 232.86
930-264-86	\$ 232.86
930-264-87	\$ 232.86
930-264-88	\$ 232.86
930-264-89	\$ 232.86
930-264-90	\$ 232.86
930-264-91	\$ 232.86
930-264-92	\$ 232.86
930-264-93	\$ 232.86
930-264-94	\$ 232.86
930-264-95	\$ 232.86
930-264-96	\$ 232.86
930-264-97	\$ 232.86

**City of Anaheim  
Community Facilities District No. 1989-3  
The Summit  
Special Tax Levy for Fiscal Year 2011-12**

<u>Assessor's Parcel Number</u>	<u>FY 2011-12 Special Tax</u>
930-264-98	\$ 232.86
930-264-99	\$ 232.86
930-265-00	\$ 232.86
930-265-01	\$ 232.86
930-265-02	\$ 232.86
930-265-03	\$ 232.86
930-265-04	\$ 232.86
930-265-05	\$ 232.86
930-265-06	\$ 232.86
930-265-07	\$ 232.86
930-265-08	\$ 232.86
930-265-09	\$ 232.86
930-265-10	\$ 232.86
930-265-11	\$ 232.86
930-265-12	\$ 232.86
930-265-13	\$ 232.86
930-265-14	\$ 232.86
930-265-15	\$ 232.86
930-265-16	\$ 232.86
930-265-17	\$ 232.86
930-265-18	\$ 232.86
930-265-19	\$ 232.86
930-265-20	\$ 232.86
930-265-21	\$ 232.86
930-265-22	\$ 232.86
930-265-23	\$ 232.86
930-265-24	\$ 232.86
930-265-25	\$ 232.86
930-265-26	\$ 232.86
930-265-27	\$ 232.86
930-265-28	\$ 232.86
930-265-29	\$ 232.86
930-265-30	\$ 232.86
930-265-31	\$ 232.86
930-265-32	\$ 232.86
930-265-33	\$ 232.86
930-265-34	\$ 232.86
930-265-35	\$ 232.86
930-265-36	\$ 232.86
930-265-37	\$ 232.86
930-265-38	\$ 232.86
930-265-39	\$ 232.86
930-265-40	\$ 232.86
930-265-41	\$ 232.86
930-265-42	\$ 232.86
930-265-43	\$ 232.86
930-265-44	\$ 232.86
930-265-45	\$ 232.86
930-265-46	\$ 232.86
930-265-47	\$ 232.86
930-265-48	\$ 232.86
930-265-49	\$ 232.86
930-265-50	\$ 232.86
930-265-51	\$ 232.86

**City of Anaheim**  
**Community Facilities District No. 1989-3**  
**The Summit**  
**Special Tax Levy for Fiscal Year 2011-12**

<u>Assessor's Parcel Number</u>	<u>FY 2011-12 Special Tax</u>
930-265-52	\$ 232.86
930-265-53	\$ 232.86
930-265-54	\$ 232.86
930-265-55	\$ 232.86
930-265-56	\$ 232.86
930-265-57	\$ 232.86
930-265-58	\$ 232.86
930-265-59	\$ 232.86
930-265-60	\$ 232.86
930-265-61	\$ 232.86
930-265-62	\$ 232.86
930-265-63	\$ 232.86
930-265-64	\$ 232.86
930-265-65	\$ 232.86
930-265-66	\$ 232.86
930-265-67	\$ 232.86
930-265-68	\$ 232.86
930-265-69	\$ 232.86
930-265-70	\$ 232.86
930-265-71	\$ 232.86
930-265-72	\$ 232.86
930-265-73	\$ 232.86
930-265-74	\$ 232.86
930-265-75	\$ 232.86
930-265-76	\$ 232.86
930-265-77	\$ 232.86
930-265-78	\$ 232.86
930-265-79	\$ 232.86
930-265-80	\$ 232.86
930-265-81	\$ 232.86
930-265-82	\$ 232.86
930-265-83	\$ 232.86
930-265-84	\$ 232.86
930-265-85	\$ 232.86
930-265-86	\$ 232.86
930-265-87	\$ 232.86
930-265-88	\$ 232.86
930-265-89	\$ 232.86
930-265-90	\$ 232.86
930-265-91	\$ 232.86
930-265-92	\$ 232.86
930-265-93	\$ 232.86
930-265-94	\$ 232.86
930-265-95	\$ 232.86
930-265-96	\$ 232.86
930-265-97	\$ 232.86
930-265-98	\$ 232.86
930-265-99	\$ 232.86
930-266-00	\$ 232.86
930-266-01	\$ 232.86
930-266-02	\$ 232.86
930-266-03	\$ 232.86
930-266-04	\$ 232.86
930-266-05	\$ 232.86

**City of Anaheim**  
**Community Facilities District No. 1989-3**  
**The Summit**  
**Special Tax Levy for Fiscal Year 2011-12**

<u>Assessor's Parcel Number</u>	<u>FY 2011-12 Special Tax</u>
930-266-06	\$ 232.86
930-266-07	\$ 232.86
930-266-08	\$ 232.86
930-266-09	\$ 232.86
930-266-10	\$ 232.86
930-266-11	\$ 232.86
930-266-12	\$ 232.86
930-266-13	\$ 232.86
930-266-14	\$ 232.86
930-266-15	\$ 232.86
930-266-16	\$ 232.86
930-266-17	\$ 232.86
930-266-18	\$ 232.86
930-266-19	\$ 232.86
930-266-20	\$ 232.86
930-266-21	\$ 232.86
930-266-22	\$ 232.86
930-266-23	\$ 232.86
930-266-24	\$ 232.86
930-266-25	\$ 232.86
930-266-26	\$ 232.86
930-266-27	\$ 232.86
930-266-28	\$ 232.86
930-266-29	\$ 232.86
930-266-30	\$ 232.86
930-266-31	\$ 232.86
930-266-32	\$ 232.86
930-266-33	\$ 232.86
930-266-34	\$ 232.86
930-266-35	\$ 232.86
930-266-36	\$ 232.86
930-266-37	\$ 232.86
930-266-38	\$ 232.86
930-266-39	\$ 232.86
930-266-40	\$ 232.86
930-266-41	\$ 232.86
930-266-42	\$ 232.86
930-266-43	\$ 232.86
930-266-44	\$ 232.86
930-266-45	\$ 232.86
930-266-46	\$ 232.86
930-266-47	\$ 232.86
930-266-48	\$ 232.86
930-266-49	\$ 232.86
930-266-50	\$ 232.86
930-266-51	\$ 232.86
930-266-52	\$ 232.86
930-266-53	\$ 232.86
930-266-54	\$ 232.86
930-266-55	\$ 232.86
930-266-56	\$ 232.86
930-266-57	\$ 232.86
930-266-58	\$ 232.86
930-266-59	\$ 232.86



**City of Anaheim**  
**Community Facilities District No. 1989-3**  
**The Summit**  
**Special Tax Levy for Fiscal Year 2011-12**

<u>Assessor's Parcel Number</u>	<u>FY 2011-12 Special Tax</u>
930-266-60	\$ 232.86
930-266-61	\$ 232.86
930-266-62	\$ 232.86
930-266-63	\$ 232.86
930-394-01	\$ 232.86
930-394-02	\$ 232.86
930-394-03	\$ 232.86
930-394-04	\$ 232.86
930-394-05	\$ 232.86
930-394-06	\$ 232.86
930-394-07	\$ 232.86
930-394-08	\$ 232.86
930-394-09	\$ 232.86
930-394-10	\$ 232.86
930-394-11	\$ 232.86
930-394-12	\$ 232.86
930-394-13	\$ 232.86
930-394-14	\$ 232.86
930-394-15	\$ 232.86
930-394-16	\$ 232.86
930-394-17	\$ 232.86
930-394-18	\$ 232.86
930-394-19	\$ 232.86
930-394-20	\$ 232.86
930-394-21	\$ 232.86
930-394-22	\$ 232.86
930-394-23	\$ 232.86
930-394-24	\$ 232.86
930-394-25	\$ 232.86
930-394-26	\$ 232.86
930-394-27	\$ 232.86
930-394-28	\$ 232.86
930-394-29	\$ 232.86
930-394-30	\$ 232.86
930-394-31	\$ 232.86
930-394-32	\$ 232.86
930-394-33	\$ 232.86
930-394-34	\$ 232.86
930-394-35	\$ 232.86
930-394-36	\$ 232.86
930-394-37	\$ 232.86
930-394-38	\$ 232.86
930-394-39	\$ 232.86
930-394-40	\$ 232.86
930-394-41	\$ 232.86
930-394-42	\$ 232.86
930-394-43	\$ 232.86
930-394-44	\$ 232.86
930-394-45	\$ 232.86
930-394-46	\$ 232.86
930-394-47	\$ 232.86
930-394-48	\$ 232.86
930-394-49	\$ 232.86
930-394-50	\$ 232.86

**City of Anaheim**  
**Community Facilities District No. 1989-3**  
**The Summit**  
**Special Tax Levy for Fiscal Year 2011-12**

<u>Assessor's Parcel Number</u>	<u>FY 2011-12 Special Tax</u>
930-394-51	\$ 232.86
930-394-52	\$ 232.86
930-394-53	\$ 232.86
930-394-54	\$ 232.86
930-394-55	\$ 232.86
930-394-56	\$ 232.86
930-394-57	\$ 232.86
930-394-58	\$ 232.86
930-394-59	\$ 232.86
930-394-60	\$ 232.86
930-394-61	\$ 232.86
930-394-62	\$ 232.86
930-394-63	\$ 232.86
930-394-64	\$ 232.86
930-394-65	\$ 232.86
930-394-66	\$ 232.86
930-394-67	\$ 232.86
930-394-68	\$ 232.86
930-394-69	\$ 232.86
930-394-70	\$ 232.86
930-394-71	\$ 232.86
930-394-72	\$ 232.86
930-394-73	\$ 232.86
930-394-74	\$ 232.86
930-394-75	\$ 232.86
930-394-76	\$ 232.86
930-394-77	\$ 232.86
930-394-78	\$ 232.86
930-394-79	\$ 232.86
930-394-80	\$ 232.86
930-394-81	\$ 232.86
930-394-82	\$ 232.86
930-394-83	\$ 232.86
930-394-84	\$ 232.86
930-394-85	\$ 232.86
930-394-86	\$ 232.86
930-394-87	\$ 232.86
930-394-88	\$ 232.86
930-394-89	\$ 232.86
930-394-90	\$ 232.86
930-394-91	\$ 232.86
930-394-92	\$ 232.86
930-394-93	\$ 232.86
930-394-94	\$ 232.86
930-394-95	\$ 232.86
930-394-96	\$ 232.86
930-394-97	\$ 232.86
930-394-98	\$ 232.86
930-394-99	\$ 232.86
930-395-00	\$ 232.86
930-395-01	\$ 232.86
930-395-02	\$ 232.86
930-395-03	\$ 232.86
930-395-04	\$ 232.86

**City of Anaheim**  
**Community Facilities District No. 1989-3**  
**The Summit**  
**Special Tax Levy for Fiscal Year 2011-12**

<u>Assessor's Parcel Number</u>	<u>FY 2011-12 Special Tax</u>
930-395-05	\$ 232.86
930-395-06	\$ 232.86
930-395-07	\$ 232.86
930-395-08	\$ 232.86
930-395-09	\$ 232.86
930-395-10	\$ 232.86
930-395-11	\$ 232.86
930-395-12	\$ 232.86
930-395-13	\$ 232.86
930-395-14	\$ 232.86
930-395-15	\$ 232.86
930-395-16	\$ 232.86
930-395-17	\$ 232.86
930-395-18	\$ 232.86
930-395-19	\$ 232.86
930-395-20	\$ 232.86
930-395-21	\$ 232.86
930-395-22	\$ 232.86
930-395-23	\$ 232.86
930-395-24	\$ 232.86
930-395-25	\$ 232.86
930-395-26	\$ 232.86
930-395-27	\$ 232.86
930-395-28	\$ 232.86
930-395-29	\$ 232.86
930-395-30	\$ 232.86
930-395-31	\$ 232.86
930-395-32	\$ 232.86
930-395-33	\$ 232.86
930-395-34	\$ 232.86
930-395-35	\$ 232.86
930-395-36	\$ 232.86
930-395-37	\$ 232.86
930-395-38	\$ 232.86
930-395-39	\$ 232.86
930-395-40	\$ 232.86
930-395-41	\$ 232.86
930-395-42	\$ 232.86
930-395-43	\$ 232.86
930-395-44	\$ 232.86
930-395-45	\$ 232.86
930-395-46	\$ 232.86
930-395-47	\$ 232.86
930-395-48	\$ 232.86
930-395-49	\$ 232.86
930-395-50	\$ 232.86
930-395-51	\$ 232.86
930-395-52	\$ 232.86
930-395-53	\$ 232.86
930-395-54	\$ 232.86
930-395-55	\$ 232.86
930-395-56	\$ 232.86
930-395-57	\$ 232.86
930-395-58	\$ 232.86

**City of Anaheim  
Community Facilities District No. 1989-3  
The Summit  
Special Tax Levy for Fiscal Year 2011-12**

<u>Assessor's Parcel Number</u>	<u>FY 2011-12 Special Tax</u>
930-395-59	\$ 232.86
930-395-60	\$ 232.86
930-395-61	\$ 232.86
930-395-62	\$ 232.86
930-395-63	\$ 232.86
930-395-64	\$ 232.86
930-395-65	\$ 232.86
930-395-66	\$ 232.86
930-395-67	\$ 232.86
930-395-68	\$ 232.86
930-395-69	\$ 232.86
930-395-70	\$ 232.86
930-395-71	\$ 232.86
930-395-72	\$ 232.86
930-395-73	\$ 232.86
930-395-74	\$ 232.86
930-395-75	\$ 232.86
930-395-76	\$ 232.86
930-395-77	\$ 232.86
930-395-78	\$ 232.86
930-395-79	\$ 232.86
930-395-80	\$ 232.86
930-395-81	\$ 232.86
930-395-82	\$ 232.86
930-395-83	\$ 232.86
930-395-84	\$ 232.86
930-395-85	\$ 232.86
930-395-86	\$ 232.86
930-395-87	\$ 232.86
930-395-88	\$ 232.86
930-395-89	\$ 232.86
930-395-90	\$ 232.86
930-395-91	\$ 232.86
930-395-92	\$ 232.86
930-395-93	\$ 232.86
930-395-94	\$ 232.86
930-395-95	\$ 232.86
930-395-96	\$ 232.86
930-395-97	\$ 232.86
930-395-98	\$ 232.86
930-395-99	\$ 232.86
930-396-00	\$ 232.86
930-396-01	\$ 232.86
930-396-02	\$ 232.86
930-396-03	\$ 232.86
930-396-04	\$ 232.86
930-396-05	\$ 232.86
930-396-06	\$ 232.86
930-396-07	\$ 232.86
930-396-08	\$ 232.86
930-396-09	\$ 232.86
930-396-10	\$ 232.86
930-396-11	\$ 232.86
930-396-12	\$ 232.86

**City of Anaheim  
Community Facilities District No. 1989-3  
The Summit  
Special Tax Levy for Fiscal Year 2011-12**

<u>Assessor's Parcel Number</u>	<u>FY 2011-12 Special Tax</u>
930-396-13	\$ 232.86
930-396-14	\$ 232.86
930-396-15	\$ 232.86
930-396-16	\$ 232.86
930-396-17	\$ 232.86
930-396-18	\$ 232.86
930-396-19	\$ 232.86
930-396-20	\$ 232.86
930-396-21	\$ 232.86
930-396-22	\$ 232.86
930-396-23	\$ 232.86
930-396-24	\$ 232.86
930-396-25	\$ 232.86
930-396-26	\$ 232.86
930-396-27	\$ 232.86
930-396-28	\$ 232.86
930-396-29	\$ 232.86
930-396-30	\$ 232.86
930-396-31	\$ 232.86
930-396-32	\$ 232.86
930-396-33	\$ 232.86
930-396-34	\$ 232.86
930-396-35	\$ 232.86
930-396-36	\$ 232.86
930-396-37	\$ 232.86
930-396-38	\$ 232.86
930-396-39	\$ 232.86
930-396-40	\$ 232.86
930-396-41	\$ 232.86
930-396-42	\$ 232.86
930-396-43	\$ 232.86
930-396-44	\$ 232.86
930-396-45	\$ 232.86
930-396-46	\$ 232.86
930-396-47	\$ 232.86
930-396-48	\$ 232.86
930-396-49	\$ 232.86
930-396-50	\$ 232.86
930-396-51	\$ 232.86
930-396-52	\$ 232.86
930-396-53	\$ 232.86
930-396-54	\$ 232.86
930-396-55	\$ 232.86
930-396-56	\$ 232.86
930-396-57	\$ 232.86
930-396-58	\$ 232.86
930-396-59	\$ 232.86
930-396-60	\$ 232.86
930-396-61	\$ 232.86
930-396-62	\$ 232.86
930-396-63	\$ 232.86
930-396-64	\$ 232.86
930-396-65	\$ 232.86
930-396-66	\$ 232.86

**City of Anaheim**  
**Community Facilities District No. 1989-3**  
**The Summit**  
**Special Tax Levy for Fiscal Year 2011-12**

<u>Assessor's Parcel Number</u>	<u>FY 2011-12 Special Tax</u>
930-396-67	\$ 232.86
930-396-68	\$ 232.86
930-396-69	\$ 232.86
930-396-70	\$ 232.86
930-396-71	\$ 232.86
930-396-72	\$ 232.86
930-396-73	\$ 232.86
930-449-02	\$ 232.86
930-449-03	\$ 232.86
930-449-04	\$ 232.86
930-449-05	\$ 232.86
930-449-06	\$ 232.86
930-449-07	\$ 232.86
930-449-08	\$ 232.86
930-449-09	\$ 232.86
930-449-10	\$ 232.86
930-449-11	\$ 232.86
930-449-12	\$ 232.86
930-449-13	\$ 232.86
930-449-14	\$ 232.86
930-449-15	\$ 232.86
930-449-16	\$ 232.86
930-449-17	\$ 232.86
930-449-18	\$ 232.86
930-449-19	\$ 232.86
930-449-20	\$ 232.86
930-449-21	\$ 232.86
930-449-22	\$ 232.86
930-449-23	\$ 232.86
930-449-24	\$ 232.86
930-449-25	\$ 232.86
930-449-26	\$ 232.86
930-449-27	\$ 232.86
930-449-28	\$ 232.86
930-449-29	\$ 232.86
930-449-30	\$ 232.86
930-449-31	\$ 232.86
930-449-32	\$ 232.86
930-449-33	\$ 232.86
930-449-34	\$ 232.86
930-449-35	\$ 232.86
930-449-36	\$ 232.86
930-449-37	\$ 232.86
930-449-38	\$ 232.86
930-449-39	\$ 232.86
930-449-40	\$ 232.86
930-449-41	\$ 232.86
930-449-42	\$ 232.86
930-449-43	\$ 232.86
930-449-44	\$ 232.86
930-449-45	\$ 232.86
930-449-46	\$ 232.86
930-449-47	\$ 232.86
930-449-48	\$ 232.86

**City of Anaheim  
Community Facilities District No. 1989-3  
The Summit  
Special Tax Levy for Fiscal Year 2011-12**

<u>Assessor's Parcel Number</u>	<u>FY 2011-12 Special Tax</u>
930-449-49	\$ 232.86
930-449-50	\$ 232.86
930-449-51	\$ 232.86
930-449-52	\$ 232.86
930-449-53	\$ 232.86
930-449-54	\$ 232.86
930-583-41	\$ 232.86
930-583-42	\$ 232.86
930-583-43	\$ 232.86
930-583-44	\$ 232.86
930-583-45	\$ 232.86
930-583-46	\$ 232.86
930-583-47	\$ 232.86
930-583-48	\$ 232.86
930-583-49	\$ 232.86
930-583-50	\$ 232.86
930-583-51	\$ 232.86
930-583-52	\$ 232.86
930-583-53	\$ 232.86
930-583-54	\$ 232.86
930-583-55	\$ 232.86
930-583-56	\$ 232.86
930-583-57	\$ 232.86
930-583-58	\$ 232.86
930-583-59	\$ 232.86
930-583-60	\$ 232.86
930-583-61	\$ 232.86
930-583-62	\$ 232.86
930-583-63	\$ 232.86
930-583-64	\$ 232.86
930-583-65	\$ 232.86
930-583-66	\$ 232.86
930-583-67	\$ 232.86
930-583-68	\$ 232.86
930-583-69	\$ 232.86
930-583-70	\$ 232.86
930-583-71	\$ 232.86
930-583-72	\$ 232.86
930-583-73	\$ 232.86
930-583-74	\$ 232.86
930-583-75	\$ 232.86
930-583-76	\$ 232.86
930-583-77	\$ 232.86
930-583-78	\$ 232.86
930-583-79	\$ 232.86
930-583-80	\$ 232.86
930-583-81	\$ 232.86
930-583-82	\$ 232.86
930-583-83	\$ 232.86
930-583-84	\$ 232.86
930-583-85	\$ 232.86
930-583-86	\$ 232.86
930-583-87	\$ 232.86
930-583-88	\$ 232.86

**City of Anaheim**  
**Community Facilities District No. 1989-3**  
**The Summit**  
**Special Tax Levy for Fiscal Year 2011-12**

<u>Assessor's Parcel Number</u>	<u>FY 2011-12 Special Tax</u>
930-583-89	\$ 232.86
930-583-90	\$ 232.86
930-583-91	\$ 232.86
930-583-92	\$ 232.86
930-583-93	\$ 232.86
930-583-94	\$ 232.86
930-583-95	\$ 232.86
930-583-96	\$ 232.86
930-583-97	\$ 232.86
930-583-98	\$ 232.86
938-390-32	\$ 232.86
938-390-33	\$ 232.86
938-390-34	\$ 232.86
938-390-35	\$ 232.86
938-390-36	\$ 232.86
938-390-37	\$ 232.86
938-390-38	\$ 232.86
938-390-39	\$ 232.86
938-390-40	\$ 232.86
938-390-41	\$ 232.86
938-390-42	\$ 232.86
938-390-43	\$ 232.86
938-390-44	\$ 232.86
938-390-45	\$ 232.86
938-390-46	\$ 232.86
938-390-47	\$ 232.86
938-390-48	\$ 232.86
938-390-49	\$ 232.86
938-390-50	\$ 232.86
938-390-51	\$ 232.86
938-390-52	\$ 232.86
938-390-53	\$ 232.86
938-390-54	\$ 232.86
938-390-55	\$ 232.86
938-390-56	\$ 232.86
938-390-57	\$ 232.86
938-390-58	\$ 232.86
938-390-59	\$ 232.86
938-390-60	\$ 232.86
938-390-61	\$ 232.86
938-390-62	\$ 232.86
938-390-63	\$ 232.86
938-390-64	\$ 232.86
938-390-65	\$ 232.86
938-390-66	\$ 232.86
938-390-67	\$ 232.86
938-390-68	\$ 232.86
938-390-69	\$ 232.86
938-390-70	\$ 232.86
938-390-71	\$ 232.86
938-390-72	\$ 232.86
938-390-73	\$ 232.86
938-390-74	\$ 232.86
938-390-75	\$ 232.86



**City of Anaheim**  
**Community Facilities District No. 1989-3**  
**The Summit**  
**Special Tax Levy for Fiscal Year 2011-12**

<u>Assessor's Parcel Number</u>	<u>FY 2011-12 Special Tax</u>
938-390-76	\$ 232.86
938-390-77	\$ 232.86
938-390-78	\$ 232.86
938-390-79	\$ 232.86
938-390-80	\$ 232.86
938-390-81	\$ 232.86
938-390-82	\$ 232.86
938-390-83	\$ 232.86
938-390-84	\$ 232.86
938-390-85	\$ 232.86
938-390-86	\$ 232.86
<b>Number of Records:</b>	<b>2,009</b>
<b>Total Levy:</b>	<b>\$ 876,703.06</b>

**EXHIBIT E**

---

***CITY OF ANAHEIM  
COMMUNITY FACILITIES DISTRICT No. 1989-3***

***Delinquency Report***

---

**Fiscal Year 2010-2011  
Delinquency Report  
City of Anaheim  
Community Facilities District No. 1989-3  
(Summit)**

Assessor's Parcel Number	Owner	Delinquent Installment		FY 2010-11 Levy	Delinquent Amount
		DEC 10	APR 10		
354-271-03	MARCEL, ALFRED MARCO		X	\$333.45	\$166.72
354-271-04	MERIZALDE, SANDRA		X	\$333.45	\$166.72
354-272-04	LIN, PEI-TE		X	\$333.45	\$166.72
354-272-27	KIASSI, SHAHIN	X	X	\$333.45	\$333.45
354-273-11	SHAFIE, SEYED ALI		X	\$333.45	\$166.72
354-273-33	BLAIR, MICHELLE	X	X	\$333.45	\$333.45
354-281-09	BUTTACAVOLI, MIKE	X	X	\$566.75	\$566.75
354-282-02	PANGAN, CRISPIN S	X	X	\$566.75	\$566.75
354-282-23	DAWSON, GARY W		X	\$566.75	\$283.37
354-341-02	SALERNO, KEVIN J	X	X	\$733.50	\$733.50
354-341-36	BRENNAN, JASON TR		X	\$566.75	\$283.37
354-351-02	MIYAGISHIMA, THELMA	X	X	\$566.75	\$566.75
354-392-01	ALVAREZ, FRANCISCO M	X	X	\$566.75	\$566.75
354-392-08	BANK, WELLS FARGO N A TR	X	X	\$566.75	\$566.75
354-393-12	FOLEY, CHRISTOPHER P TR		X	\$566.75	\$283.37
354-401-23	WILSON, BLAKE E TR		X	\$733.50	\$366.75
354-471-47	LAU, TADEO		X	\$333.45	\$166.72
354-471-57	MESSICK, THOMAS H		X	\$333.45	\$166.72
354-471-58	TANIMOTO, RICHARD M		X	\$566.75	\$283.37
354-473-03	GATES, LAWRENCE M TR	X	X	\$333.45	\$333.45
354-473-17	FARR, DERIAN M	X	X	\$333.45	\$333.45
354-531-16	SCHMIDT, TIMOTHY LLOYD TR		X	\$333.45	\$166.72
354-552-06	SOMERS, MARK		X	\$333.45	\$166.72
354-552-29	KHURY, NAJAT K		X	\$733.50	\$366.75
354-591-24	BROWNELL, ROBERT C		X	\$733.50	\$366.75
354-641-05	LOCKE, RICK S		X	\$333.45	\$166.72
514-021-07	MURPHY, TAMARA P		X	\$566.75	\$283.37
514-032-06	NGUYEN, DONG	X	X	\$566.75	\$566.75
514-053-32	SANDOVAL, MARGARET PUENTE	X	X	\$566.75	\$566.75
514-053-36	PHONGDARA, DONNY	X	X	\$566.75	\$566.75
514-061-08	HOSBAND, WILLIAM T		X	\$566.75	\$283.37
514-061-20	ALTAF, ARSHAD	X	X	\$566.75	\$566.75
514-061-38	SOWSKI, RICHARD H		X	\$566.75	\$283.37
514-061-46	KIANI, FARAYDOUN Z	X	X	\$566.75	\$566.75
514-101-06	KIM, JIM SEUNG		X	\$566.75	\$283.37
930-264-30	AUSK, LYLE	X	X	\$233.30	\$233.30
930-264-47	LAYTON, JENELL K		X	\$233.30	\$116.65
930-264-52	COSSEY, DONALD GRANT	X	X	\$233.30	\$233.30
930-264-73	LOVE, YVONNIE L	X	X	\$233.30	\$233.30
930-265-20	LOVING, BRYAN M	X	X	\$233.30	\$233.30
930-266-26	LAMADRID-ERICSON,	X	X	\$233.30	\$233.30
930-394-31	GARCIA, CESAR ROBERTO		X	\$233.30	\$116.65

**Fiscal Year 2010-2011  
Delinquency Report  
City of Anaheim  
Community Facilities District No. 1989-3  
(Summit)**

Assessor's Parcel <u>Number</u>	<u>Owner</u>	Delinquent Installment		FY 2010-11 <u>Levy</u>	Delinquent <u>Amount</u>
		<u>DEC 10</u>	<u>APR 10</u>		
930-394-47	DAVIS, LORI B		X	\$233.30	\$116.65
930-394-51	SHAHID, SYED FARAZ		X	\$233.30	\$116.65
930-395-03	PADILLA, LISA		X	\$233.30	\$116.65
930-395-49	CANO, ROBERT O	X	X	\$233.30	\$233.30
930-396-56	DOMINGUEZ, DELIA	X	X	\$233.30	\$233.30
930-396-68	MOON, SCOTT		X	\$233.30	\$116.65
930-583-69	KWAK, EUN YOUNG	X	X	\$233.30	\$233.30
930-583-76	BEATTY, STEVEN R	X	X	\$233.30	\$233.30
930-583-92	BEGGS, ROBERT MICHAEL	X	X	\$233.30	\$233.30
930-583-98	BOOTOW, BRIAN K	X	X	\$233.30	\$233.30
938-390-33	PATEL, JAYANTIBHAI	X	X	\$233.30	\$233.30

**Total Levy for FY 2010-11: \$878,354.70**

**Total Parcels Levied in FY 2010-11: 2,009**

**Delinquent Amount as of 6/23/2011: \$16,101.99**

**Collection Amount as of 6/23/2011: \$862,252.71**

**FY 2010-11 Delinquency Rate: 1.83%**

**Number of Delinquent Parcels: 53**

**Delinquency Report as of June 23, 2011  
City of Anaheim CFD No. 1989-3**

Assessor's Parcel		Length of Time									Total
Number	Owner	Delinquent	FY 04-05	FY 05-06	FY 06-07	FY 07-08	FY 08-09	FY 09-10	FY 10-11	Delinquency	
354-271-03	MARCEL, ALFRED MARCO	74	\$0.00	\$0.00	\$0.00	\$0.00	\$0.00	\$0.00	\$166.72	\$166.72	
354-271-04	MERIZALDE, SANDRA	439	\$0.00	\$0.00	\$0.00	\$0.00	\$0.00	\$166.72	\$166.72	\$333.44	
354-272-04	LIN, PEI-TE	74	\$0.00	\$0.00	\$0.00	\$0.00	\$0.00	\$0.00	\$166.72	\$166.72	
354-272-27	KIASSI, SHAHIN	195	\$0.00	\$0.00	\$0.00	\$0.00	\$0.00	\$0.00	\$333.45	\$333.45	
354-273-11	SHAFIE, SEYED ALI	74	\$0.00	\$0.00	\$0.00	\$0.00	\$0.00	\$0.00	\$166.72	\$166.72	
354-273-33	BLAIR, MICHELLE	195	\$0.00	\$0.00	\$0.00	\$0.00	\$0.00	\$0.00	\$333.45	\$333.45	
354-281-09	BUTTACAVOLI, MIKE	195	\$0.00	\$0.00	\$0.00	\$0.00	\$0.00	\$0.00	\$566.75	\$566.75	
354-282-02	PANGAN, CRISPIN S	925	\$0.00	\$0.00	\$0.00	\$0.00	\$541.45	\$566.75	\$566.75	\$1,674.95	
354-282-23	DAWSON, GARY W	74	\$0.00	\$0.00	\$0.00	\$0.00	\$0.00	\$0.00	\$283.37	\$283.37	
354-341-02	SALERNO, KEVIN J	925	\$0.00	\$0.00	\$0.00	\$0.00	\$700.74	\$733.50	\$733.50	\$2,167.74	
354-341-36	BRENNAN, JASON TR	74	\$0.00	\$0.00	\$0.00	\$0.00	\$0.00	\$0.00	\$283.37	\$283.37	
354-351-02	MIYAGISHIMA, THELMA	195	\$0.00	\$0.00	\$0.00	\$0.00	\$0.00	\$0.00	\$566.75	\$566.75	
354-392-01	ALVAREZ, FRANCISCO M	195	\$0.00	\$0.00	\$0.00	\$0.00	\$0.00	\$0.00	\$566.75	\$566.75	
354-392-08	BANK, WELLS FARGO N A TR	1,535	\$0.00	\$0.00	\$274.91	\$541.45	\$541.45	\$566.75	\$566.75	\$2,491.31	
354-393-12	FOLEY, CHRISTOPHER P TR	74	\$0.00	\$0.00	\$0.00	\$0.00	\$0.00	\$0.00	\$283.37	\$283.37	
354-401-23	WILSON, BLAKE E TR	74	\$0.00	\$0.00	\$0.00	\$0.00	\$0.00	\$0.00	\$366.75	\$366.75	
354-471-47	LAU, TADEO	74	\$0.00	\$0.00	\$0.00	\$0.00	\$0.00	\$0.00	\$166.72	\$166.72	
354-471-57	MESSICK, THOMAS H	74	\$0.00	\$0.00	\$0.00	\$0.00	\$0.00	\$0.00	\$166.72	\$166.72	
354-471-58	TANIMOTO, RICHARD M	74	\$0.00	\$0.00	\$0.00	\$0.00	\$0.00	\$0.00	\$283.37	\$283.37	
354-473-03	GATES, LAWRENCE M TR	195	\$0.00	\$0.00	\$0.00	\$0.00	\$0.00	\$0.00	\$333.45	\$333.45	
354-473-17	FARR, DERIAN M	195	\$0.00	\$0.00	\$0.00	\$0.00	\$0.00	\$0.00	\$333.45	\$333.45	
354-531-16	SCHMIDT, TIMOTHY LLOYD TR	74	\$0.00	\$0.00	\$0.00	\$0.00	\$0.00	\$0.00	\$166.72	\$166.72	
354-552-06	SOMERS, MARK	74	\$0.00	\$0.00	\$0.00	\$0.00	\$0.00	\$0.00	\$166.72	\$166.72	
354-552-29	KHURY, NAJAT K	74	\$0.00	\$0.00	\$0.00	\$0.00	\$0.00	\$0.00	\$366.75	\$366.75	
354-591-24	BROWNELL, ROBERT C	804	\$0.00	\$0.00	\$0.00	\$0.00	\$350.37	\$366.75	\$366.75	\$1,083.87	
354-641-05	LOCKE, RICK S	74	\$0.00	\$0.00	\$0.00	\$0.00	\$0.00	\$0.00	\$166.72	\$166.72	
354-641-15	O'BRIEN, KEN	439	\$0.00	\$0.00	\$0.00	\$0.00	\$0.00	\$166.72	\$0.00	\$166.72	
514-021-07	MURPHY, TAMARA P	74	\$0.00	\$0.00	\$0.00	\$0.00	\$0.00	\$0.00	\$283.37	\$283.37	
514-032-06	NGUYEN, DONG	195	\$0.00	\$0.00	\$0.00	\$0.00	\$0.00	\$0.00	\$566.75	\$566.75	
514-042-18	JOHNSON, JANET	1,535	\$0.00	\$0.00	\$274.91	\$541.45	\$0.00	\$0.00	\$0.00	\$816.36	
514-053-32	SERAFIN, MARGARET P	560	\$0.00	\$0.00	\$0.00	\$0.00	\$0.00	\$566.75	\$566.75	\$1,133.50	
514-053-36	PHONGDARA, DONNY	195	\$0.00	\$0.00	\$0.00	\$0.00	\$0.00	\$0.00	\$566.75	\$566.75	
514-061-08	HOSBAND, WILLIAM T	74	\$0.00	\$0.00	\$0.00	\$0.00	\$0.00	\$0.00	\$283.37	\$283.37	
514-061-20	ALTAF, ARSHAD	925	\$0.00	\$0.00	\$0.00	\$0.00	\$541.45	\$283.37	\$566.75	\$1,391.57	
514-061-38	SOWSKI, RICHARD H	74	\$0.00	\$0.00	\$0.00	\$0.00	\$0.00	\$0.00	\$283.37	\$283.37	
514-061-46	KIANI, FARAYDOUN Z	195	\$0.00	\$0.00	\$0.00	\$0.00	\$0.00	\$0.00	\$566.75	\$566.75	
514-101-06	KIM, JIN SEUNG	74	\$0.00	\$0.00	\$0.00	\$0.00	\$0.00	\$0.00	\$283.37	\$283.37	
930-264-30	AUSK, LYLE	195	\$0.00	\$0.00	\$0.00	\$0.00	\$0.00	\$0.00	\$233.30	\$233.30	
930-264-47	LAYTON, JENELL K	74	\$0.00	\$0.00	\$0.00	\$0.00	\$0.00	\$0.00	\$116.65	\$116.65	
930-264-52	COSSEY, DONALD GRANT	804	\$0.00	\$0.00	\$0.00	\$0.00	\$111.44	\$233.30	\$233.30	\$578.04	
930-264-73	LOVE, YVONNIE L	195	\$0.00	\$0.00	\$0.00	\$0.00	\$0.00	\$0.00	\$233.30	\$233.30	
930-265-20	LOVING, BRYAN M	195	\$0.00	\$0.00	\$0.00	\$0.00	\$0.00	\$0.00	\$233.30	\$233.30	

**Delinquency Report as of June 23, 2011  
City of Anaheim CFD No. 1989-3**

<b>Assessor's Parcel</b>		<b>Length of Time</b>								<b>Total</b>
<b>Number</b>	<b>Owner</b>	<b>Delinquent</b>	<b>FY 04-05</b>	<b>FY 05-06</b>	<b>FY 06-07</b>	<b>FY 07-08</b>	<b>FY 08-09</b>	<b>FY 09-10</b>	<b>FY 10-11</b>	<b>Delinquency</b>
930-266-26	LAMADRID-ERICSON,	195	\$0.00	\$0.00	\$0.00	\$0.00	\$0.00	\$0.00	\$233.30	\$233.30
930-394-31	GARCIA, CESAR ROBERTO	74	\$0.00	\$0.00	\$0.00	\$0.00	\$0.00	\$0.00	\$116.65	\$116.65
930-394-47	DAVIS, LORI B	804	\$0.00	\$0.00	\$0.00	\$0.00	\$111.44	\$233.30	\$116.65	\$461.39
930-394-51	SHAHID, SYED FARAZ	74	\$0.00	\$0.00	\$0.00	\$0.00	\$0.00	\$0.00	\$116.65	\$116.65
930-395-03	PADILLA, LISA	74	\$0.00	\$0.00	\$0.00	\$0.00	\$0.00	\$0.00	\$116.65	\$116.65
930-395-49	CANO, ROBERT O	195	\$0.00	\$0.00	\$0.00	\$0.00	\$0.00	\$0.00	\$233.30	\$233.30
930-396-56	DOMINGUEZ, DELIA	195	\$0.00	\$0.00	\$0.00	\$0.00	\$0.00	\$0.00	\$233.30	\$233.30
930-396-68	MOON, SCOTT	74	\$0.00	\$0.00	\$0.00	\$0.00	\$0.00	\$0.00	\$116.65	\$116.65
930-583-69	KWAK, EUN YOUNG	195	\$0.00	\$0.00	\$0.00	\$0.00	\$0.00	\$0.00	\$233.30	\$233.30
930-583-76	BEATTY, STEVEN R	1,535	\$0.00	\$0.00	\$113.16	\$222.88	\$222.88	\$233.30	\$233.30	\$1,025.52
930-583-92	BEGGS, ROBERT MICHAEL	195	\$0.00	\$0.00	\$0.00	\$0.00	\$0.00	\$0.00	\$233.30	\$233.30
930-583-98	BOOTOW, BRIAN K	195	\$0.00	\$0.00	\$0.00	\$0.00	\$0.00	\$0.00	\$233.30	\$233.30
938-390-33	PATEL, JAYANTIBHAI	439	\$0.00	\$0.00	\$0.00	\$0.00	\$0.00	\$116.65	\$233.30	\$349.95
<b>Total Delinquent Amount:</b>			<b>\$0.00</b>	<b>\$0.00</b>	<b>\$662.98</b>	<b>\$1,305.78</b>	<b>\$3,121.22</b>	<b>\$4,233.86</b>	<b>\$16,101.99</b>	<b>\$25,425.83</b>
<b>Total Collection Amount:</b>			<b>\$941,796.11</b>	<b>\$880,842.56</b>	<b>\$851,448.08</b>	<b>\$837,832.50</b>	<b>\$836,017.06</b>	<b>\$874,120.84</b>	<b>\$862,252.71</b>	
<b>Total Levy:</b>			<b>\$941,796.11</b>	<b>\$880,842.56</b>	<b>\$852,111.06</b>	<b>\$839,138.28</b>	<b>\$839,138.28</b>	<b>\$878,354.70</b>	<b>\$878,354.70</b>	
<b>Delinquency Rate:</b>			<b>0.00%</b>	<b>0.00%</b>	<b>0.08%</b>	<b>0.16%</b>	<b>0.37%</b>	<b>0.48%</b>	<b>1.83%</b>	
<b>Number of Parcels Subject to Levy:</b>			<b>2,009</b>	<b>2,009</b>	<b>2,009</b>	<b>2,009</b>	<b>2,009</b>	<b>2,009</b>	<b>2,009</b>	
<b>Number of Delinquent Parcels:</b>			<b>0</b>	<b>0</b>	<b>3</b>	<b>3</b>	<b>8</b>	<b>12</b>	<b>53</b>	

Source: County of Orange.

10:34:12AM 6/24/2011

M:\MISC\Admin2\California\Orange.CO\DelqData\Delinquency Report.rpt

**EXHIBIT F**

---

***CITY OF ANAHEIM  
COMMUNITY FACILITIES DISTRICT No. 1989-3***

***CDIAC Report***

---

**STATE OF CALIFORNIA  
MELLO-ROOS COMMUNITY FACILITIES DISTRICT (CFD)  
YEARLY FISCAL STATUS REPORT**

California Debt and Investment Advisory Commission  
915 Capitol Mall, Room 400, Sacramento, CA 95814  
(916) 653-3269 FAX (916) 654-7440

For Office Use Only CDIAC# 1999-1971 Fiscal Year 09-10
--

**I. General Information**

A. Issuer City of Anaheim

B. Community Facilities District Number/Name (Mello-Roos only): CFD No. 1989-3 / The Summit

C. Name/Title/Series of Bond Issue: Special Tax Bonds, Series 1999

D. Indicate Credit Rating: \_\_\_\_\_ Rating Agency Moody's/S&P Rating "AAA" Not Rated

E. Date of Bond Issuance: November 17, 1999

F. Original Principal Amount of Bonds: \$ 9,085,000

G. Reserve Fund Minimum Balance Required Yes  Amount \$ 620,950 No

**II. FUND BALANCE FISCAL STATUS**

Balances Reported as of fiscal year ending: June 30, 2010 (Year)

A. Principal Amount of Bonds Outstanding: \$ 4,165,000

B. Bond Reserve Fund: \$ 620,950

C. Capitalized Interest Fund: \$ 0

D. Construction Fund(s) (Mello-Roos only): \$ 0

**III. ASSESSED VALUE OF ALL PARCELS IN CFD SUBJECT TO SPECIAL TAX (Mello-Roos only)**

A. Assessed Value Reported as of: Fiscal Year 2010-11 (Date) (Check One)  
(Most recent tax roll)  From Tax Roll  
 From Appraisal of Property  
*(Use only in first year before annual tax roll billing commences)*

B. Total Assessed Value of All Parcels \$ 955,749,290

**IV. TAX COLLECTION INFORMATION**

Reported as of fiscal year ending: June 30, 2010 (Year)

A. Total Amount of Special Taxes Due \$ 878,355

B. Total Amount of Unpaid Special Taxes \$ 12,001

C. The taxes are paid under the county's Teeter Plan. Yes  No

**V. DELINQUENT REPORTING INFORMATION**

Delinquent Parcel Information Reported as of the current Tax Roll of: October 5, 2010 (Date)

A. Total Number of Delinquent Parcels: 36

B. Total Amount of Taxes Due on Delinquent Parcels \$ 18,664

**VI. FORECLOSURE INFORMATION FOR FISCAL YEAR (Mello-Roos only)**

*(Aggregate totals, if foreclosure commenced on same date)*

Date Foreclosure Commenced	Total Number of Foreclosure Parcels	Total Amount of Tax Due on Foreclosure Parcels
NA	NA	NA

(Attach additional sheets if necessary)



**STATE OF CALIFORNIA  
MELLO-ROOS COMMUNITY FACILITIES DISTRICT (CFD)  
YEARLY FISCAL STATUS REPORT**

(Continued)

**VII. ISSUE RETIRED**

This issue is retired and no longer subject to the Yearly Fiscal Status requirement. *(Indicate reason for retirement.)*

- A. Matured                      Yes:                       No:                       If yes, indicate final maturity date: \_\_\_\_\_
- B. Refunded Entirely        Yes:                       No:                       If yes, state refunding bond title: \_\_\_\_\_ and issue date : \_\_\_\_\_
- C. Other: \_\_\_\_\_

**VIII. NAME OF PARTY COMPLETING THIS FORM**

Name: Donna Segura

Title: Manager

Firm/Agency: David Taussig & Associates, Inc.

Address: 4280 Latham Street, Suite M

City/State/Zip: Riverside, California, 92501

Phone No.: (951) 781-3100                      Email: [donnas@taussig.com](mailto:donnas@taussig.com)

Date of Report: October 11, 2010

K:\CLIENTS2\Anaheim\District Administration\CDIAC\1011\CDIAC 893.doc

**Completion and submittal of this form to the California Debt and Investment Advisory Commission will assure your compliance with California State law. Section 53359.5 of the California Government Code requires that all agencies issuing Mello-Roos Community Facilities bonds after January 1, 1993 to report specific information to the Commission by October 30<sup>th</sup> of each year.**

**EXHIBIT G**

---

***CITY OF ANAHEIM  
COMMUNITY FACILITIES DISTRICT No. 1989-3***

***Sample Notice of Special Tax***

---

NOTICE OF SPECIAL TAX  
CITY OF ANAHEIM, CA  
COMMUNITY FACILITIES DISTRICT NO. 1989-3

TO: THE PROSPECTIVE PURCHASER OF THE REAL PROPERTY KNOWN AS:

APN: 123-456-99  
Anaheim, CA 92808

THIS IS NOTIFICATION TO YOU PRIOR TO YOUR ENTERING INTO A CONTRACT TO PURCHASE THIS PROPERTY. THE SELLER IS REQUIRED TO GIVE YOU THIS NOTICE AND TO OBTAIN A COPY SIGNED BY YOU TO INDICATE THAT YOU HAVE RECEIVED AND READ A COPY OF THIS NOTICE.

1. THIS IS NOTIFICATION TO YOU PRIOR TO YOUR ENTERING INTO A CONTRACT TO PURCHASE THIS PROPERTY. THE SELLER IS REQUIRED TO GIVE YOU THIS NOTICE AND TO OBTAIN A COPY SIGNED BY YOU TO INDICATE THAT YOU HAVE RECEIVED AND READ A COPY OF THIS NOTICE.

1. This property is subject to a special tax, which is in addition to the regular property taxes and any other charges and benefit assessments on the parcel. This special tax may not be imposed on all parcels within the city or county where the property is located. If you fail to pay the tax due each year, the property may be foreclosed upon and sold. The tax is used to provide public facilities that are likely to particularly benefit the property. YOU SHOULD TAKE THIS TAX AND THE BENEFITS FROM THE PUBLIC FACILITIES FOR WHICH IT PAYS INTO ACCOUNT IN DECIDING WHETHER TO BUY THIS PROPERTY.
2. The maximum special tax which may be levied against this parcel to pay for public facilities is \$xxx during the 2010/2011 tax year. The special tax will be levied each year until all of the authorized facilities are built and all special tax bonds are repaid. The final payment of interest and principal on the bonds is scheduled for calendar year 2014. A portion of the special tax is used to pay for ongoing services. There is no specified termination date for the special tax levied to pay for services.
3. The authorized facilities which are being paid for by the special taxes, and by the money received from the sale of bonds which are being repaid by the special taxes, are:
  - Improvements to Weir Canyon Road, Oak Hills Drive, and Serrano Avenue within CFD No. 1989-3
  - Improvements to Santa Ana Canyon Road including from Imperial Highway to East Hills (Bauer Ranch)
  - Regional Water Supply Storage System located within CFD No. 1989-3
  - Contribution to police station (site and facilities) located on Santa Ana Canyon Road
  - Contribution to district library site located on Santa Ana Canyon Road

These facilities may not yet have all been constructed or acquired, and it is possible that some may never be constructed or acquired.

In addition, the special taxes may be used to pay for costs of the following services:

- Ongoing Police and Fire Protection Services

YOU MAY OBTAIN A COPY OF THE RESOLUTION OF FORMATION WHICH AUTHORIZED CREATION OF THE COMMUNITY FACILITIES DISTRICT, AND WHICH SPECIFIES MORE PRECISELY HOW THE SPECIAL TAX IS APPORTIONED AND HOW THE PROCEEDS OF THE TAX WILL BE USED, FROM THE CITY OF ANAHEIM FINANCE DEPARTMENT BY CALLING (714) 254-5195. THERE MAY BE A CHARGE FOR THIS DOCUMENT NOT TO EXCEED THE ESTIMATED REASONABLE COST OF PROVIDING THE DOCUMENT.

I (WE) ACKNOWLEDGE THAT I (WE) HAVE RECEIVED A COPY OF THIS NOTICE. I (WE) UNDERSTAND THAT I (WE) MAY TERMINATE THE CONTRACT TO PURCHASE OR DEPOSIT RECEIPT AFTER RECEIVING THIS NOTICE FROM THE OWNER OR AGENT SELLING THE PROPERTY. THE CONTRACT MAY BE TERMINATED WITHIN THREE DAYS IF THE NOTICE WAS RECEIVED IN PERSON OR WITHIN FIVE DAYS AFTER IT WAS DEPOSITED IN THE MAIL BY GIVING WRITTEN NOTICE OF THAT TERMINATION TO THE OWNER OR AGENT SELLING THE PROPERTY.

\_\_\_\_\_  
DATE

\_\_\_\_\_  
SIGNATURE

\_\_\_\_\_  
DATE

\_\_\_\_\_  
SIGNATURE