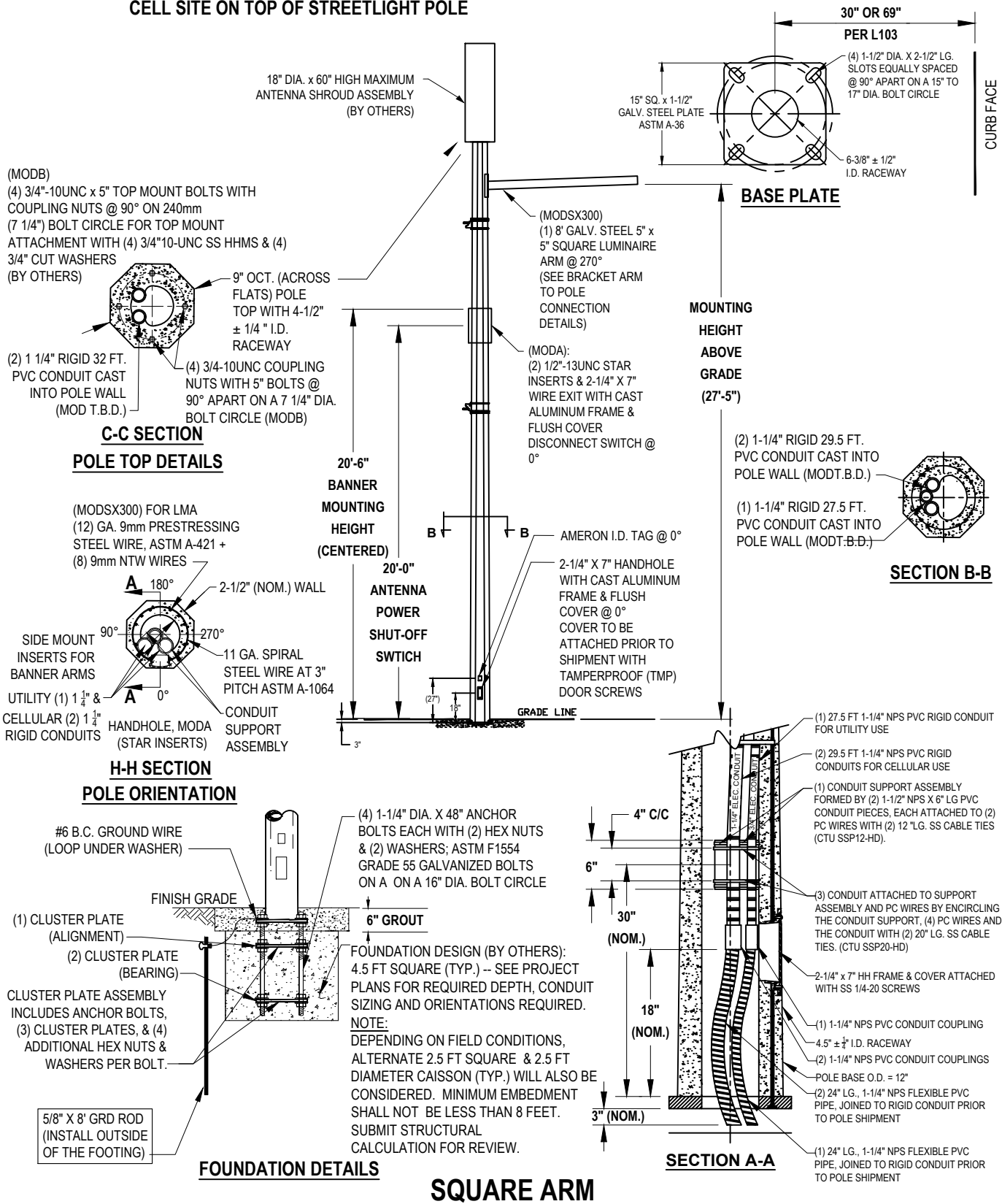


**SCOPE: THIS STANDARD SHOWS CITY OF ANAHEIM STREET LIGHT DESIGN #740 - FOR INSTALLATION OF CELL SITE ON TOP OF STREETLIGHT POLE**



FILENAME: L146 REV 0

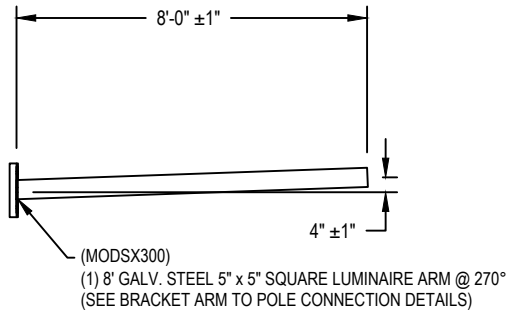
<b>CITY OF ANAHEIM</b> PUBLIC UTILITIES DEPARTMENT ELECTRICAL DIVISION T&D CONSTRUCTION STANDARDS				
APPROVALS				
SR ELEC ENG.	T&D MGR	SYS PLN MGR	OPS MGR	SUB MAINT
Ry	EB	N/A	DA	N/A

REVISION KEYS:	ADDED / REVISED TEXT	ADDED / REVISED MATERIAL
----------------	----------------------	--------------------------

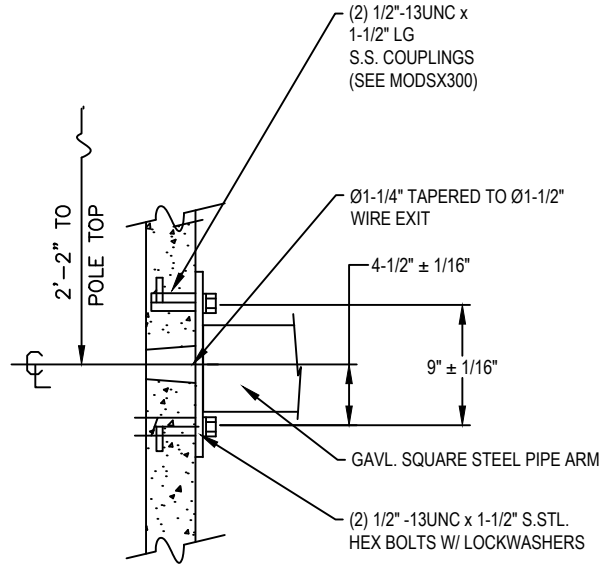
**CITY OF ANAHEIM**  
**STREET LIGHT DESIGN #740**  
**CELL SITE TOP**

NEW SHEET	NEW SHEET
REVISION NO. 0	
ISSUE DATE: 01-06-2020	
SHEET 1 OF 3	
CONSTRUCTION STANDARD:	L 148

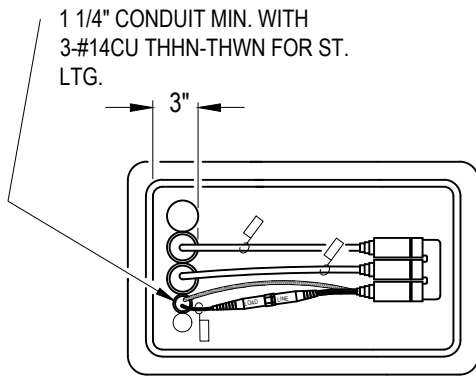
FILENAME: L146 REV 0



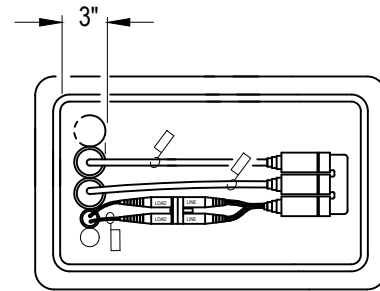
SQUARE ARM ARM DETAILS



SQUARE BRACKET ARM TO POLE CONNECTION

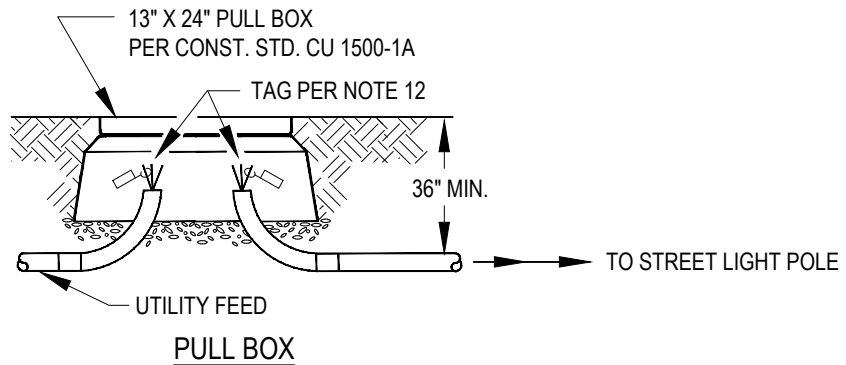


120V, SERVICE  
NOTE 12



240V, SERVICE  
SEE NOTE 12 & NOTE 13

PADMOUNT TRANSFORMER (PMT)  
OR SUBSURFACE TRANSFORMER (BURD)



PULL BOX

<b>CITY OF ANAHEIM</b> PUBLIC UTILITIES DEPARTMENT ELECTRICAL DIVISION T&D CONSTRUCTION STANDARDS				
APPROVALS				
SR ELEC ENG.	T&D MGR	SYS PLN MGR	OPS MGR	SUB MAINT
Ry	EB	N/A	DA	N/A

REVISION KEYS: ADDED / REVISED TEXT ADDED / REVISED MATERIAL

**CITY OF ANAHEIM**  
**STREET LIGHT DESIGN #740**  
**CELL SITE TOP**


NEW SHEET	NEW SHEET
REVISION NO.	0
ISSUE DATE:	01-06-2020
SHEET	2 OF 3
CONSTRUCTION STANDARD:	
<b>L 148</b>	

NOTES:

1. POLE CONCRETE SHALL BE 6000 PSI COMPRESSION MINIMUM IN 28 DAYS, MANUFACTURED TO ASTM C 1089-88.
2. THE POLE SHALL BE BLACK AND WHITE MIX 37 AND ENTIRELY COATED WITH AMERISHIELD ANTI-GRAFFITTI SEALANT.
3. BASE PLATE REFER TO SHEET 1 FOR DETAILS.
4. FOR COMPLETE LUMINAIRE UNIT WITH SET SCREWS TO ATTACH TO THE ARM , ORDER STOCK CODES **LISTED PER TABLE.**
5. WIRING FOR LUMINAIRE SHALL BE #14 COPPER CABLES WITH XHHW-2 INSULATION (BLACK-PHASE, WHITE-NEUTRAL, GREEN-GROUND) IN 1 1/4" CONDUIT FROM POLE BASE TO LUMINAIRE. SEE SHEET 2 FOR CONDUIT SIZE REQUIREMENT FROM SERVICE PULL BOX.
6. THE POLE DEPICTED IS DESIGNED TO WITHSTAND LOADS IMPARTED BY A CYLINDRICAL 18" DIA. X 60" TALL ANTENNA SHROUD. THE TOP MOUNT LMA AND THE LUMINAIRE PER 2016 CALIFORNIA BUILDING CODE ASCE 7-10 & 2015 AASHTO IN A 115 MPH WIND ZONE (3-SECOND GUSTS) . POLE CHECKED AGAINST LOCATION SPECIFIC SEISMIC CRITERIA. PLEASE ADVISE MFR IF INTENDED LOADING EXCEEDS THESE VALUES.
7. ANTENNA POWER SHUT OFF SWITCH FURNISHED AND INSTALLED BY WIRELESS COMPANY. DISCONNECT MOUNTING PROVISION BY OTHERS.
8. POLE CONDUITS SHALL BE SEPARATE AND NOT SHARED WITH ELECTRIC UTILITY. (1) 1 1/4" CONDUIT FOR UTILITY WITH CABLES PER NOTE 6. (1) 1 1/4" CONDUIT FOR ANTENNA POWER TO BE PROVIDED AND INSTALLED BY OTHERS. (1) 1 1/4" FOR ANTENNA CABLE.
9. STRUCTURAL STAMPED DRAWINGS TO BE SUBMITTED BY WIRELESS COMPANY TO C.O.A. STANDARDS SUPPORTING 115 MPH LOADING CRITERIA FOR POLE, BACKPLATE AND FOOTING WITH ALL ATTACHMENTS.
10. SEE CO 192 FOR BANNER ATTACHMENT.
11. COA TO PROVIDE 120V, 240V POSITION IN HAND HOLE WIRELESS COMPANY TO INSTALL MULTI/AUTO REG. EQUIP. UTILITY TO PROVIDE 20 AMP. MAX IN-LINE FUSE.
12. FUSING SHALL BE PER COA L104.
13. FOOTING (FOUNDATION) CONCRETE MIX SHALL BE MINIMUM OF 560-C-3250.
14. DESIGNER SHALL USE APPROPRIATE PHOTOMETRIC SOFTWARE TO CONFIRM IES GUIDELINES ARE FOLLOWED PRIOR TO STREETLIGHT INSTALLATION.

ITEM	QTY	DESCRIPTION	IDENTIFICATION OR CAT. NO.	ANAHEIM STOCK CODE	COMPATIBLE UNITS	
1	1	POLE AND ANCHOR BOLTS (FOR MOUNTING SINGLE SQUARE RECTLINEAR ARM)	AMERON DWG NO. 1910-056, REV A		MA8SANTDEV	
	1	SQUARE RECTLINEAR ARM				
2	1	RECTLINEAR LUMINAIRE 100 WATTS HPS EQUAL	LED	SEE STOCK CODE	474046	L100LEDRECT
3	1	RECTLINEAR LUMINAIRE 250 WATTS HPS EQUAL		SEE STOCK CODE	474051	L200LEDRECT

FILENAME: L146 REV 0

<b>CITY OF ANAHEIM</b> PUBLIC UTILITIES DEPARTMENT ELECTRICAL DIVISION T&D CONSTRUCTION STANDARDS	REVISION KEYS:  ADDED / REVISED TEXT  ADDED / REVISED MATERIAL	NEW SHEET <input type="checkbox"/> NEW SHEET <input type="checkbox"/>
	<b>CITY OF ANAHEIM</b> <b>STREET LIGHT DESIGN #740</b> <b>CELL SITE TOP</b>	
	REVISION NO. <b>0</b> ISSUE DATE: <b>01-06-2020</b> SHEET <b>3</b> OF <b>3</b> CONSTRUCTION STANDARD: <b>L 148</b>	
APPROVALS		
SR ELEC ENG. <b>Ry</b>	T&D MGR <b>EB</b>	SYS PLN MGR <b>N/A</b>
OPS MGR <b>DA</b>	SUB MAINT <b>N/A</b>	