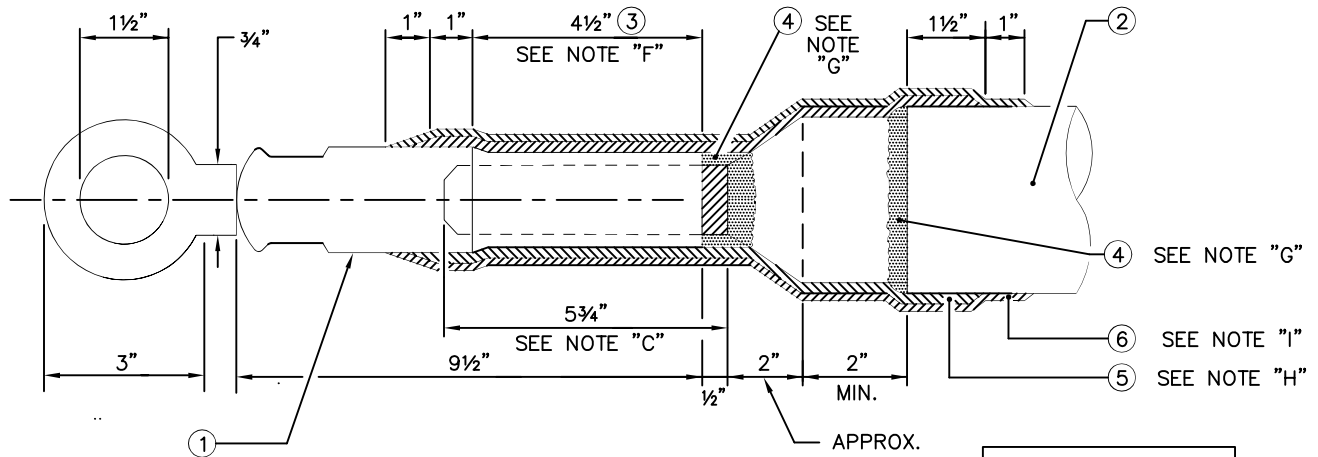


SCOPE: THIS STANDARD SHOWS PULLING EYE, COMPRESSION, FOR SINGLE CONDUCTOR ALUMINUM OR COPPER CABLES.



- ① PULLING EYE, SEE TABLE FOR REQUIRED SIZE AND PART NUMBER
- ② 1/C U.G. CABLE, XLPE
- ③ CRIMPING AREA.
- ④ ELECTRICAL MASTIC – (PLY SEAL, ELECTO SEAL, AQUA SEAL).
- ⑤ TAPE, SCOTCH NO. 23, 1" WIDE.
- ⑥ TAPE, SCOTCH NO. 50 (SCOTCH RAP), 2" WIDE.

**ULTIMATE LOAD
26,000 LBS**

CABLE SIZE	MANUFACTURERS CATALOG NO.	DIE SIZE				MAXIMUM TENSION	ANAHEIM PART NO.	COMPATIBLE UNIT
		ALCOA	BURNDY	KEARNEY	T & B			
2000kCML*	UTILITIES IND., INC. MPE-200S	34AH	F-46AR	1-7/8	74514	16,000 LBS	444175	CBL2000EYE

* = ALL PURPOSE CONDUCTOR OD 1.574"-1.614"

INSTALLATION NOTES:

- (A) REMOVE CABLE JACKETING A MIN. OF 9 3/4".
- (B) CUT-OFF SHIELDING WIRES AT JACKETING.
- (C) REMOVE 5 3/4" OF INSULATION.
- (D) TAPER INSULATION DOWN TO OUTSIDE DIAMETER OF PULLING EYE.
- (F) CRIMP USING 40 TON PRESS AND APPROPRIATE DIE (SEE TABLE), TAKE CARE TO PRESS ONLY FROM THE CIRCUMFERENTIAL CRIMP MARK AND IN THE DIRECTION OF THE ARROW MARKED ON THE BARREL OF THE PULLING EYE.
- (G) APPLY ELECTRICAL MASTIC ④ (PLY SEAL, ELECTRO SEAL, AQUA SEAL) TO AREAS INDICATED.
- (H) APPLY 2-HALF LAP LAYERS OF 1" SCOTCH NO. 23 TAPE ⑤ TO AREA INDICATED, PULL TO ONE HALF WIDTH.
- (I) APPLY 2-HALF LAP LAYERS OF SCOTCH NO. 50 SCOTCHRAP 2" VINYL TAPE ⑥ TO AREA INDICATED.

FILENAME: CU1700-35 REV4

CITY OF ANAHEIM PUBLIC UTILITIES DEPARTMENT ELECTRICAL DIVISION T&D CONSTRUCTION STANDARDS	REVISION KEYS:	ADDED / REVISED TEXT	ADDED / REVISED MATERIAL	NEW SHEET
	PULLING EYE, COMPRESSION, FOR SINGLE CONDUCTOR ALUMINUM OR COPPER U.G. CABLE			
APPROVALS T&D MGR FIELD MGR OPER. MGR 		REVISION NO. 4 ISSUE DATE: 01-08 SHEET 1 OF 1 CONSTRUCTION STANDARD: CU 1700-35		