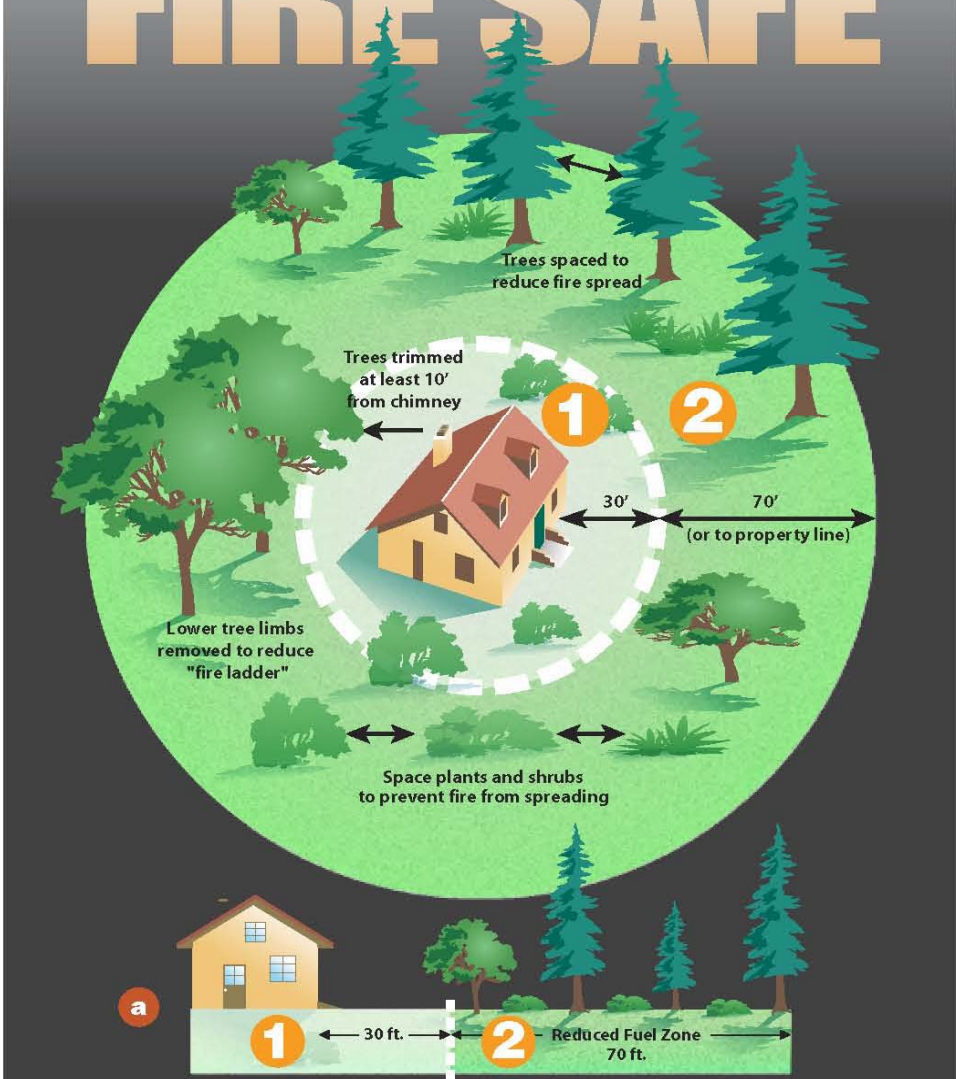


100' DEFENSIBLE SPACE Make Your Home FIRE SAFE



Why 100 Feet?

Following these simple steps can dramatically increase the chance of your home surviving a wildfire?

A **Defensible Space** of 100 feet around your home is required by law. The goal is to protect your home while providing a safe area for firefighters.

1. "Lean, Clean and Green Zone."

Clearing an area of 30 feet immediately surrounding your home is critical. This area requires the greatest reduction in flammable vegetation.

2. "Reduced Fuel Zone."

The fuel reduction zone in the remaining 70 feet (or to property line) will depend on the steepness of your property and the vegetation.

Spacing between plants improves the chance of stopping a wildfire before it destroys your home.

- 🌲 Create horizontal and vertical spacing between plants. The amount of space will depend on how steep the slope is and the size of the plants.
- 🌲 When clearing vegetation, use care when operating equipment such as lawnmowers. One small spark may start a fire; a string trimmer is much safer.
- 🌲 Remove all build-up of needles and leaves from your roof and gutters.
- 🌲 Keep tree limbs trimmed at least 10 feet from any chimneys and remove dead limbs that hang over your home or garage.
- 🌲 Provide a spark arrester for all chimneys used in conjunction with fireplaces. Spark arresters should be constructed with heavy metal or non-combustible openings not to exceed 1/2".
- 🌲 Address signs should be plainly visible and legible from the street or roadway.
- 🌲 Clear all weeds, grass, and flammable vegetation to provide a 10 foot clearance around liquefied propane gas tanks.

Plant Spacing Guidelines

These guidelines are designed to break the continuity of fuels and be used as a "rule of thumb."

Trees	Minimum horizontal space from edge of one tree canopy to the edge of the next	
	Slope	Spacing
	0% to 20 %	10 feet
	20% to 40%	20 feet
	Greater than 40%	30 feet
Shrubs	Minimum horizontal space between edges of shrub	
	Slope	Spacing
	0% to 20 %	2 times the height of the shrub
	20% to 40%	4 times the height of the shrub
	Greater than 40%	6 times the height of the shrub
Vertical Space	Minimum vertical space between top of shrub and bottom of lower tree branches: 3 times the height of the shrub	



Contact the City of Anaheim Fire Department for assistance at 714-765-4040