

SPECIE RECOMMENDATION BY STREET

SANTA ANA CANYON ROAD / E - PARKWAY & TREE WELLS

Primary Existing Species: *Eucalyptus globulus* *
BLUE GUM *

RECOMMENDATIONS:

Canopy: *Eucalyptus sideroxylon*
RED IRONBARK



evergreen

Magnolia g. 'Majestic Beauty'
MAJESTIC BEAUTY MAGNOLIA



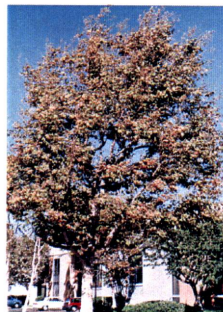
evergreen

Accent: *Lophostemon confertus*
BRISBANE BOX



evergreen

Syagrus romanzoffianum
LONDON PLANE TREE



deciduous

Flowering: *Calodendrum capense*
CAPE CHESTNUT



semi

Bauhinia variegata
PURPLE ORCHID TREE



semi

* NOTE: *Blue Gum* is no longer an approved City tree