



# City of Anaheim

## Census 2000 Demographic Profile I

---

### Public Law Summary File

January 2002

Table of Contents

| Section                                      | Page |
|--|------|
| 1. Introduction and Summary of Findings..... | 1    |
| 2. Population .....                          | 5    |
| 3. Age.....                                  | 8    |
| 4. Race and Ethnicity.....                   | 11   |
| 5. Housing.....                              | 14   |

List of Tables

| Table  | Page |
|--|------|
| 1. Population Change for the Ten Largest Cities in California: 1990 to 2000.....   | 5    |
| 2. Population Change for the Ten Fastest Growing Cities in the United States<br>with Population over 300,000: 1990 to 2000 ..... | 6    |
| 3. Anaheim Population by Age: 1970 to 2000 .....   | 9    |
| 3. Race and Ethnic Population for California, Orange County and Anaheim:<br>2000 .....   | 12   |
| 5. Anaheim Race and Ethnic Changes: 1990 to 2000 .....   | 12   |
| 6. Anaheim Housing Occupancy: 1990 to 2000.....  | 14   |
| 7. Anaheim Housing Tenure: 1990 to 2000 .....  | 16   |

List of Figures

| Figure   | Page |
|--|------|
| 1. City of Anaheim Vicinity Map .....  | 2    |
| 2. Anaheim Population: 1950 to 2000 .....  | 5    |
| 3. Percent Population Change: 1950 to 2000.....  | 7    |
| 4. Median Age .....  | 8    |
| 5. Percent of Population for Orange County and Anaheim: 2000 .....   | 8    |
| 6. Anaheim Population Under Age 18: 2000 .....   | 10   |
| 7. Anaheim Race and Ethnic Characteristics: 1990 to 2000.....  | 11   |
| 8. Anaheim Ethnic Diversity: 2000.....   | 13   |
| 9. Anaheim Housing Units: 1950 to 2000 .....   | 14   |
| 10. Persons per Household: 1960 to 2000 .....  | 14   |
| 11. Relationship of Persons in Households: 1990 to 2000.....   | 15   |
| 12. Proportion of Households: 1990 to 2000 .....   | 15   |
| 13. Percent of Owner Occupied and Renter Occupied Housing for California,<br>Orange County and Anaheim: 2000 ..... | 16   |

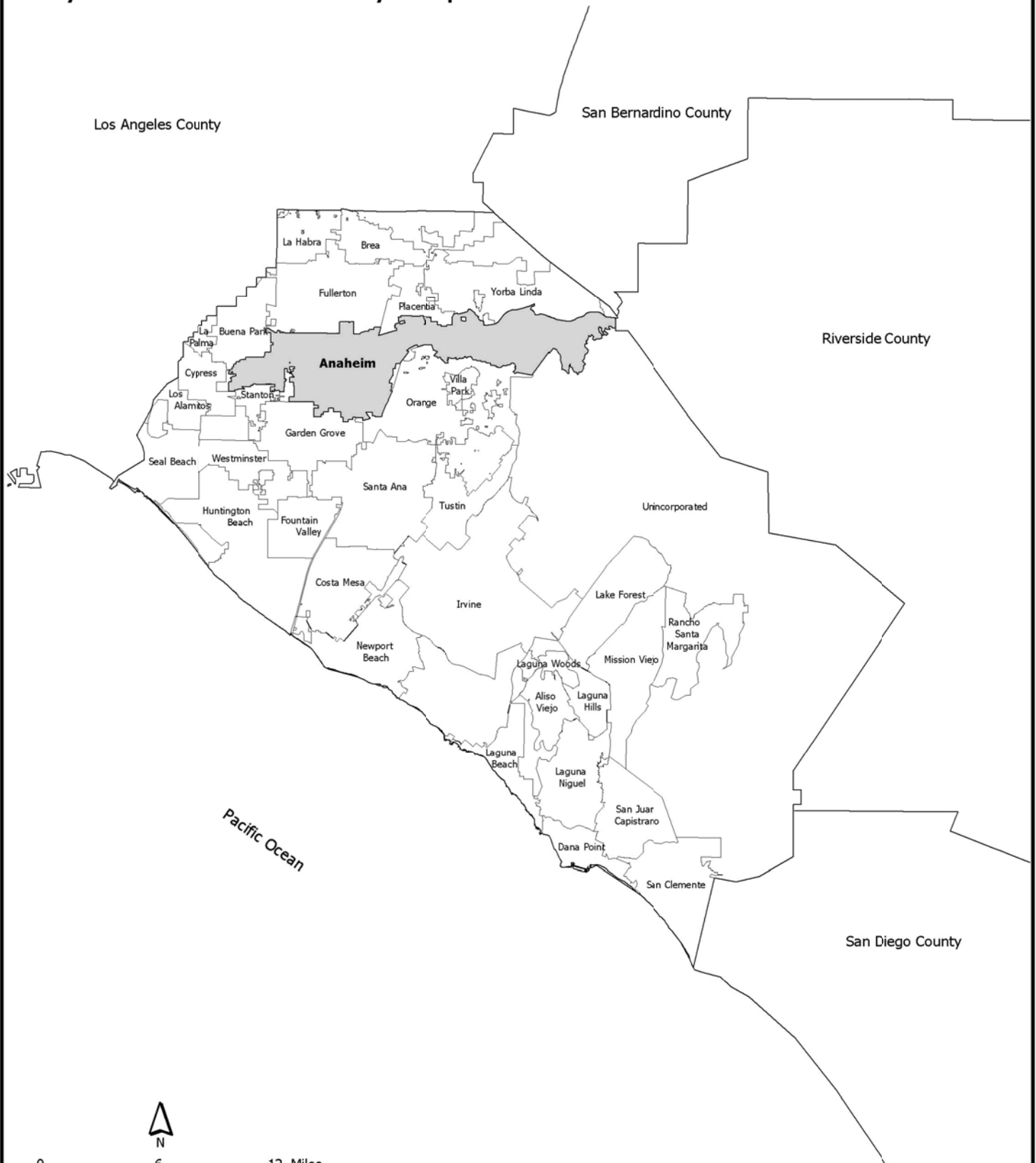
## ***Section I: Introduction and Summary of Findings***

The City of Anaheim is located in Central Orange County, 35 miles southeast of downtown Los Angeles and 7 miles northwest of Santa Ana (see Figure 1). At the time of its incorporation in 1876, Anaheim was 2.6 square miles. Today, the City encompasses 50 square miles of land. Anaheim is often noted as the home of Disneyland, but also hosts the California Angels, the Anaheim Mighty Ducks and is home to the Anaheim Convention Center.

Recent releases of data from Census 2000 begin to provide a glimpse of Anaheim's social and demographic fabric both as it is today, but also what it was in the past and as it may be in the future. Demographic patterns generally follow a steady and predictable course. Thus, looking at today's patterns and characteristics can tell us a good deal about tomorrow's.

Anaheim's Census 2000 Demographic Profile I is the first of four demographic profiles for the City. Profiles I, II and III will primarily report on population and socio-economic data collected in Census 2000. Profile I profiles the population, age, racial and ethnic composition and housing characteristics in the City of Anaheim. It is based on the Census 2000 Redistricting Data (Public Law 94-171) Summary file, which was the first Census 2000 data product to be released and The Profile of General Demographic Characteristics: 2000 provided by the U.S. Census Bureau. Profile II will profile the Summary File 1 data release, which will include population information on race, age, sex, household relationship and owner-renter information. Profile III will profile the Summary File 3 data release that will include additional population and housing information including education levels, income and cost of housing. Analysis, where possible, will be included in these first three profiles. Detailed analysis of the data and projections or forecasts will be provided in Profile IV, the final report.

# Figure 1 City of Anaheim Vicinity Map



## **Summary of Findings:**

The following is a summary of the findings presented in detail in the subsequent sections of this profile.

### **Population (Section II)**

- ❑ According to the U.S. Census Bureau, Anaheim's population was 328,014 on April 1, 2000.
- ❑ The City is the 10th largest city in California and 56th in the United States.
- ❑ The City grew by 61,608 people, or 23%, between 1990 and 2000.
- ❑ The growth rate in Anaheim (23%) was the highest among the ten largest cities in California and 8th highest among cities nationally with a population over 300,000.
- ❑ The increase in population occurred in both areas of new development and in established areas of the City.
- ❑ Both residents moving into the City and natural increase (births) contributed to the population growth.

### **Age (Section III)**

- ❑ Anaheim has a younger median age at 30.2 years than the County (33.3), State (33.3) and Nation (35.3).
- ❑ The percent of the population under the age of 14 is the 4th highest in the County behind Rancho Santa Margarita, Santa Ana and Stanton.
- ❑ The largest age group in Anaheim is the 25 to 34 years age group, while the County's is the 35 to 44 years age group.
- ❑ Since 1970, the senior population (65 years and older) has more than doubled.

### **Race and Ethnicity (Section IV)**

- ❑ No one racial or ethnic group makes up a majority in the City of Anaheim.
- ❑ Hispanics or Latinos make up 46.8% of the City's population and is the largest single racial or ethnic group.
- ❑ The Hispanic or Latino, Asian, and Black or African American populations combined make up 61.1% of Anaheim's population.
- ❑ Anaheim has the 2nd largest Hispanic or Latino population in the County – Santa Ana has the largest.
- ❑ The largest Black or African American population group in the County is in Anaheim (7,939 people).
- ❑ All racial and ethnic groups increased in population in Anaheim except the Non-Hispanic White population, which experienced a decrease of 22%, from 57% to 37%.
- ❑ Anaheim's population is extremely diverse throughout the community with the exception of one area in central Anaheim which is predominantly Hispanic or Latino and an area in the City's Hill and Canyon Area which is predominantly White.

## **Housing (Section V)**

- ❑ The Census has identified 99,719 housing units in Anaheim, an increase of over 6,500 units since 1990.
- ❑ Vacancy rates in housing decreased from 6.0% in 1990 to 2.8% in 2000, dropping the number of vacant units to 2,750.
- ❑ The number of persons in each household increased from 2.7 in 1990 to 3.3 in 2000. This is the highest recorded number of persons per household since the 1960 Census in the height of the Baby Boom.
- ❑ Between 1990 and 2000, the number of family households (householder, spouse and own children) remained high (73%), however, there was an increase in the proportion of non-family households from 19% to 27%.
- ❑ Owner occupied housing increased from 49.2% of households to 50% of households while renter occupied decreased from 50.8% to 50%.
- ❑ The ratio of owner-occupied units in Anaheim (50%) is lower than the State (56.9%) and the County (61.4%).

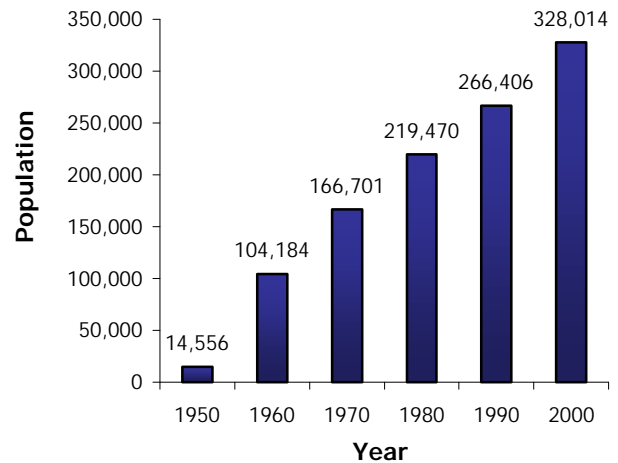
## Section II: Population

Anaheim's population reached 328,014 as of April 1, 2000. This represents an addition of 61,608 residents since the 1990 U.S. Census. Statewide, Anaheim ranks as the 10th largest city in California. Nationally, Anaheim ranks 56th and is similar in size to such cities as Tampa, FL; Toledo, OH; Cincinnati, OH; Arlington, TX; Pittsburgh, PA; Wichita, KN; and St. Louis, MO.

The 2000 Census illustrates that Anaheim continues to experience high levels of growth (Figure 2). During the 1990's, the population grew by twenty-three percent (23%). Looking at Anaheim's past growth, this decade of growth is only surpassed numerically by the two decades between 1950 and 1970 when Anaheim grew from a small city of 14,500 to 166,700. This has occurred despite a shrinking supply of undeveloped land and a prolonged recession between 1990 and 2000.

Anaheim is a growth leader both in California and the United States. Anaheim's growth rate is the highest among the ten largest cities in California (Table 1) and eighth highest among all cities nationally with a population over 300,000 (Table 2).

Figure 2  
Anaheim Population: 1950 to 2000



Source: U.S. Census Bureau, Census 2000 Redistricting Data (Public Law 94-171) Summary File; 1950 to 1990 Census of Population

Table 1  
Population Change for the Ten Largest Cities in California: 1990 to 2000

| Area               | Population     |                | Change 1990 to 2000 |             |
|--------------------|----------------|----------------|---------------------|-------------|
|                    | April 1, 1990  | April 1, 2000  | Number              | Percent     |
| <b>Anaheim, CA</b> | <b>266,406</b> | <b>328,014</b> | <b>61,608</b>       | <b>23.1</b> |
| Fresno             | 354,202        | 427,652        | 73,450              | 20.7        |
| Santa Ana          | 293,742        | 337,977        | 44,235              | 15.1        |
| San Jose           | 782,248        | 894,943        | 112,695             | 14.4        |
| Sacramento         | 369,365        | 407,018        | 37,653              | 10.2        |
| San Diego          | 1,110,549      | 1,223,400      | 112,851             | 10.2        |
| Long Beach         | 429,433        | 461,522        | 32,089              | 7.5         |
| Oakland            | 372,242        | 399,484        | 27,242              | 7.3         |
| San Francisco      | 723,959        | 776,733        | 52,774              | 7.3         |
| Los Angeles        | 3,485,398      | 3,694,820      | 209,422             | 6.0         |

Source: U.S. Census Bureau, Census 2000 Redistricting Data (Public Law 94-171) Summary File; 1990 Census of Population

Table 2  
Population Change for the Ten Fastest Growing Cities in the United States with Population over 300,000: 1990 to 2000

| Area                 | Population     |                | Change 1990 to 2000 |             |
|----------------------|----------------|----------------|---------------------|-------------|
|                      | April 1, 1990  | April 1, 2000  | Number              | Percent     |
| Las Vegas, NV        | 258,295        | 478,434        | 220,139             | 85.2        |
| Austin, TX           | 465,622        | 656,562        | 190,940             | 41.0        |
| Mesa, AZ             | 288,091        | 396,375        | 108,284             | 37.6        |
| Charlotte, NC        | 395,934        | 540,828        | 144,894             | 36.6        |
| Phoenix, AZ          | 983,403        | 1,321,045      | 337,642             | 34.3        |
| Colorado Springs, CO | 281,140        | 360,890        | 79,750              | 28.4        |
| Arlington, TX        | 261,721        | 332,969        | 71,248              | 27.2        |
| <b>Anaheim, CA</b>   | <b>266,406</b> | <b>328,014</b> | <b>61,608</b>       | <b>23.1</b> |
| San Antonio, TX      | 935,933        | 1,144,646      | 208,713             | 22.3        |
| Portland, OR         | 437,319        | 529,121        | 91,802              | 21.0        |

Source: U.S. Census Bureau, Census 2000 Redistricting Data (Public Law 94-171) Summary File; 1990 Census of Population

Population growth in cities is normally influenced by one of three factors, new development, natural increase and immigration. Anaheim is unique among many cities in that its growth is the result of all three factors, people moving into the City from other places (immigration), natural increase (births) and new development. As shown in Figure 3, much of the growth occurred in the City's Hill and Canyon Area where land was available for new residential development. However, several other areas of the City experienced noticeable levels of growth. These include areas in the central and western portions of Anaheim where housing was primarily built out and occupied by 1990.

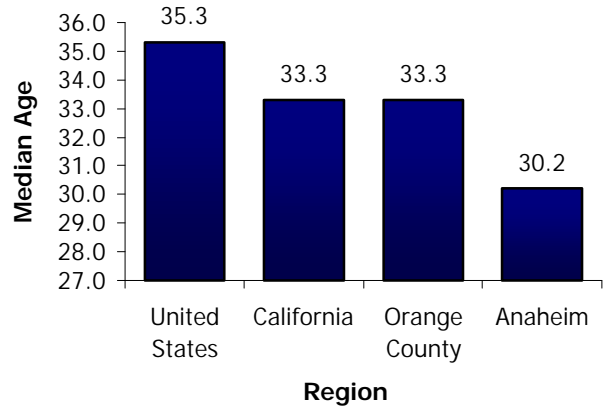
The reasons for the growth in the developed areas of Anaheim are very different than those of the City's Hill and Canyon Area. New development in the City's Hill and Canyon Area has primarily attracted new residents. Natural increase plays a more dominant role in the growth of the other areas of Anaheim. Five census tracts in the area west of the City's Hill and Canyon Area each grew by over 2,000 people between 1990 and 2000. Between 1990 and 1998, over 9,300 births were recorded to residents in these census tracts. During that time period, births accounted for over 86% of all the growth (Source: Center for Demographic Research). Domestic migration and immigration into these areas played a much lesser role in the population increase.

Figure 3.  
Percent Population Change: 1990 to 2000 (Map) - [click here](#)

## Section III: Age

Anaheim's population is young compared to the County, State and Nation. The median age in Anaheim is 30.2, while it is 33.3 in Orange County and California and 35.3 in the United States (Figure 4). In Orange County, only two cities, Santa Ana (26.5) and Stanton (30.0), have a median age less than Anaheim's. When comparing the percentage of population under age 14 to other jurisdictions in Orange County, Anaheim (26.0%) ranks 4th behind Rancho Santa Margarita (29.7%), Santa Ana (29.3%) and Stanton (26.2%).

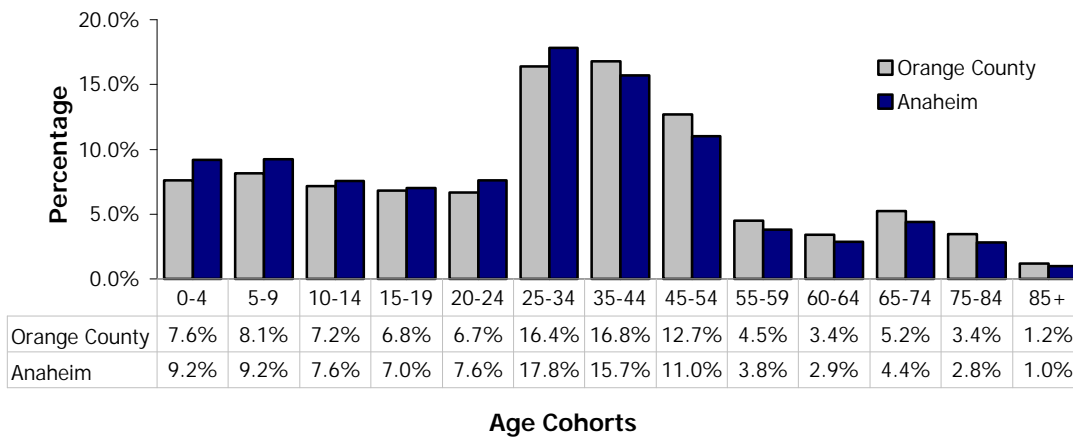
Figure 4  
 Median Age: 2000



Source: U.S. Census Bureau, Census 2000 Redistricting Data (Public Law 94-171) Summary File

Another important feature of the age structure in Anaheim is that the "25 to 34 years" age group is the largest of the adult groups while the "35 to 44 years" age group is the largest in Orange County (Figure 5).

Figure 5  
 Percent of Population for Orange County and Anaheim: 2000



Source: U.S. Census Bureau, Census 2000 Redistricting Data (Public Law 94-171) Summary File

Table 3 shows that over the past thirty years the population of Anaheim nearly doubled rising from 166,701 in 1970 to 328,014 in 2000. Although the population increased 96.8%, the increase has not been equal across all age groups. One notable change is in the 75+ group. This group grew 215.6% over the thirty-year time span, increasing from 3,926 in 1970 to 12,390 in 2000. The 25 to 34 age group also experienced significant growth (159.4%). This group has remained the single largest cohort for each Census year.

Another notable demographic trend that is occurring in Anaheim is the aging of the population groups that are associated with the urbanization of Anaheim during the 1950's through 1975. With the exception of the "0 to 4" age group, the majority of the growth has taken place in the population ages 25 and over.

Table 3  
Anaheim Population by Age: 1970 to 2000

| Age           | 1970    | 1980    | 1990    | 2000    | 1970 to 2000 Change |         | Average Annual Increase |
|---------------|---------|---------|---------|---------|---------------------|---------|-------------------------|
|               |         |         |         |         | Numeric             | Percent |                         |
| 0-4           | 14,033  | 16,006  | 22,905  | 30,206  | 16,173              | 115.2%  | 539                     |
| 5-9           | 16,129  | 14,801  | 19,146  | 30,282  | 14,153              | 87.7%   | 472                     |
| 10-14         | 17,764  | 15,806  | 16,607  | 24,837  | 7,073               | 39.8%   | 236                     |
| 15-19         | 16,585  | 20,332  | 18,890  | 22,959  | 6,374               | 38.4%   | 212                     |
| 20-24         | 15,686  | 25,974  | 26,722  | 25,020  | 9,334               | 59.5%   | 311                     |
| 25-34         | 22,523  | 40,304  | 55,912  | 58,417  | 35,894              | 159.4%  | 1,196                   |
| 35-44         | 22,273  | 25,575  | 38,382  | 51,578  | 29,305              | 131.6%  | 977                     |
| 45-54         | 20,746  | 23,581  | 25,641  | 36,063  | 15,317              | 73.8%   | 511                     |
| 55-64         | 10,808  | 19,945  | 19,909  | 21,879  | 11,071              | 102.4%  | 369                     |
| 65-74         | 6,228   | 10,081  | 13,678  | 14,383  | 8,155               | 130.9%  | 272                     |
| 75+           | 3,926   | 6,906   | 8,614   | 12,390  | 8,464               | 215.6%  | 282                     |
| <b>Total:</b> | 166,701 | 219,311 | 268,396 | 328,014 | 161,313             | 96.8%   | 5,377                   |

Source: U.S. Census Bureau, Census 2000 Redistricting Data (Public Law 94-171) Summary File; 1970 to 1990 Census of Population

Consistent with national trends between 1990 and 2000, the "baby boom" cohorts grew as this segment of the population aged. Both the "35 to 44 Years" and the "45 to 54 Years" age groups experienced the most growth during the 1990's. Together these two age groups added over 23,000 people. Considerable growth also occurred in the youth cohorts. The population ages 0-17 grew nearly 30,000 persons between 1990 and 2000. This is the result of high levels of fertility among the population that reside in many of the central and western areas in Anaheim. This is clearly depicted in Figure 6. The areas with the largest number of youths are concentrated in the central and western portions of Anaheim.

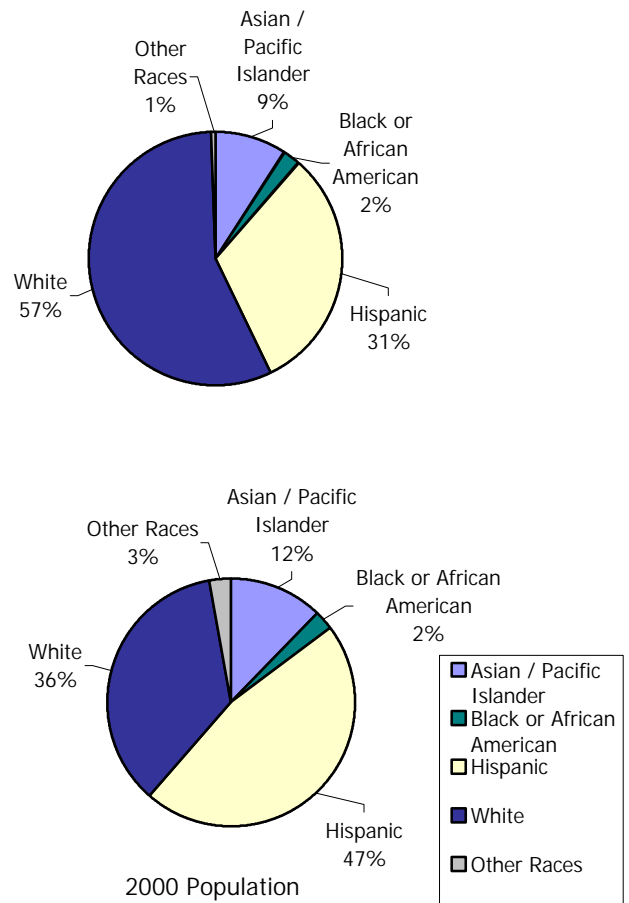
Figure 6.  
Anaheim Population Under Age 18: 2000 - [Click here](#)

## Section IV: Race and Ethnicity

Census 2000 marks a major milestone in the continuing racial and ethnic diversification of Anaheim. Between 1990 and 2000, the racial and ethnic make-up of Anaheim underwent significant changes. As of 2000, no one racial or ethnic group is a majority (Figure 7). This is similar to eight other cities in Orange County: Buena Park, Fullerton, Garden Grove, La Habra, La Palma, Stanton, Tustin and Westminster.

Asians, African Americans or Blacks and Hispanics or Latinos combined now represent the majority of Anaheim's population. Together, they represent 61.1% of the population of Anaheim. In fact, Hispanics or Latinos are the largest single ethnic group (46.8%). Currently, Anaheim has the second largest Hispanic or Latino population in Orange County, behind the City of Santa Ana (257,097). Table 4 shows that Anaheim also has a higher percentage of a Hispanic or Latino population (46.8%) compared to Orange County (30.8%) and the State of California (32.4%).

Figure 7  
 Anaheim's Race and Ethnic Characteristics: 1990 to 2000



Source: U.S. Census Bureau, Census 2000 Redistricting Data (Public Law 94-171) Summary File; 1990 Census of Population

In Anaheim, the 2000 Census indicates that during the 1990's all racial and ethnic groups experienced growth except for the Non-Hispanic White population, which decreased by 33,267 or 22% (Table 5) though still retained 36% of the total population. The Hispanic or Latino group is the fastest growing ethnic group (83.1%), followed by the Asian and Pacific Islander groups (66.8%).

Table 5 also shows that the Black or African American group experienced considerable growth (26.0%). The largest Black or African American population in Orange County is now in Anaheim (7,939). Prior to 2000, Santa Ana had the largest population, but is now at only 4,309.

Table 4  
Race and Ethnic Population for California, Orange County and Anaheim: 2000

|                                   | California        |            | Orange County    |            | Anaheim        |            |
|-----------------------------------|-------------------|------------|------------------|------------|----------------|------------|
|                                   | Population        | Percent    | Population       | Percent    | Population     | Percent    |
| <b>Hispanic or Latino</b>         | 10,966,556        | 32.4       | 875,579          | 30.8       | 153,374        | 46.8       |
| <b>White*</b>                     | 15,816,790        | 46.7       | 1,458,978        | 51.3       | 117,607        | 35.9       |
| <b>Black or African American*</b> | 2,181,926         | 6.4        | 42,639           | 1.5        | 7,939          | 2.4        |
| <b>American Indian*</b>           | 178,984           | 0.5        | 8,414            | 0.3        | 1,049          | 0.3        |
| <b>Asian*</b>                     | 3,648,860         | 10.8       | 383,810          | 13.5       | 38,919         | 11.9       |
| <b>Pacific Islander*</b>          | 103,736           | 0.3        | 8,086            | 0.3        | 1,263          | 0.4        |
| <b>All Other Races*</b>           | 71,681            | 0.2        | 4,525            | 0.2        | 457            | 0.1        |
| <b>Multiracial</b>                | 903,115           | 2.7        | 64,258           | 2.3        | 7,406          | 2.3        |
| <b>Total Population</b>           | <b>33,871,648</b> | <b>100</b> | <b>2,846,289</b> | <b>100</b> | <b>328,014</b> | <b>100</b> |

\*Not Hispanic or Latino

Source: U.S. Census Bureau, Census 2000 Redistricting Data (Public Law 94-171) Summary File

Another way to analyze the diversity that is taking place in Anaheim is by examining the degree to which different ethnic groups are living in the same area. Areas where ethnic groups are mixed within a defined residential area are described as ethnically diverse. The statistic commonly used to calculate diversity in places is the entropy index. The entropy index measures the relative evenness in the proportion of five groups, Non-Hispanic Whites, Non-Hispanic Blacks or African Americans, Non-Hispanic Asians, Hispanics or Latinos and all other races, within census blocks. If there were equal numbers of all five groups within a block, the diversity index would equal 2 (maximum diversity possible). If a block contained people from only one group the diversity index would be zero (lowest possible diversity).

Table 5  
Anaheim Race and Ethnic Changes: 1990 to 2000

|                                   | Population     |                | Change        |              |
|-----------------------------------|----------------|----------------|---------------|--------------|
|                                   | 1990           | 2000           | Number        | Percent      |
| <b>American Indian*</b>           | 996            | 1,049          | 53            | 5.3%         |
| <b>Asian*</b>                     | 23,326         | 38,919         | 15,593        | 66.8%        |
| <b>Black or African American*</b> | 6,302          | 7,939          | 1,637         | 26.0%        |
| <b>Hispanic or Latino</b>         | 83,755         | 153,374        | 69,619        | 83.1%        |
| <b>Pacific Islander*</b>          | 757            | 1,263          | 506           | 66.8%        |
| <b>White*</b>                     | 150,874        | 117,607        | -33,267       | -22.0%       |
| <b>Other Races*</b>               | 396            | 457            | 61            | 15.4%        |
| <b>Multiracial</b>                | n/a            | 7,406          | 7,406         | n/a          |
| <b>Total Population</b>           | <b>266,406</b> | <b>328,014</b> | <b>61,608</b> | <b>23.1%</b> |

\*Not Hispanic or Latino

n/a: Multiracial reporting option not available in 1990.

Source: U.S. Census Bureau, Census 2000 Redistricting Data (Public Law 94-171) Summary File.

The areas with the higher values of the index were in western Anaheim and the central area of Anaheim, and some areas in the Hill and Canyon Area (Figure 8). It should be noted that the size of the blocks in the City's Hill and Canyon Area are geographically larger, because the population and street network is not as dense as it is in the central and western portion of Anaheim. There is an interesting contrast between the areas with lower values (less diverse) on the index. The two areas of low diversity are in central Anaheim, which has a large Hispanic population and in the City's Hill and Canyon Area that is predominantly White.

Figure 8.  
Anaheim Ethnic Diversity: 2000 (Map) - [Click here](#)

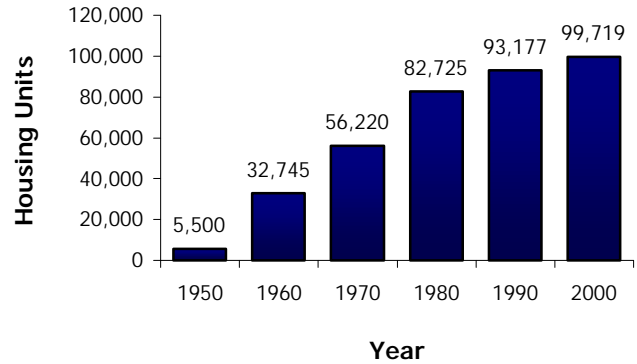
## Section V: Housing

Anaheim's housing was reported to be 99,719 units by the 2000 Census (Figure 9). This was an increase of over 6,500 housing units since the 1990 Census. Although Anaheim has remained a growth leader in housing throughout Orange County, the increase in units between 1990 and 2000 was the smallest in the past five decades, due in part, to decreasing supplies of vacant, developable land.

Even though over 6,500 housing units were added to the housing stock, the vacancy rate fell from 6.0% in 1990 to 2.8% in 2000. Along with the new housing units added between 1990 and 2000, the number of vacant units dropped from 5,589 in 1990 to 2,750 in 2000, representing an increase of 2,837 occupied units. Together this represents an increase of 9,381 occupied units in Anaheim (Table 6).

Despite the added number of dwelling units, Anaheim's average household size continues to rise. The average persons per household in Anaheim climbed to 3.3 in 2000, the highest recorded since the 1960 Census during the height of the "baby boom" (Figure 10). Several factors seem to be contributing to these phenomena. The fertility rates among foreign-born are higher. This has meant that there are typically more children in immigrant families. Many foreign born cultures also live in an extended family environment. Anaheim also has many established neighborhoods transitioning from older "householders" to younger "householders." With younger families have come more children. Children may also be staying with parents longer because of housing costs.

Figure 9  
 Anaheim Housing Units: 1950 to 2000



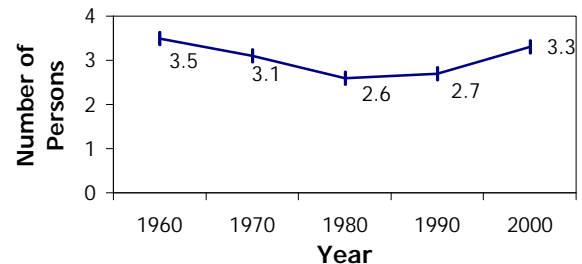
Source: U.S. Census Bureau, Census 2000 Redistricting Data (Public Law 94-171) Summary File; 1950 to 1990 Census of Population

Table 6  
 Anaheim Housing Occupancy: 1990 to 2000

|                               | 1990   | 2000   |
|-------------------------------|--------|--------|
| <b>Total Housing Units</b>    | 93,177 | 99,719 |
| <b>Occupied Housing Units</b> | 87,588 | 96,969 |
| <b>Vacant Housing Units</b>   | 5,589  | 2,750  |
| <b>Vacancy Rate</b>           | 6.0%   | 2.8%   |

Source: U.S. Census Bureau, Census 2000 Redistricting Data (Public Law 94-171) Summary File; 1990 Census of Population

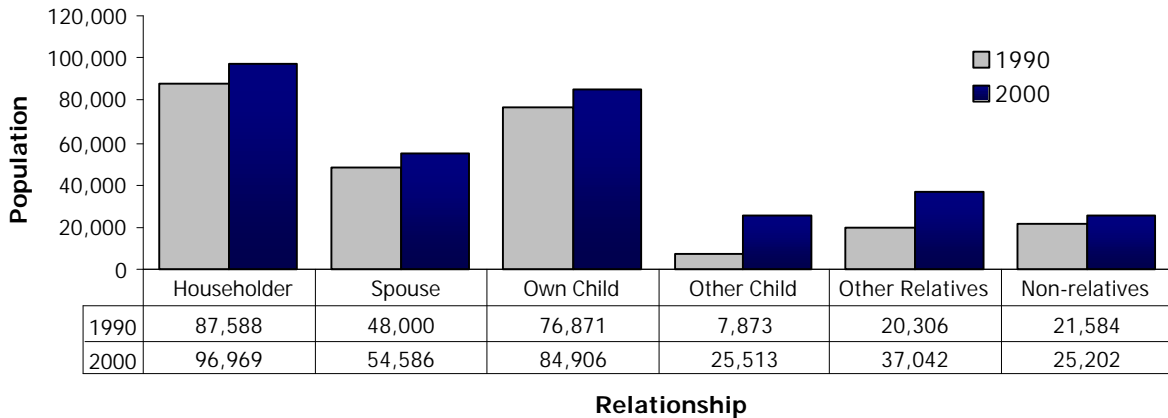
Figure 10  
 Persons per Household: 1960 to 2000



Source: U.S. Census Bureau, Census 2000 Redistricting Data (Public Law 94-171) Summary File; 1950 to 1990 Census of Population

The majority of persons in Anaheim households are the householder, the householder's spouse and the householder's children. Numerically, each household category increased between 1990 and 2000 (Figure 11). However, the proportion of householder, spouse and own children making up the household population declined, while the proportion of other relatives and other children increased (Figure 12).

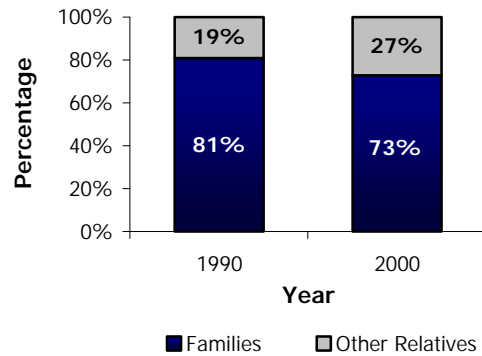
Figure 11  
Relationship of Persons in Households: 1990 to 2000



Source: U.S. Census Bureau, Census 2000 Redistricting Data (Public Law 94-171) Summary File; 1990 Census of Population

Both social and economic factors may explain the growth of other relatives and other children living in households. Socially, the growth of extended families goes hand-in-hand with the continuing racial and ethnic diversification of Anaheim. Grandparents, aunts, uncles and cousins, all fall into the "other relatives" and "other children" categories. A nationwide trend that may be present in Anaheim is the growing number of grandparents raising their grandchildren as is middle age children being caregivers to their elderly parents. The economics of housing is also resulting in more people sharing housing as was evidenced by the number of other family members in a household. Family members may be sharing housing as a way of meeting the growing cost of housing.

Figure 12  
Proportion of Households: 1990 to 2000



Source: U.S. Census Bureau, Census 2000 Redistricting Data (Public Law 94-171) Summary File; 1990 Census of Population

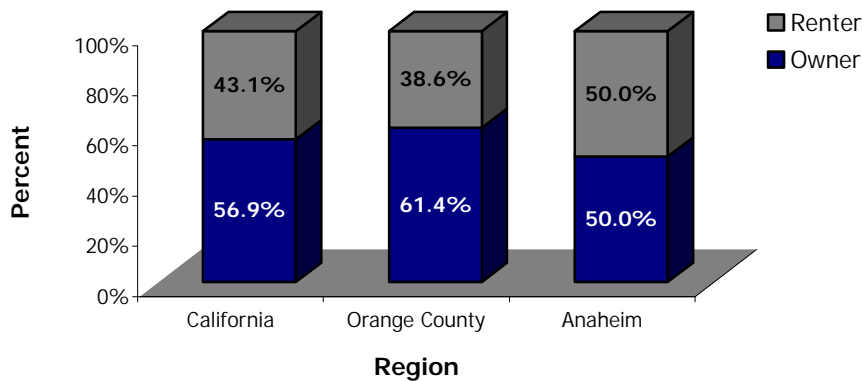
Anaheim was evenly split in 2000 between owner and renter occupied units. The City experienced a slight rise in owner-occupied housing (0.8%) from 1990. As of April 1, 2000, owner-occupied housing constitutes 50% of total occupied housing, up from 49.2% in 1990 (Table 7). Although Anaheim made a slight gain during the 1990's in the ratio of owner-occupied housing, it still has a lower percentage when compared to the 56.9% in the State of California and 61.4% in Orange County (Figure 13).

Table 7  
 Anaheim Housing Tenure: 1990 to 2000

|                             | 1990   |         | 2000   |         |
|-----------------------------|--------|---------|--------|---------|
|                             | Number | Percent | Number | Percent |
| <b>Owner-occupied</b>       | 43,123 | 49.2%   | 48,514 | 50.0%   |
| <b>Renter-occupied</b>      | 44,465 | 50.8%   | 48,455 | 50.0%   |
| <b>Total Occupied Units</b> | 87,588 | 100%    | 96,969 | 100%    |

Source: U.S. Census Bureau, Census 2000 Redistricting Data (Public Law 94-171) Summary File; 1990 Census of Population

Figure 13  
 Percent of Owner-Occupied and Renter-Occupied Housing for California, Orange County and Anaheim: 2000



Source: U.S. Census Bureau, Census 2000 Redistricting Data (Public Law 94-171) Summary File