



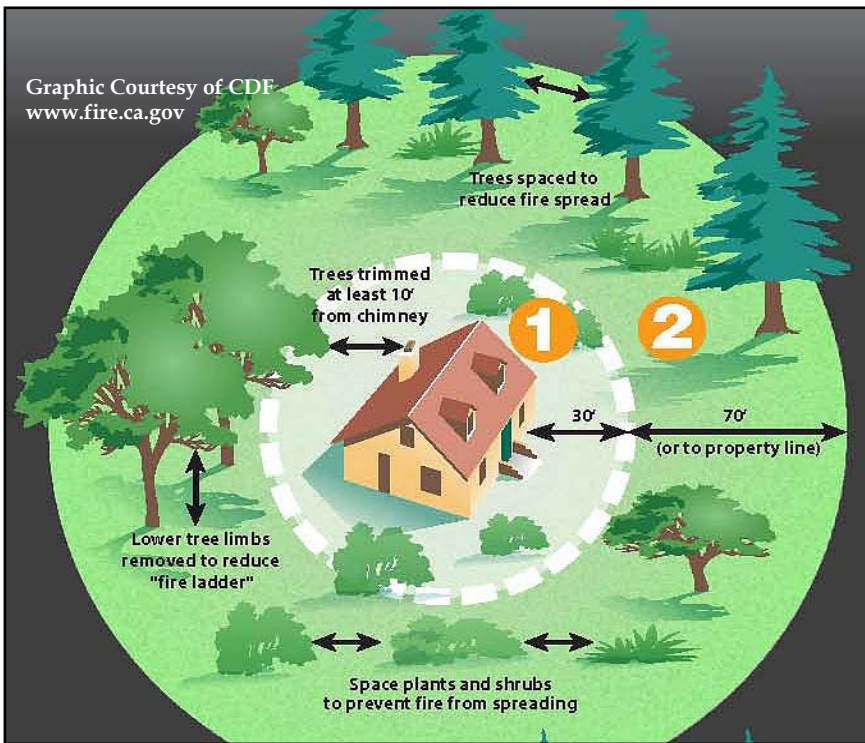
# Got Clearance? Protect Your Home & Family From Wildfires

[www.ocfa.org](http://www.ocfa.org)

Orange County homes located next to vegetation face a very real threat of wildfire. Homes in these areas must have either defensible space or a fuel modification program. Defensible space is a clear or sparsely planted area around your home. Fuel modification zones, for most homes built after 1980, are 170-foot buffer areas between homes and flammable vegetation. By maintaining fuel modification zones or defensible space, you are creating a fire break and you are providing firefighters with a place to take a stand while protecting your home from approaching flames.

## Clear a Defensible Space

- Clear all dead or flammable vegetation at least 30 feet from any structure.
- Thin vegetation within 70 feet; replace with fire resistant plants.
- Clear dead leaves and needles from roof and rain gutters.
- Space trees and shrubs at least 10 feet apart.
- Relocate woodpiles or other combustible materials at least 30 feet from any structure.
- Maintain a clear space of 10 feet around propane gas tanks.



## Fuel Modification

Fire-resistant plants can act as a firebreak and protect your home. The following is just a small list of fire resistant plants/shrubs:

- Aloe Vera
- Bird of Paradise
- Bouganvillea
- Cape Honeysuckle
- Citrus Trees
- English Ivy
- Ice Plant
- Indian Hawthorne
- Mondo Grass
- Prickly Pear
- Rosemary
- Star Jasmine
- Verbena
- Wild Strawberry

For a complete list of plants, fuel modification requirements, proper spacing and maintenance information, call the Orange County Fire Authority at (714) 573-6100.

## Harden the House

- 🔥 Install a ½ inch mesh screen over your chimney.
- 🔥 Remove all branches within ten feet of the chimney.
- 🔥 Install a ¼ inch mesh screen over gable and attic vents.
- 🔥 Select non-combustible roof & siding, and enclose all eaves.
- 🔥 Make sure your address number is visible from the street.
- 🔥 Consider installing residential fire sprinklers and dual pane glass.
- 🔥 Contact your local building official for assistance.

## Stop the Start of a Wildfire

Through the cooperative efforts of the OCFA, State and Federal fire service agencies, law enforcement, property owners and community groups, we can save lives and property.

- 🔥 To report suspicious activity, call Police or the **OCFA Arson Tip Line at (800) 540-8282**.
- 🔥 Keep an eye on children, who cause a large percentage of preventable fires.
- 🔥 Do not use fireworks in wildland areas, they are illegal.
- 🔥 Use extreme caution with BBQ's, welders, fireplaces, smoking materials and open flames.
- 🔥 Do not park cars in tall grass. The hot catalytic converter can ignite dry plant materials.
- 🔥 Spark arresters are required on gasoline, diesel and propane powered engines.
- 🔥 For fire danger levels and allowable activities in the Cleveland National Forest, call (619) 593-2183 or visit [www.fs.fed.us/r5/cleveland](http://www.fs.fed.us/r5/cleveland) and click on Fire & Aviation.



**This hardened home stands alone after a fire destroyed 365 neighboring homes. This home survived by clearing heavy vegetation from the slope as well as having non-combustible roof and siding.**

**Join the Canyon Clean Sweep  
June 2006. For more information,  
call (714) 573-6059.**

### For More Information

[www.firesafecouncil.org](http://www.firesafecouncil.org)  
[www.firewise.org](http://www.firewise.org)  
[www.ready.gov](http://www.ready.gov)  
[www.fs.fed.us/r5/cleveland](http://www.fs.fed.us/r5/cleveland)  
[www.fire.ca.gov](http://www.fire.ca.gov)  
[www.edis.ca.gov](http://www.edis.ca.gov)  
[www.usfa.gov](http://www.usfa.gov)  
[www.nfpa.org](http://www.nfpa.org)