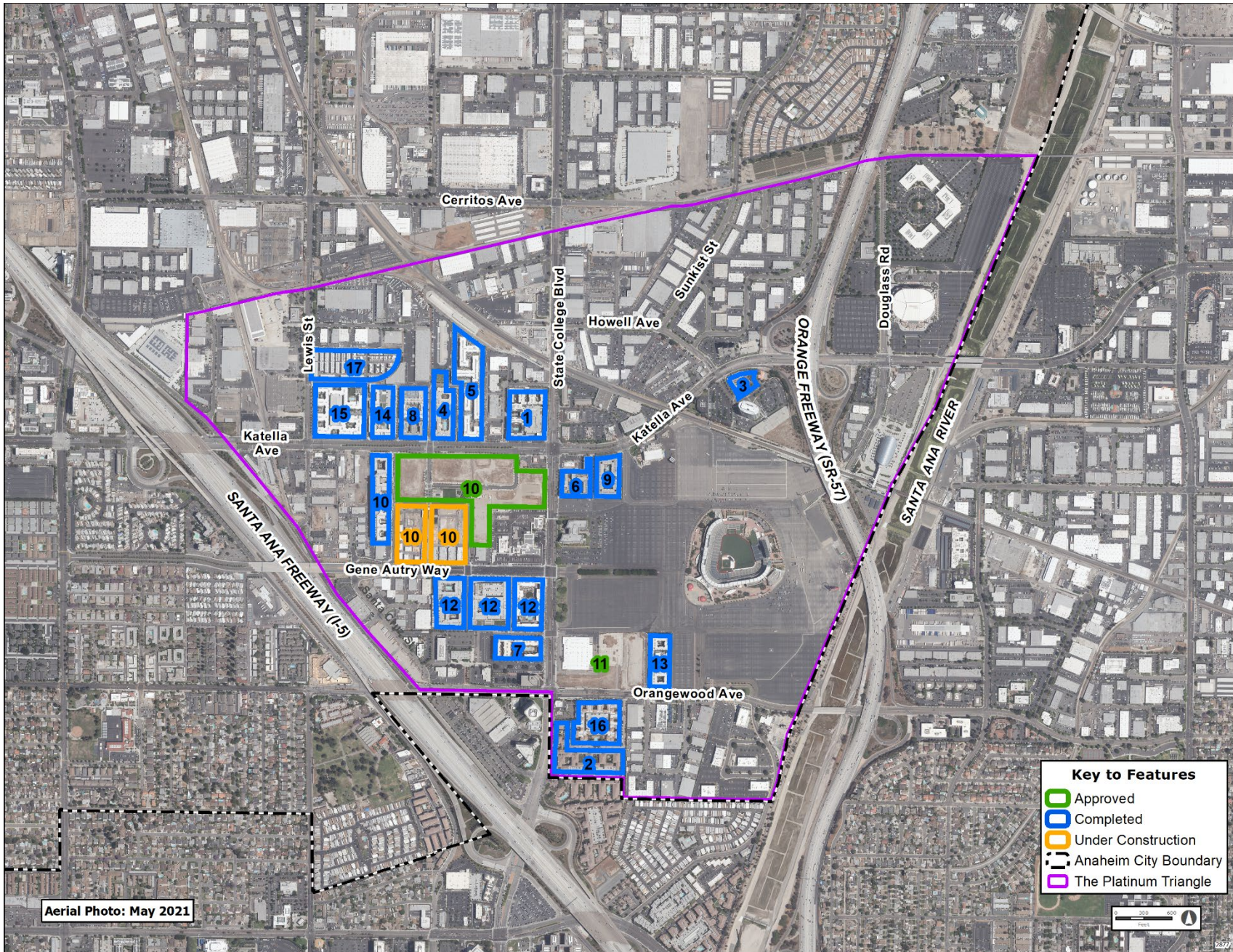


Platinum Triangle: Development Status

1/26/2022



Platinum Triangle: Development Status
1/26/2022

Project	Approved (not under construction)			Under Construction			Completed		
	Dwelling Units	Commercial Square Feet	Office Square Feet	Dwelling Units	Commercial Square Feet	Office Square Feet	Dwelling Units	Commercial Square Feet	Office Square Feet
Total	6,295	1,800,000	2,700,000	108	0	0	5,834	53,969	0
1. Stadium Lofts							390	10,659	
2. Gateway Apartment Homes							352		
3. Shops at Stadium Towers								15,605	
4. Park Viridian							320		
5. Jefferson Platinum Triangle I & II							400		
6. 1818 Platinum Triangle							265		
7. Anavia							250		
8. Anaheim Apartment Communities							336	1,298	
9. Avalon Anaheim Stadium							251	11,807	
10. A-Town Metro	1,120	50,000		108			518		
11. LT Platinum Center									
12. Jefferson Stadium Park							1,079	14,600	
13. The George							340		
14. Parallel (formerly Platinum Vista)							386		
15. Chapman Grand (formerly Katella Grand)							399		
16. Gateway Apartment Homes Phase II							395		
17. Trumark Homes							153		
18. Stadium District Sub-Area A Project	5,175	1,750,000	2,700,000						

**Platinum Triangle: Development Status
1/26/2022**

Status of Active Development Agreements					
Map No.	DAG Case No.	Project/Developer	Adoption Date & Ordinance No.	Expires	Comments
10	2005-00008C	A-Town Metro Lennar	10/20/15 6345	10/20/20 w/three optional 5-yr. extensions to 10/20/35	In 2005, City Council adopted Ordinance No. 6005 approving 2,681 residential units and 150,000 square feet of commercial uses. In 2015, City Council adopted Ordinance No. 6345, which reduced the total number of units from 2,681 units to 1,400 – 1,746 units and reduced the commercial development from 150,000 square feet to 38,000 – 50,000 square feet. The first 518 units are complete.
11	2006-00002	LTG Platinum Center LTG Platinum LLC	10/25/16 6387	10/25/21	This development agreement has expired.
12	2006-00004	Jefferson Stadium Park	6/21/16 6373	6/21/21 w/three optional 5-yr. extensions to 6/21/36	In 2016, City Council approved an application to construct a mixed-use development with 1,079 dwelling units and 14,600 square feet of commercial development. All construction is complete with 1,079 dwelling units and 14,600 square feet of commercial space.

**Platinum Triangle: Development Status
1/26/2022**

Status of Active Development Agreements					
Map No.	DAG Case No.	Project/Developer	Adoption Date & Ordinance No.	Expires	Comments
17	2016-00004	Trumark Homes	2/28/17 6398	2/28/2022	In February 2017, City Council approved an application to construct 153 single-family attached residential units. All construction is complete with 153 dwelling units.
18	2020-00002	SRB Management, LLC	10/6/20 6497	10/6/75 w/ automatic extension under certain circumstances	In October 2020, City Council approved an application for a mixed-use development with 5,175 dwelling units, 1.75 million sq. ft. of commercial space, and 2.7 sq. ft. of office spaces.

**Platinum Triangle: Development Status
1/26/2022**

Platinum Triangle Mixed Use (PTMU) Overlay Zone: Implementation Status			
	Dwelling Units	Commercial Square Feet	Office Square Feet
Development Permitted	17,501	4,782,243	13,490,233
Existing ¹	0	669,902	1,945,412
Approved (not under construction)	6,295	1,800,000	2,700,000
Under Construction ²	108	0	0
Completed	5,834	53,969	0
Remaining Development Intensity	5,264	2,258,372	8,844,821

¹Constructed prior to PTMU Overlay Zone Adoption (8/17/2004) and still existing as of 10/21/14.