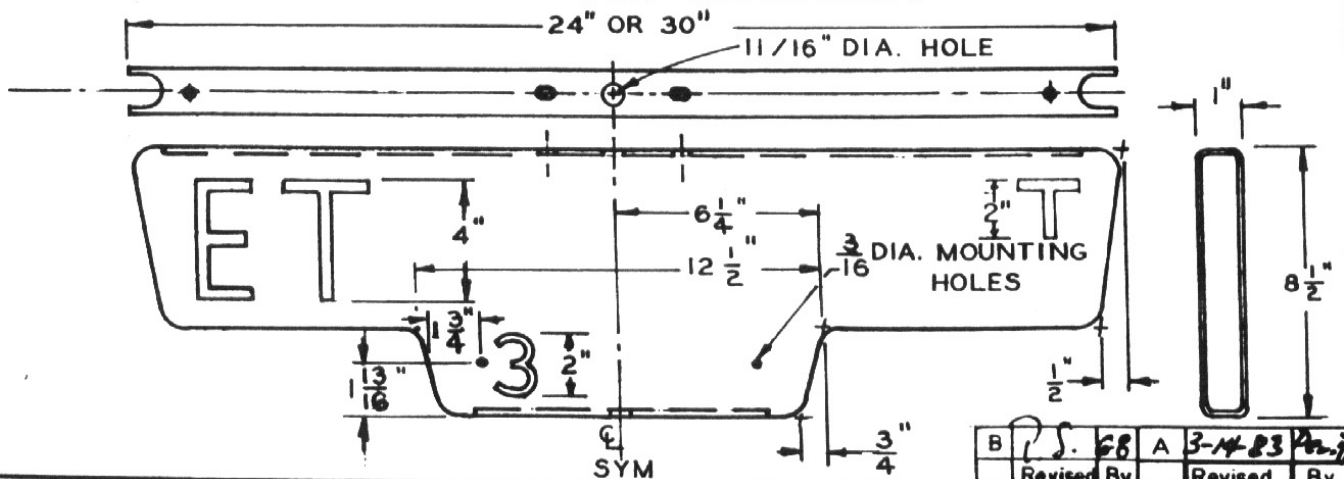


- A. 5/8" x 20-1/2" CARRIAGE BOLT GALVANIZED.
- B. TOP AND CROSS SADDLE, GALVANIZED. CAST IRON, CAST ALUMINUM, OR 14 GAUGE STAINLESS STEEL.
- C. WEATHERPROOF COMPOSITION, OR POLYETHYLENE GASKET.
- D. CAST IRON GALVANIZED OR CAST ALUMINUM POST CAP WITH 3-3/8" ALLEN HEAD SET SCREWS TO FIT STANDARD WT. 2-1/2" PIPE.
- E. SIGN COLOR - PUBLIC-WHITE LETTERING ON BLUE BACKGROUND; PVT.-BLUE LETTERING ON WHITE BACKGROUND.
- F. SIGN MATERIAL - SHALL BE REFLECTORIZED WITH MINIMUM ENGINEERING GRADE BLUE-2275 SCOTCHLITE SILVER-2290 SCOTCHLITE



B	J.S.	68	A	3-14-83	Am. J.
Revised By			Revised		By

<b>CITY OF ANAHEIM</b> DEPARTMENT OF PUBLIC WORKS ENGINEERING DIVISION		<b>STANDARD STREET NAME SIGN</b>	
APP <i>Thornton P. Russell</i> 6/29/65 Director of Public Works Date	APP <i>James P. Maddal</i> 7-12-65 City Engineer Date	STD. PLAN NO. 425-B	