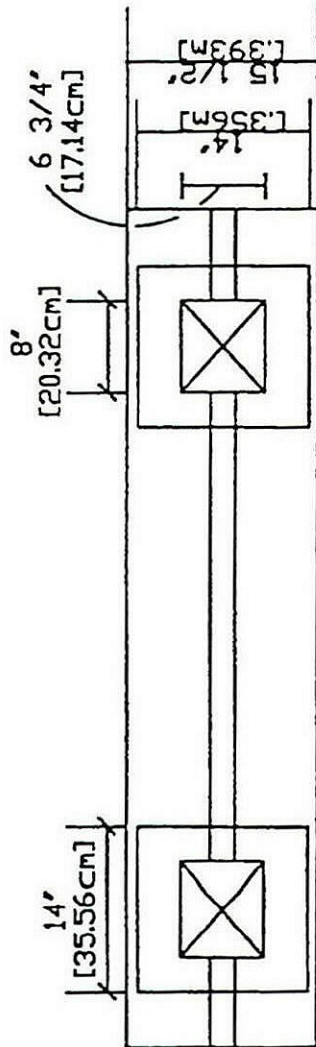


## **APPENDIX D**

### **Standard Detail for Newspaper Racks in the Platinum Triangle**

Top Elevation



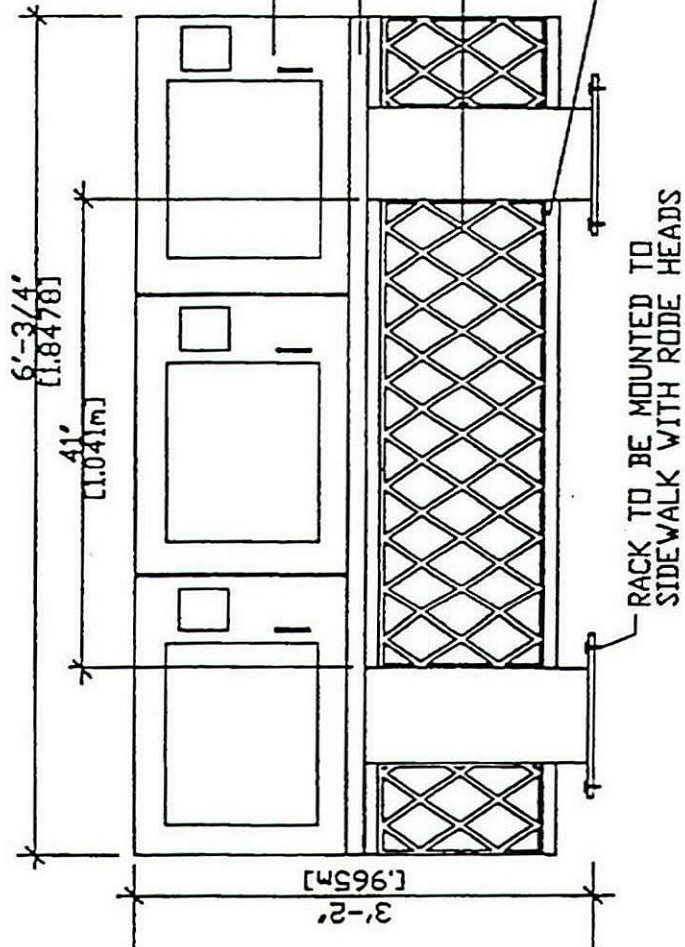
THREE K-49-16, 72-3/4" WIDE (SIDE BY SIDE) MODULAR UNITS, WITH A TRIPLE WIDE TRAY (MB#3) AND TWO 23" HIGH PEDESTALS (MP#3) BY SHD-RACK OR EQUIVALENT WITH ANCHOR BOLT MOUNTING (BY OTHERS).

REFINISH ALL EXPOSED AREAS OF THE STANDARD RACK TO MATCH P7 (BY OTHERS).

REFINISH ALL EXPOSED AREAS OF THE TRAY TO MATCH P5

OPEN TRELLIS TO CONFORM TO ARDIS IN SIZE AND APPEARANCE FINISHED TO MATCH P7. BACKED BY SOLID SURFACE TO MATCH P7

2"X2" ALUMINUM TUBE PAINTED TO MATCH P5

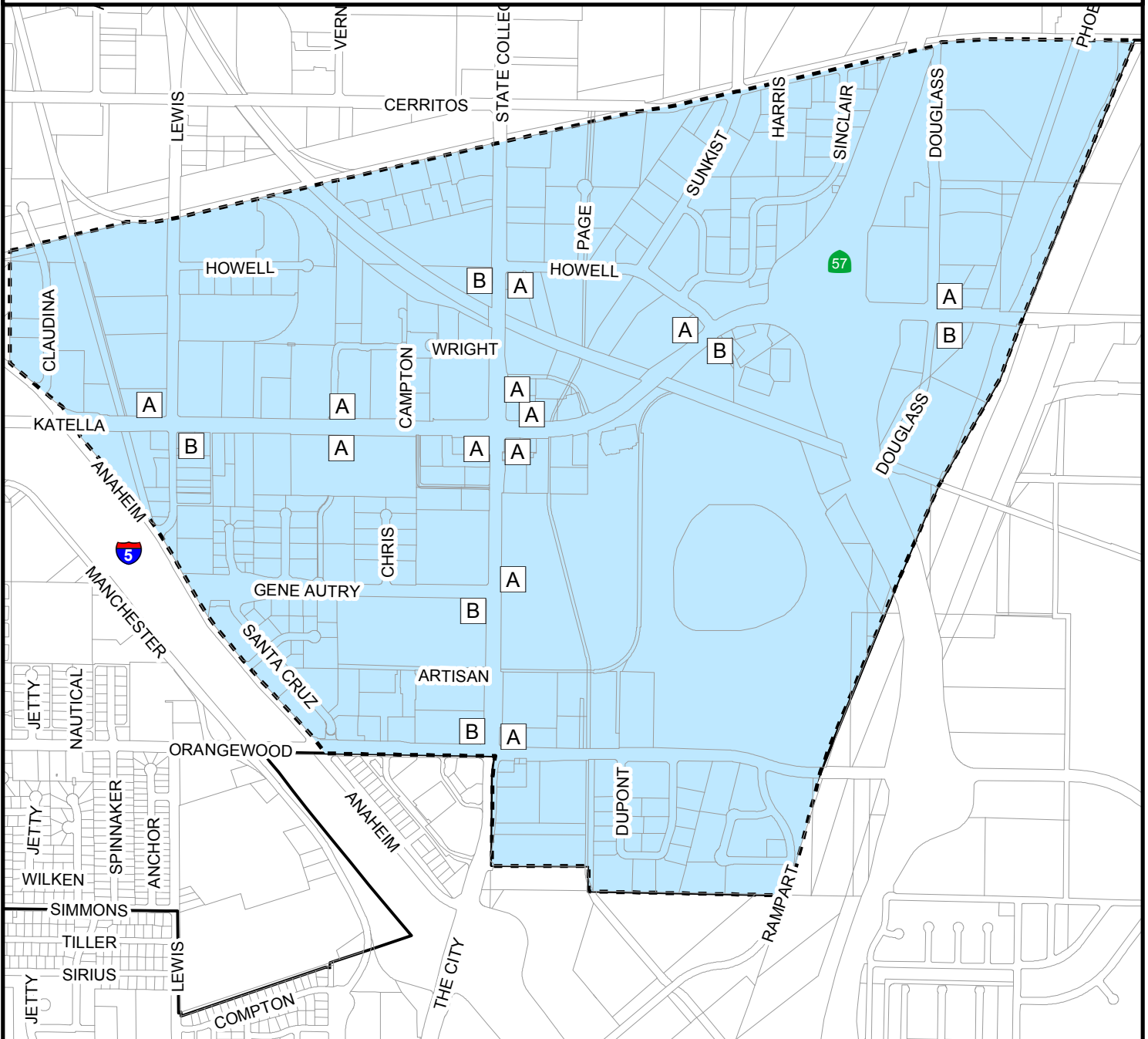


RACK TO BE MOUNTED TO SIDEWALK WITH RODE HEADS

Front Elevation

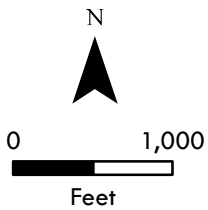


# Platinum Triangle Newspaper Rack Locations



## Newspaper Rack Permitted Locations:

Newspaper racks in The Platinum Triangle shall be installed in the public right-of-way only adjacent to bus stops with shelters in accordance with Engineering Standards on file in the Public Works Department.



## Bus Stops

- A Bus Stop with Shelter
- B Bus Stop

- Platinum Triangle
- City Limits



City of Anaheim  
 Planning GIS  
 October 18<sup>th</sup>, 2006

The location and type of bus stop may be modified subject to the approval of the City Engineer.