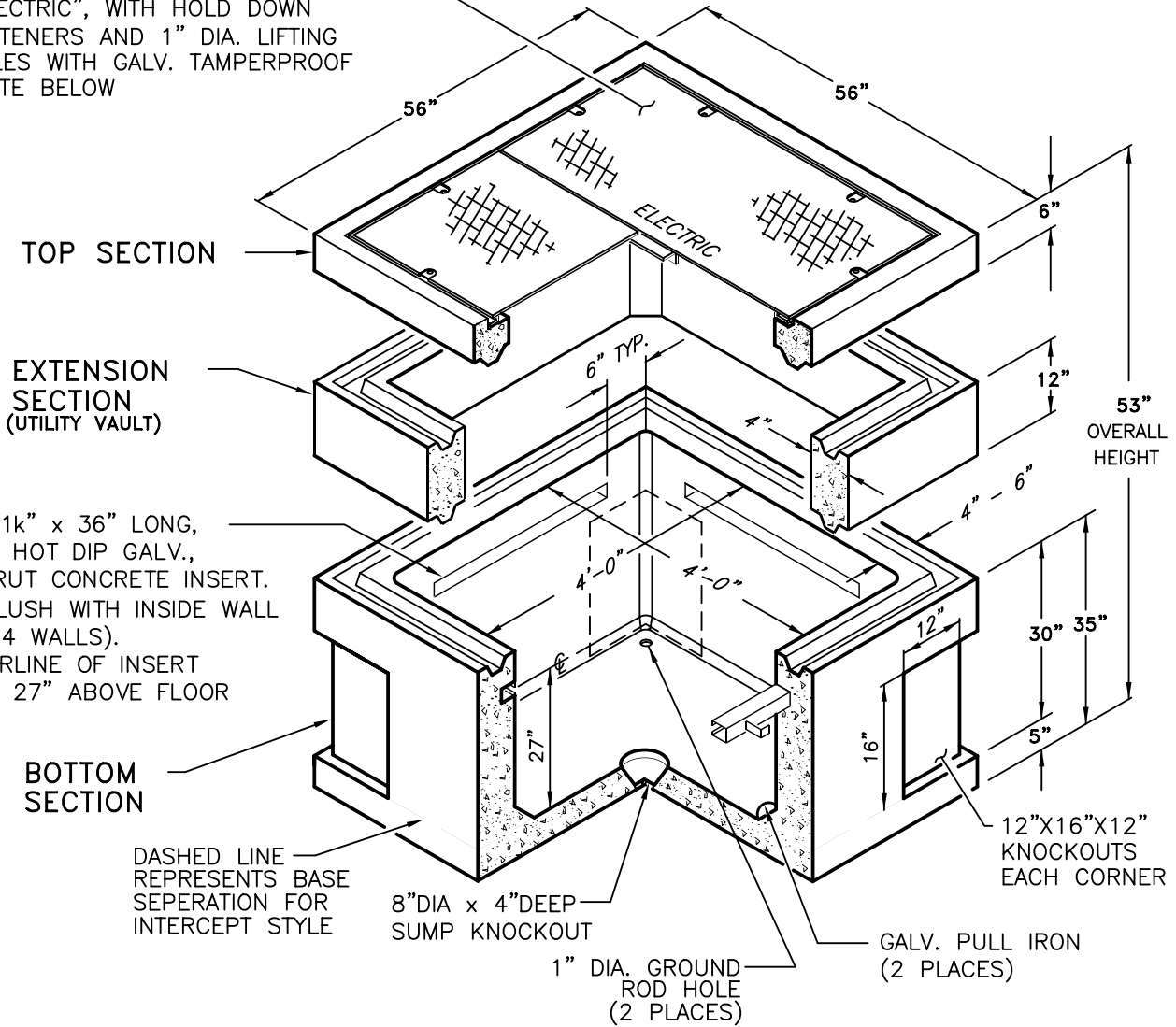


SCOPE: THIS STANDARD SHOWS REQUIREMENT FOR EASEMENT AND INSTALLATION FOR A 4' x 4' VAULT WITH COVER FOR 12KV JUNCTIONS.

RPM PARKWAY OR GALVANIZED TRAFFIC COVER MARKED "ELECTRIC", WITH HOLD DOWN FASTENERS AND 1" DIA. LIFTING HOLES WITH GALV. TAMPERPROOF PLATE BELOW



1k" x 1k" x 36" LONG, 12GA., HOT DIP GALV., UNISTRUT CONCRETE INSERT. SET FLUSH WITH INSIDE WALL (TYP. 4 WALLS). CENTERLINE OF INSERT TO BE 27" ABOVE FLOOR

DASHED LINE REPRESENTS BASE SEPERATION FOR INTERCEPT STYLE

8"DIA x 4"DEEP SUMP KNOCKOUT

1" DIA. GROUND ROD HOLE (2 PLACES)

12"x16"x12" KNOCKOUTS EACH CORNER

GALV. PULL IRON (2 PLACES)

STYLE	USE	UTILITY VAULT*	JENSEN
STANDARD	PKWY	4448HL	K44-FP48-16P
	TRFC	4448HL	K44-FP48-16T
INTERCEPT	PKWY	4448IHL	K44-FI48-16P
	TRFC	4448IHL	K44-FI48-16T

MAINTENANCE ONLY

* UTILITY VAULT DESIGN HAS A SEPARATE EXTENSION SECTION, THE OUTSIDE DIMENSION IS 58 INCHES AND THE USAGE SHALL BE IDENTIFIED AT THE TIME OF ORDER.

FILENAME: CU1600-14A REV5

CITY OF ANAHEIM
PUBLIC UTILITIES DEPARTMENT
ELECTRICAL DIVISION
T&D CONSTRUCTION STANDARDS

APPROVALS

T&D MGR	FIELD MGR	OPER. MGR
<i>[Signature]</i>	<i>[Signature]</i>	<i>[Signature]</i>

REVISION KEYS: ADDED / REVISED TEXT ADDED / REVISED MATERIAL

4' x 4' VAULT WITH COVER FOR 12KV JUNCTIONS

NEW SHEET

REVISION NO. **5**

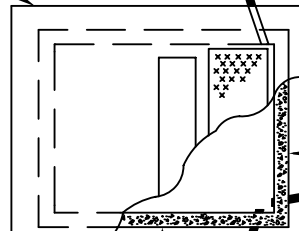
ISSUE DATE: **01-11**

SHEET **1** OF **2**

CONSTRUCTION STANDARD:
CU 1600-14A

PADMOUNT TRANSFORMER
PAD AND VAULT PER
CU 1600-20 AND SIZED
PER WORK ORDER DRAWINGS
(SEE NOTE E & F)

4' X 4' VAULT WITH COVER,
ALTERNATE LOCATION
(SEE NOTE E)



4' X 4' VAULT
WITH COVER,
PREFERRED LOCATION

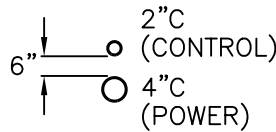
PRIMARY CONDUIT RUNS
AS SPECIFIED IN WORK
ORDER DRAWINGS

12"
MIN.

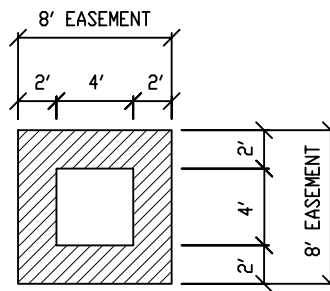
SEE NOTE F

1-2" & 1-4" PVC CONDUIT
SCHED. 40 MIN.
SEE CU 1600-4A
INSTALL VERTICAL WITH
6" SPACING

4' X 4' VAULT WITH
COVER, ALTERNATE LOCATION
(SEE NOTE E)



LOCATION DETAIL WITH PADMOUNT TRANSFORMER



4'x4' EASEMENT CLEARANCE REQUIREMENT

NOTES:

- A. VAULT CONSTRUCTION SHALL MEET APPLICABLE REQUIREMENTS OF THE LATEST REVISED EDITION OF THE FOLLOWING STANDARDS: AC 1318, ASTM C-857 & AASHTO (WHICH INCLUDES AASHTO H-20 TRAFFIC WHEEL LOADING).
- B. EXCAVATION PER CU 1600-4B, MINIMUM SIZE: 72" X 72" X DEPTH REQUIRED.
- C. ALL JOINTS SHALL BE GASKETED AND WATERTIGHT.
- D. ONLY TONGUE AND GROVE GRADE RINGS SHALL BE ADDED FOR GREATER DEPTHS.
- E. WHEN INSTALLED IN CONJUNCTION WITH PADMOUNT TRANSFORMER PAD AND VAULT INSTALLATION, SEE LOCATION DETAIL ABOVE OR AS SPECIFIED ON WORK ORDER DRAWINGS.
- F. FOR ALTERNATE LOCATIONS SHOWN ABOVE, THIS DIMENSION SHALL BE:

18" MIN. WITH 6' X 8' TRANSFORMER PAD	MAINTENANCE ONLY
30" MIN. WITH 8' X 10' TRANSFORMER PAD	
- G. INSTALL EQUIPMENT PROTECTIVE POSTS PER CU 1600-9 AND AS SHOWN ON WORK ORDER DRAWINGS OR REQUIRED BY UTILITY ELECTRICAL INSPECTOR.

FILENAME: CU1600-14A REV5

CITY OF ANAHEIM PUBLIC UTILITIES DEPARTMENT ELECTRICAL DIVISION T&D CONSTRUCTION STANDARDS	REVISION KEYS: ADDED / REVISED TEXT	 ADDED / REVISED MATERIAL	NEW SHEET									
	<h2 style="margin: 0;">4' x 4' VAULT WITH COVER FOR 12KV JUNCTIONS</h2>			REVISION NO. 5 ISSUE DATE: 01-11 SHEET 2 OF 2 CONSTRUCTION STANDARD: <h3 style="margin: 0;">CU 1600-14A</h3>								
<table border="1" style="width: 100%; border-collapse: collapse;"> <tr> <th colspan="3" style="text-align: left;">APPROVALS</th> </tr> <tr> <td style="width: 33%;">T&D MGR</td> <td style="width: 33%;">FIELD MGR</td> <td style="width: 33%;">OPER. MGR</td> </tr> <tr> <td style="text-align: center;"></td> <td style="text-align: center;"></td> <td style="text-align: center;"></td> </tr> </table>				APPROVALS			T&D MGR	FIELD MGR	OPER. MGR			
APPROVALS												
T&D MGR	FIELD MGR	OPER. MGR										