

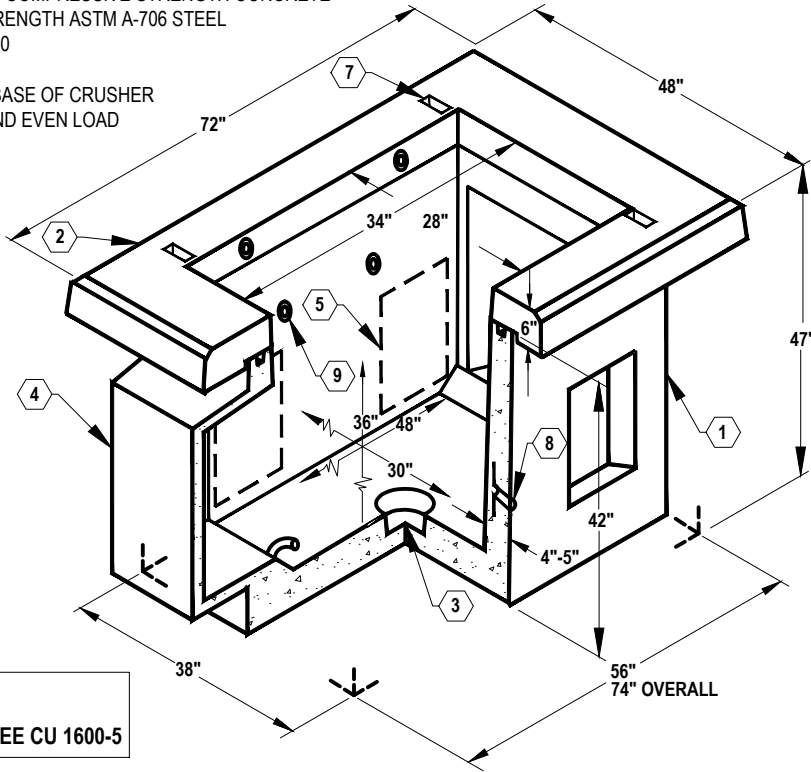
SCOPE: THIS STANDARD SHOWS SLAB TOP AND CABLE BOX FOR INSTALLING PMC-3 OR PMC-4 SWITCH CABINET.

MATERIAL LIST - K3048-PUV36-11

ITEM	PART NO.	DESCRIPTION	REBAR NO./LOCATE	MOUNT/ WEIGHT
1	PB3048D-B36-05	36" BOTTOM SECTION	CG-LOOP3-3048(471) CG-MAT-3048D(155)	2,936 LBS.
2	PD3048-P-11-S3	48"X 72"X6" PMH PAD-SPECIAL	CG-PD3048-P-11(22)	1,050 LBS.
3	KNOCK OUT	6" X 7" DIAMETER SUMP X 2" DEEP	BOTTOM SECTION	(1) CORE
4	KNOCK OUT	24" X 26" DUCTED K.O. X 12" DEEP DRAFT: T=S1=S2=2", B=0"	BOTTOM SECTION	(2) CORE
5	KNOCK OUT	8" X 16" K.O. X 3" DEEP	BOTTOM SECTION	(4) SHELL
6	KNOCK OUT	1" DIA BLIND GROUND ROD HOLE	BOTTOM SECTION	(2) CORE
7	55-21-004	CLEAN OUT HOLE	TRANS PAD	(2)TABLE
8	55-10-830	1/2" SS LOOP INSERT	BOTTOM SECTION	(2) CORE
9	50-20-203	2 TON X 3-3/8" GALVANIZED RISS HANDLING	TRANS PAD & BTM SECTION	(4) CORE
10	55-35-06	7/8" DIA X 6" GALV. PULL IRON	BOTTOM SECTION	(2) -----

NOTES:

- VAULT DESIGNED IN ACCORDANCE WITH AASHTO H-20-44 TRAFFIC BRIDGE LOADING USING 5,500 PSI [37.92MPa] COMPRESSIVE STRENGTH CONCRETE AND 60,000 PSI [413.2MPa] YIELD STRENGTH ASTM A-706 STEEL REINFORCEMENT PER CALCS. #30750
- VAULT TO BE PLACED ON A MIN. 6" BASE OF CRUSHER RUN FOR EASE OF INSTALLATION AND EVEN LOAD DISTRIBUTION.
- CONCRETE MIX USED IN POURING THIS PRODUCT SHALL USE FLY ASH AS AN(ADD) MIXTURE.
- TOTAL WEIGHT OF ASSEMBLY AS SHOWN MIS 3,986 LBS.



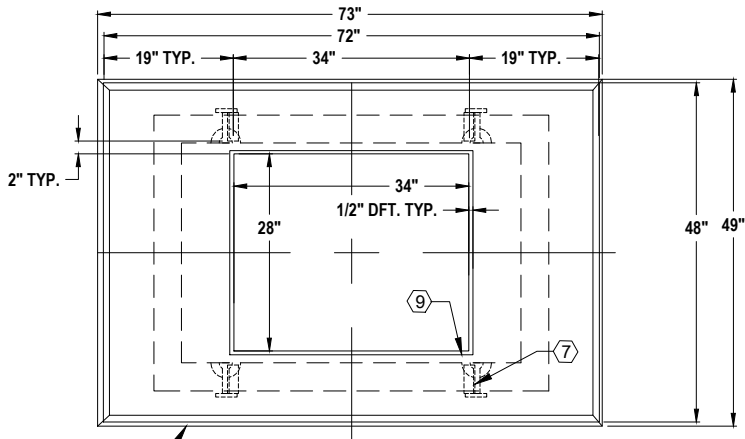
INSTALLATION NOTES:
1. FOR WORKING CLEARANCE SEE CU 1600-5

OPTION 1

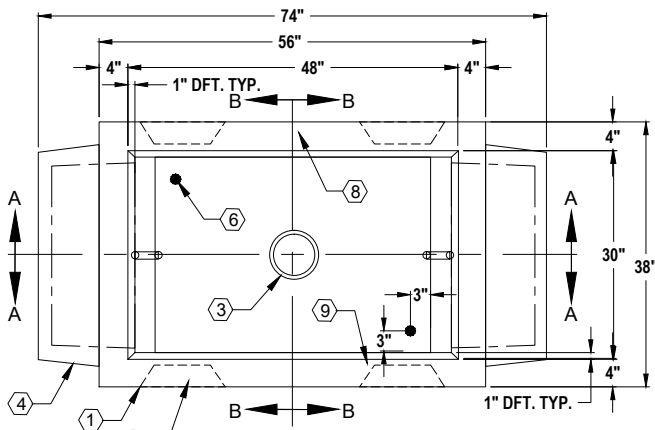
STYLE	JENSEN CAT. NO.	UTILITY VAULT CAT. NO.	ANAHEIM PART. NO.
STANDARD	K3048-PUV36-11	-	-
INTERCEPT	-	-	-

FILENAME: CU1600-1D REV4

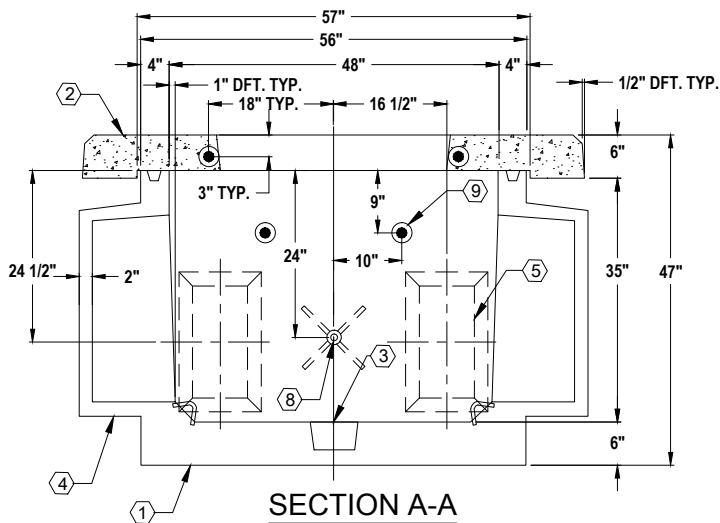
CITY OF ANAHEIM PUBLIC UTILITIES DEPARTMENT ELECTRICAL DIVISION T&D CONSTRUCTION STANDARDS	REVISION KEYS: ADDED / REVISED TEXT ADDED / REVISED MATERIAL	NEW SHEET	NEW SHEET
	PMC-3 OR PMC-4 PAD AND CABLEBOX		
	REVISION NO. 4		
	ISSUE DATE: 01-16		
APPROVALS PREP BY: <i>MH</i> T&D MGR: <i>EB</i> SYS PLN MGR: <i>---</i> OPS MGR: <i>---</i> SUB MAINT: <i>---</i>		SHEET 1 OF 3	
		CONSTRUCTION STANDARD: CU 1600-1D	



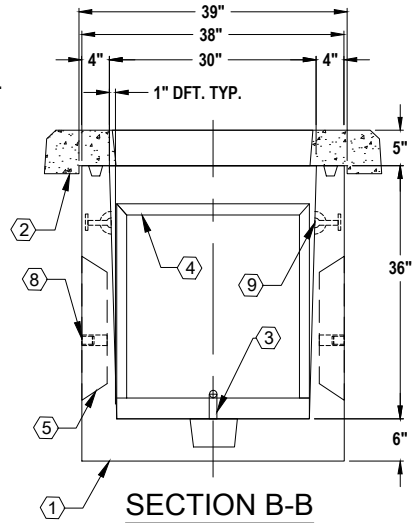
② PLAN VIEW OF PAD



PLAN VIEW



SECTION A-A



SECTION B-B

OPTION 1

FILENAME: CU 1600-1D REV4

CITY OF ANAHEIM
PUBLIC UTILITIES DEPARTMENT
ELECTRICAL DIVISION
T&D CONSTRUCTION STANDARDS

APPROVALS			
PREP BY	T&D MGR	SYS PLN MGR	SUB MAINT
MH	EB	--	DA

REVISION KEYS:



ADDED / REVISED TEXT



ADDED / REVISED MATERIAL

NEW SHEET

NEW SHEET

**PMC-3 OR PMC-4 PAD
AND CABLEBOX**

REVISION NO. **4**

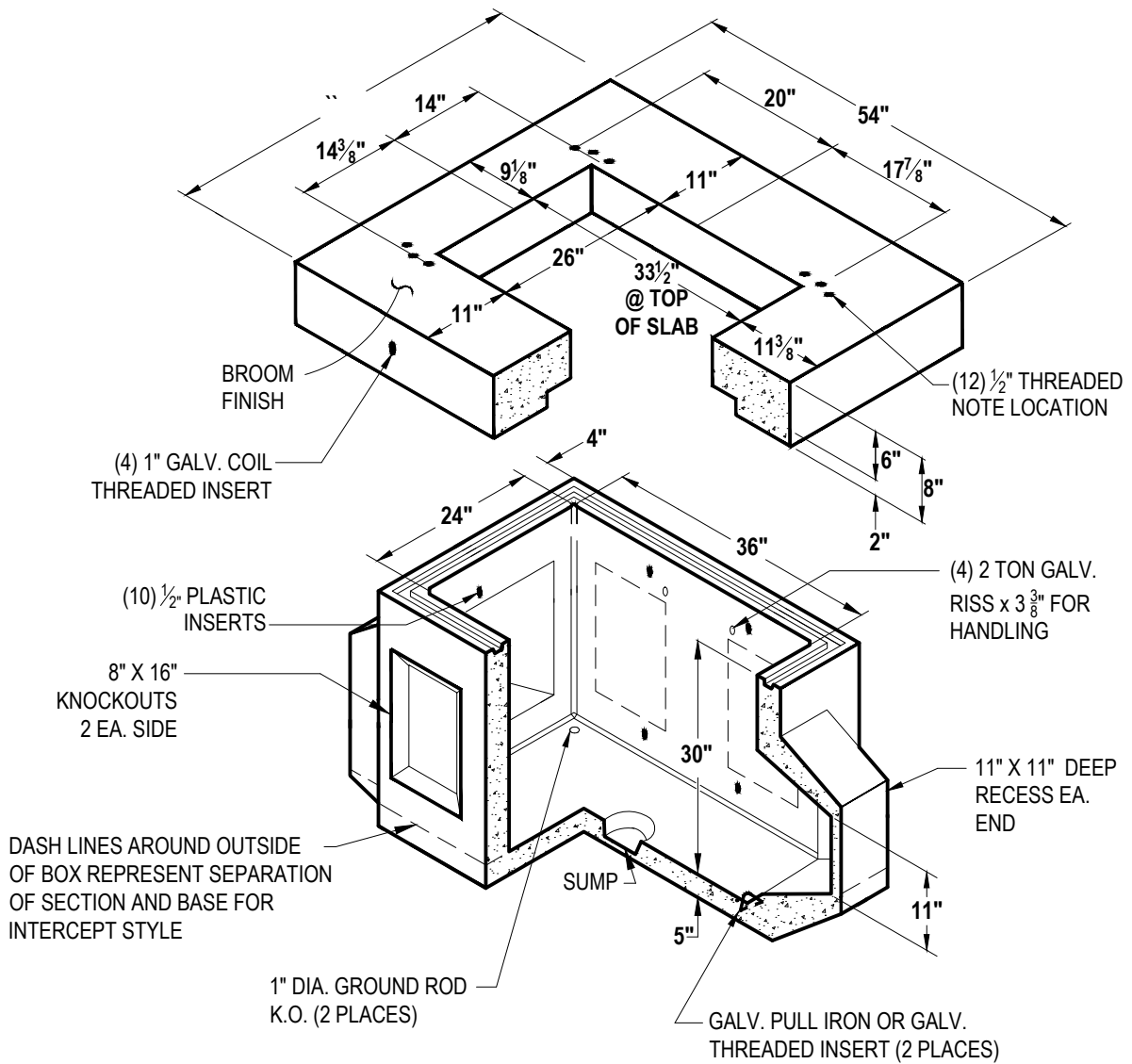
ISSUE DATE: **01-16**

SHEET **2** OF **3**

CONSTRUCTION STANDARD:

CU 1600-1D

FILENAME: CU 1600-1D REV4



STYLE	JENSEN CAT. NO.	UTILITY VAULT CAT. NO.	ANAHEIM PART. NO.
STANDARD	K2436PUV36-16	ANA2336RPB	-
INTERCEPT	K236-PMH361-16	ANA2336IPB	-

OPTION 2

CITY OF ANAHEIM PUBLIC UTILITIES DEPARTMENT ELECTRICAL DIVISION T&D CONSTRUCTION STANDARDS	REVISION KEYS:	ADDED / REVISED TEXT	ADDED / REVISED MATERIAL	NEW SHEET	NEW SHEET	
	PMC-3 OR PMC-4 PAD AND CABLEBOX				REVISION NO. 4	
					ISSUE DATE: 01-16	
	APPROVALS PREP BY T&D MGR SYS PLN MGR OPS MGR SUB MAINT				SHEET 3 OF 3	
				CONSTRUCTION STANDARD: CU 1600-1D		