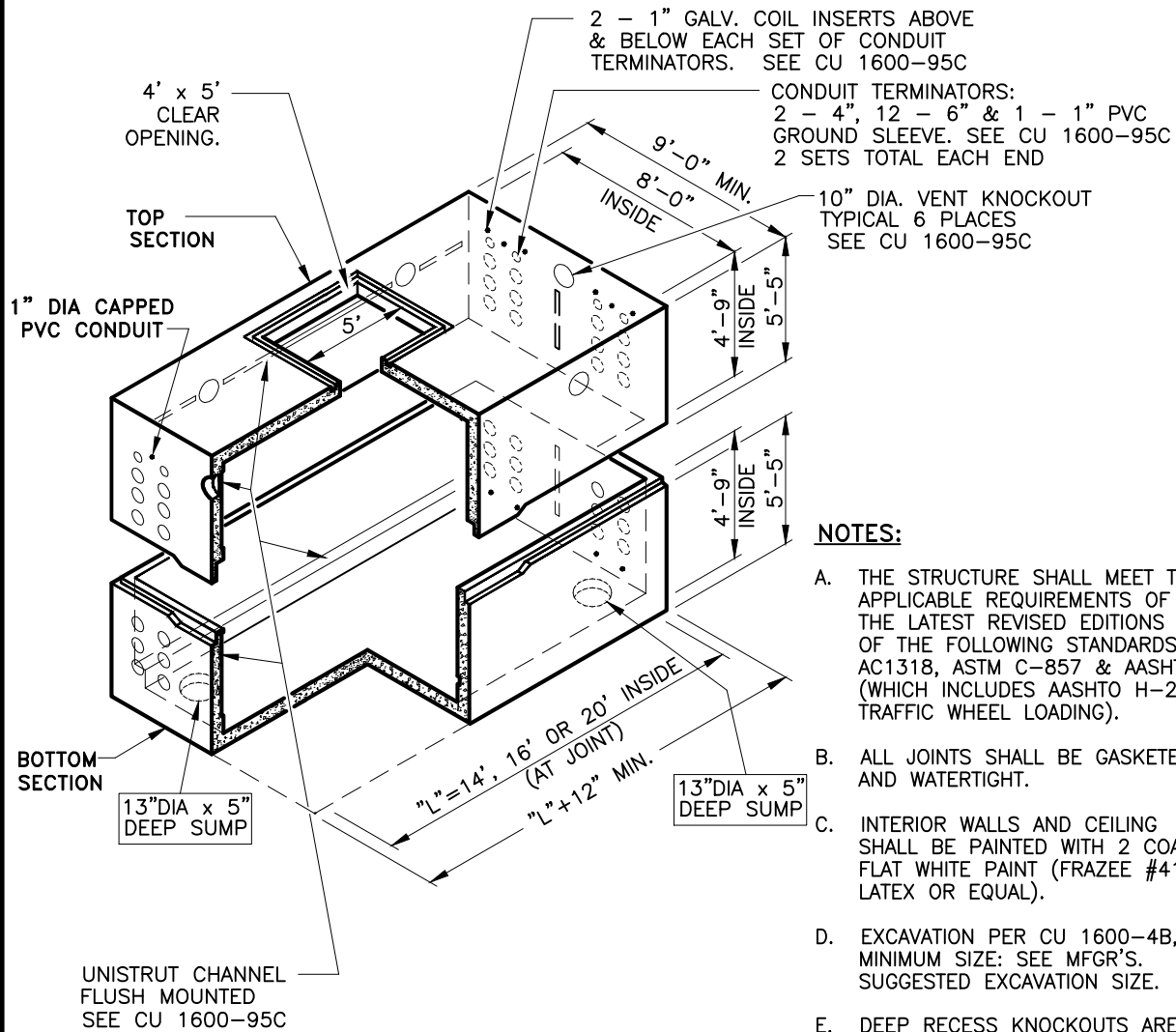


SCOPE: THIS STANDARD SHOWS 8' WIDE x 14', 16' OR 20' LONG x 9'-4" DEEP TRANSMISSION TUB VAULT.



NOTES:

- A. THE STRUCTURE SHALL MEET THE APPLICABLE REQUIREMENTS OF THE LATEST REVISED EDITIONS OF THE FOLLOWING STANDARDS: AC1318, ASTM C-857 & AASHTO (WHICH INCLUDES AASHTO H-20 TRAFFIC WHEEL LOADING).
- B. ALL JOINTS SHALL BE GASKETED AND WATERTIGHT.
- C. INTERIOR WALLS AND CEILING SHALL BE PAINTED WITH 2 COATS FLAT WHITE PAINT (FRAZEE #410 LATEX OR EQUAL).
- D. EXCAVATION PER CU 1600-4B, MINIMUM SIZE: SEE MFR'S. SUGGESTED EXCAVATION SIZE.
- E. DEEP RECESS KNOCKOUTS ARE ACCEPTABLE.
- F. DEPTH OF COVER OVER TOP SECTION LIMIT TO 1'-0" MIN. TO 5'-0" MAX.

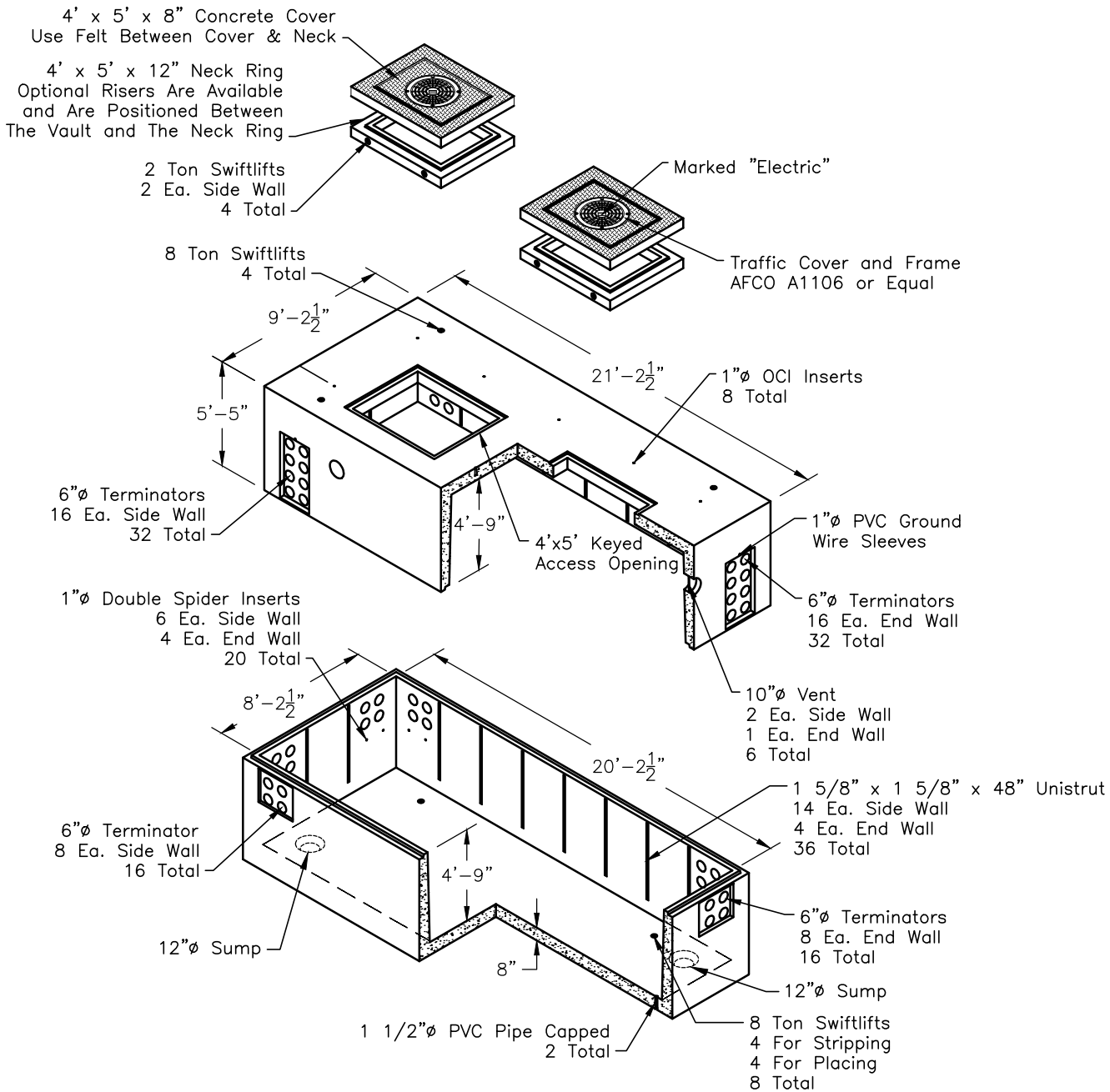
SIZE	JENSEN CAT. NO.	UTILITY VAULT CO. CAT. NO.	COMPATIBLE UNIT
8' x 14'	K814-FV112-16	ANA814114TV	
8' x 16'	K816-FV114-16	ANA816114TV	V8x16x9.5 CONT
8' x 20'	K820-FV112-16	ANA820114DV	

MOVED THE SUMP TO ONE CORNER & ADDED ANOTHER IN THE OPPOSITE CORNER.

FILENAME: CU1600-95B REV5

CITY OF ANAHEIM PUBLIC UTILITIES DEPARTMENT ELECTRICAL DIVISION T&D CONSTRUCTION STANDARDS	REVISION KEYS: ADDED / REVISED TEXT ADDED / REVISED MATERIAL	NEW SHEET	NEW SHEET										
	8' WIDE x 14', 16' OR 20' LONG x 9'-6" DEEP TRANSMISSION TUB VAULT		REVISION NO. 5 ISSUE DATE: 01-15 SHEET 1 OF 2 CONSTRUCTION STANDARD: CU 1600-95B										
APPROVALS <table border="1"> <tr> <td>PREP BY</td> <td>T&D MGR</td> <td>SYS PLN MGR</td> <td>OPS MGR</td> <td>SUB MAINT</td> </tr> <tr> <td>MH</td> <td>EB</td> <td>-</td> <td>CMK</td> <td>-</td> </tr> </table>				PREP BY	T&D MGR	SYS PLN MGR	OPS MGR	SUB MAINT	MH	EB	-	CMK	-
PREP BY	T&D MGR	SYS PLN MGR	OPS MGR	SUB MAINT									
MH	EB	-	CMK	-									

FILENAME: CU1600-95B REV5



Approximate Weights
Top - 38700 Lbs
Base - 43900 Lbs

(UTILITY VAULT ONLY)

Overall Outside Dimensions
9'-2 1/2"W x 21'-2 1/2"L x 10'-10"H
Overall Inside Dimensions
8'-0"W x 20'-0"L x 9'-6"H

MOVED THE SUMP TO ONE CORNER & ADDED ANOTHER IN THE OPPOSITE CORNER.

CITY OF ANAHEIM PUBLIC UTILITIES DEPARTMENT ELECTRICAL DIVISION T&D CONSTRUCTION STANDARDS		REVISION KEYS:		ADDED / REVISED TEXT		ADDED / REVISED MATERIAL	NEW SHEET	NEW SHEET	
		8' WIDE x 14', 16' OR 20' LONG x 9'-6" DEEP TRANSMISSION TUB VAULT						REVISION NO. 5	NEW SHEET
APPROVALS PREP BY: MH T&D MGR: EB SYS PLN MGR: - OPS MGR: CMR SUB MAINT: -								ISSUE DATE: 01-15	NEW SHEET
								SHEET 2 OF 2	NEW SHEET
								CONSTRUCTION STANDARD:	NEW SHEET
								CU 1600-95B	NEW SHEET