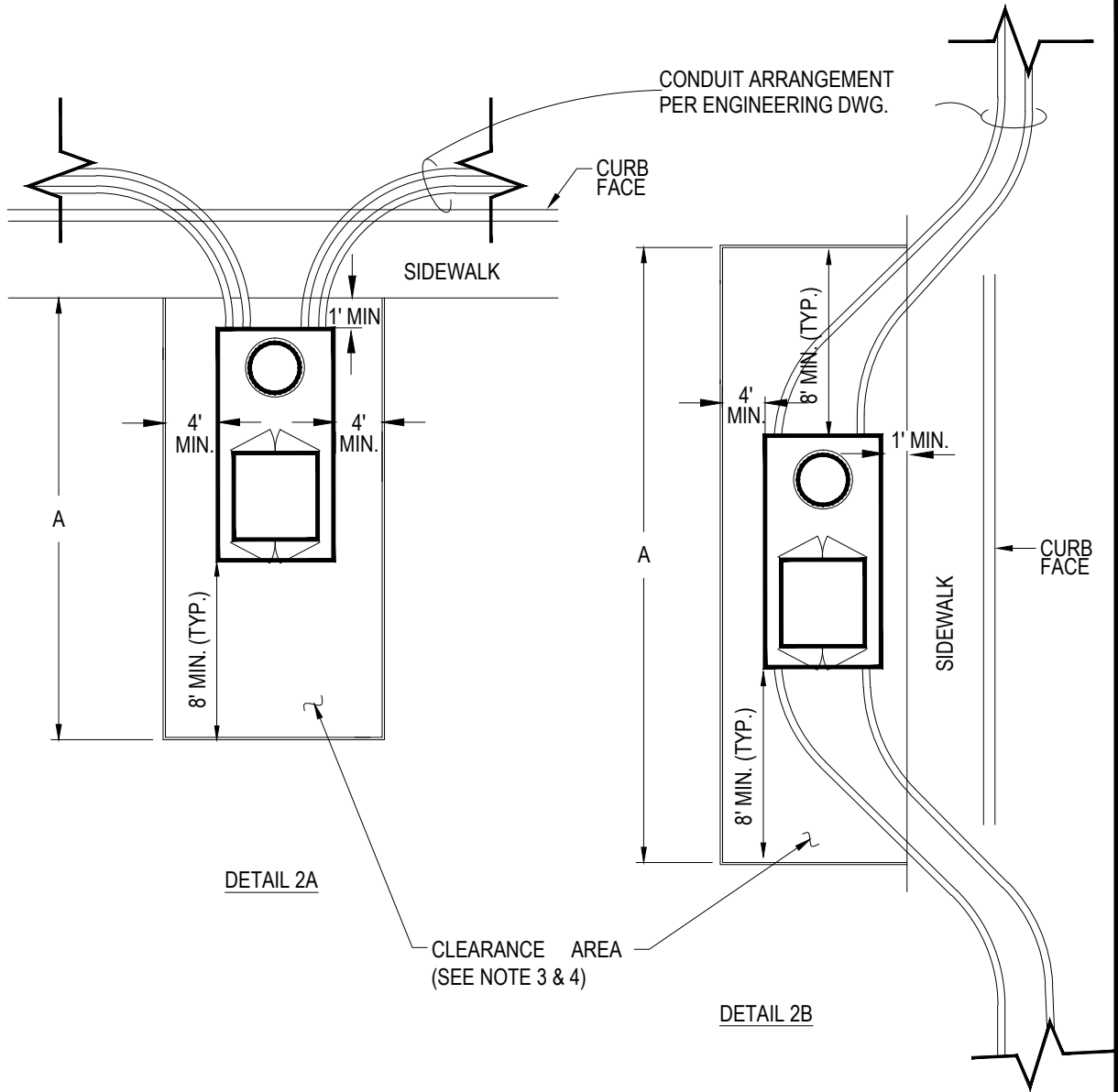


SCOPE: THIS STANDARD SHOWS INSTALLATION AND CONDUIT ARRANGEMENT FOR 12KV PADMOUNT PMC & PME SWITCHES.



DETAIL 2A

DETAIL 2B

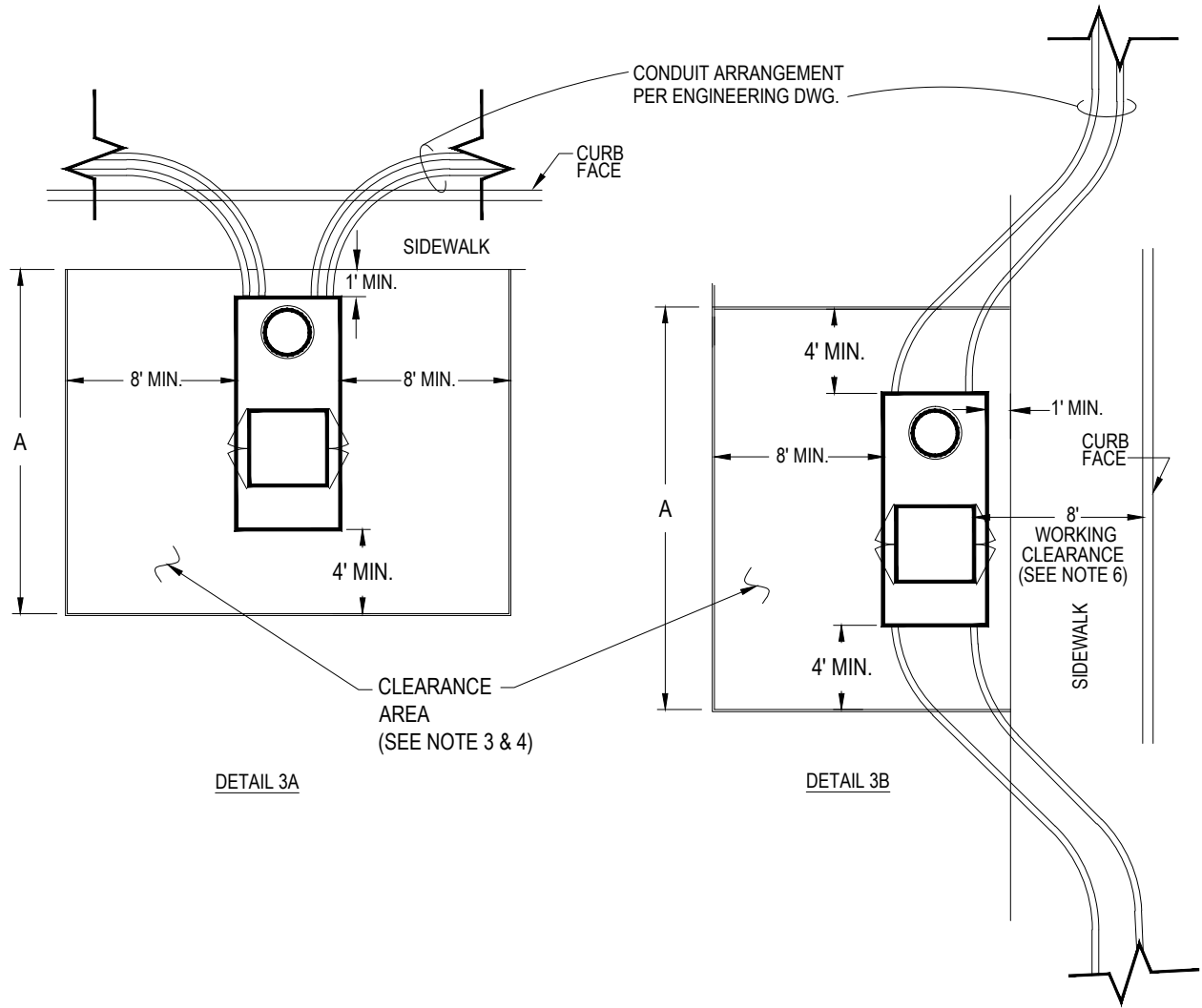
OPTION 1

UPDATED TO MOVE OPTION 1 TO MAINTENANCE

FILENAME: CU1600-5 REV10

CITY OF ANAHEIM PUBLIC UTILITIES DEPARTMENT ELECTRICAL DIVISION T&D CONSTRUCTION STANDARDS		REVISION KEYS:	ADDED / REVISED TEXT	ADDED / REVISED MATERIAL	NEW SHEET	NEW SHEET
		12KV PADMOUNT SWITCH VAULT INSTALLATION AND CONDUIT ARRANGEMENT				REVISION NO. 10
SHEET 1 OF 3	CONSTRUCTION STANDARD:					
CU 1600-5						
APPROVALS PREP BY T&D MGR SYS PLN MGR OPS MGR SUB MAINT <i>MH</i> <i>EB</i> --- <i>[Signature]</i> ---						

FILENAME: CU1600-5 REV10



OPTION 2

UPDATED TO MOVE OPTION 1 TO MAINTENANCE

CITY OF ANAHEIM PUBLIC UTILITIES DEPARTMENT ELECTRICAL DIVISION T&D CONSTRUCTION STANDARDS				
APPROVALS PREP BY T&D MGR SYS PLN MGR OPS MGR SUB MAINT				
MH	EB	--	DA	--

REVISION KEYS:	ADDED / REVISED TEXT	ADDED / REVISED MATERIAL
----------------	----------------------	--------------------------

**12KV PADMOUNT SWITCH
 VAULT INSTALLATION
 AND CONDUIT ARRANGEMENT**

NEW SHEET	NEW SHEET
REVISION NO.	10
ISSUE DATE :	01-16
SHEET	2 OF 3
CONSTRUCTION STANDARD:	
CU 1600-5	

NOTES:

1. ALL CONDUIT BENDS TO BE LESS THAN 22.5°.
2. FOR ACTUAL INSTALLATIONS AND CONDUIT SIZES, REFER TO WORKING DRAWINGS.
3. PUBLIC UTILITY EASEMENT (P.U.E.) IS REQUIRED FOR INSTALLATION OF EQUIPMENT OR FACILITIES OUTSIDE THE PUBLIC RIGHT-OF-WAY. NO OTHER UTILITY OR PRIVATE EQUIPMENT PULL BOXES, ABOVE GROUND PEDESTALS, OBSTRUCTION OF ANY KIND SHALL BE INSTALLED WITHIN THE CLEARANCE/PUE AREA OR SIDEWALK FRONTING CLEARANCE AREA.
4. CLEARANCE AREA IS TO BE COVERED WITH 4" SIDEWALK QUALITY CONCRETE.
5. SEE CU 1600-4B FOR EXCAVATION DETAILS. FOR MINIMUM SIZE SEE MANUFACTURES SUGGESTIONS.
6. MAINTAIN 8' WORKING CLEARANCES SHOWN ON DETAIL 3B.

TABLE 1

OPTION	CABLE VAULT SIZE	REFERENCE CONST. STANDARD	A	EASEMENT REQUIRED
2A	11'-4" X 6'-3 1/2"	CU-1600-3J	20'-4"	14'-3 1/2" X 20'-4"
2B	11'-4" X 6'-3 1/2"	CU-1600-3J	27'-4"	11'-3 1/2" X 27'-4"
3A	11'-4" X 6'-3 1/2"	CU-1600-3J	16'-4"	22'-3 1/2" X 16'-4"
3B	11'-4" X 6'-3 1/2"	CU-1600-3J	19'-4"	15'-3 1/2" X 19'-4" (NOTE 6)

UPDATED TO MOVE OPTION 1 TO MAINTENANCE

FILENAME: CU1600-5 REV10

CITY OF ANAHEIM PUBLIC UTILITIES DEPARTMENT ELECTRICAL DIVISION T&D CONSTRUCTION STANDARDS	REVISION KEYS:	 ADDED / REVISED TEXT	 ADDED / REVISED MATERIAL	NEW SHEET	NEW SHEET										
	12KV PADMOUNT SWITCH VAULT INSTALLATION AND CONDUIT ARRANGEMENT				REVISION NO.	10									
					ISSUE DATE :	01-16									
					SHEET	3 OF 3									
APPROVALS <table border="1"> <tr> <td>PREP BY</td> <td>T&D MGR</td> <td>SYS PLN MGR</td> <td>OPS MGR</td> <td>SUB MAINT</td> </tr> <tr> <td>MH</td> <td>EB</td> <td>--</td> <td>AT</td> <td>--</td> </tr> </table>				PREP BY	T&D MGR	SYS PLN MGR	OPS MGR	SUB MAINT	MH	EB	--	AT	--	CONSTRUCTION STANDARD: CU 1600-5	
PREP BY	T&D MGR	SYS PLN MGR	OPS MGR	SUB MAINT											
MH	EB	--	AT	--											