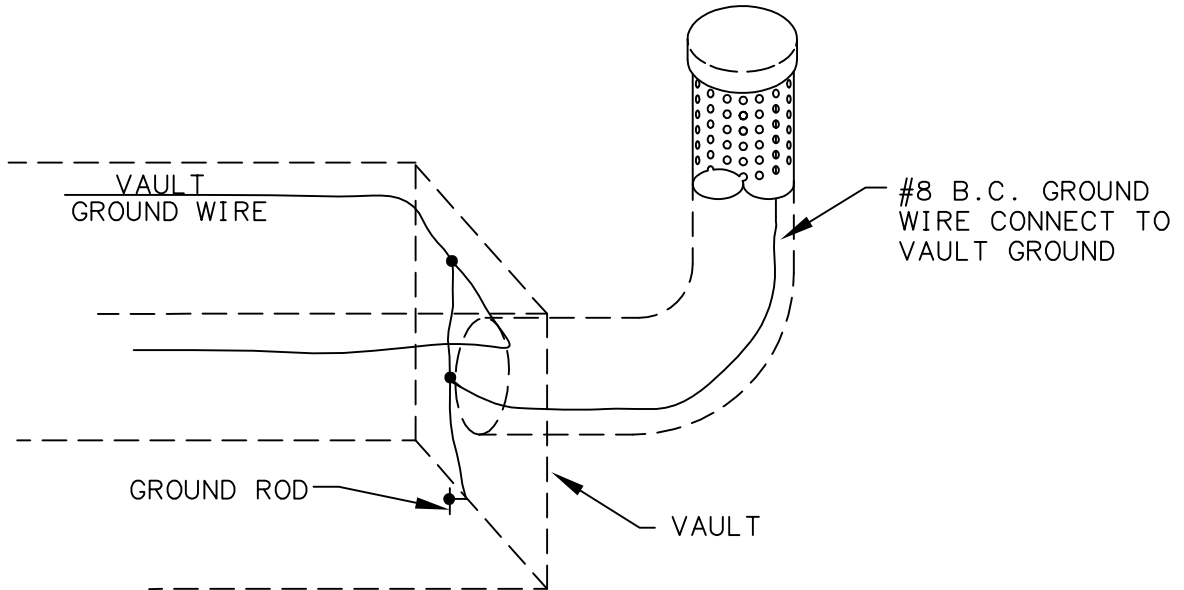
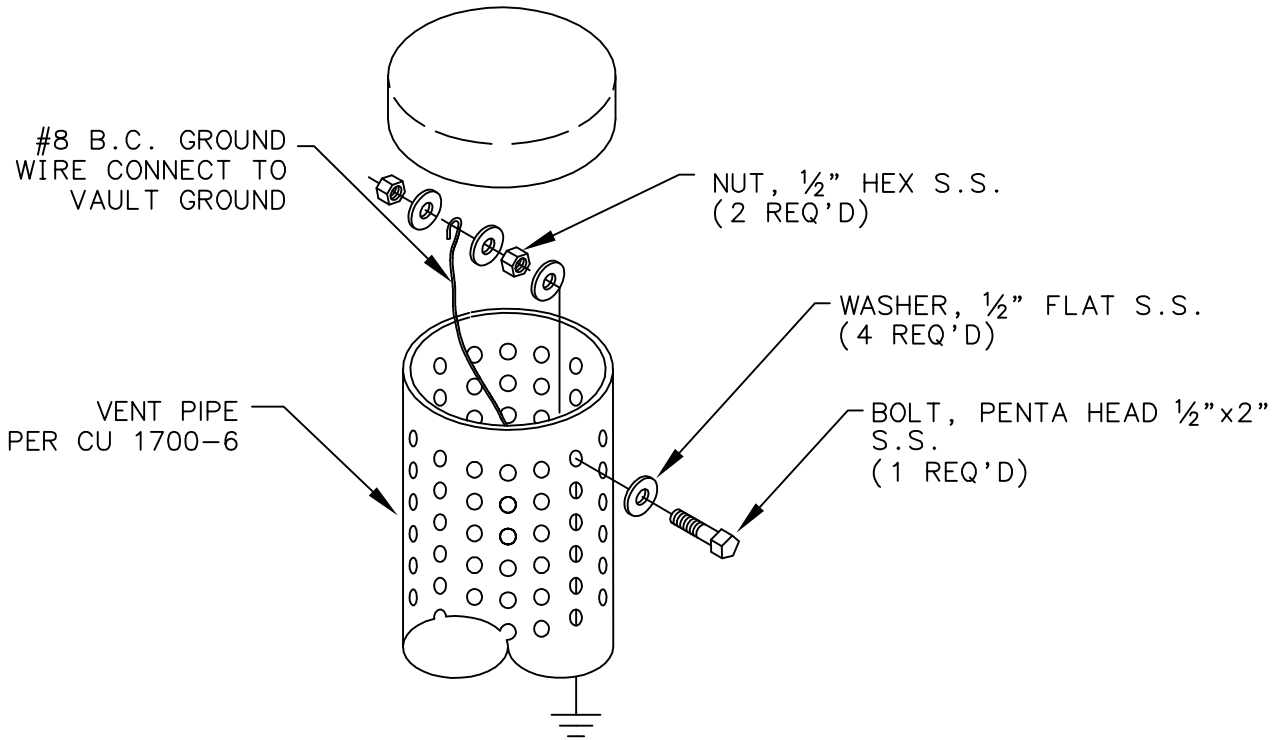


SCOPE: TO PROVIDE AN ABOVE GROUND CONNECTION POINT TO ASSIST IN LOCATING UNDERGROUND STRUCTURES AND CABLE FROM THE SURFACE.



NOTES:

INSTALLATION SHALL BE MADE DURING NEW CONSTRUCTION, ADDED DURING ROUTINE MAINTENANCE, OR AS THE NEED ARISES.

FILENAME: CU1700-7 REV0

CITY OF ANAHEIM PUBLIC UTILITIES DEPARTMENT ELECTRICAL DIVISION T&D CONSTRUCTION STANDARDS	REVISION KEYS: ADDED / REVISED TEXT ADDED / REVISED MATERIAL NEW SHEET	REVISION NO. 0 ISSUE DATE: 03-03 SHEET 1 OF 1 CONSTRUCTION STANDARD: CU 1700-7
	ACCESSIBLE GROUND CONNECTION THRU VAULT VENTS	
	APPROVALS T&D MGR FIELD MGR OPER. MGR JT	