

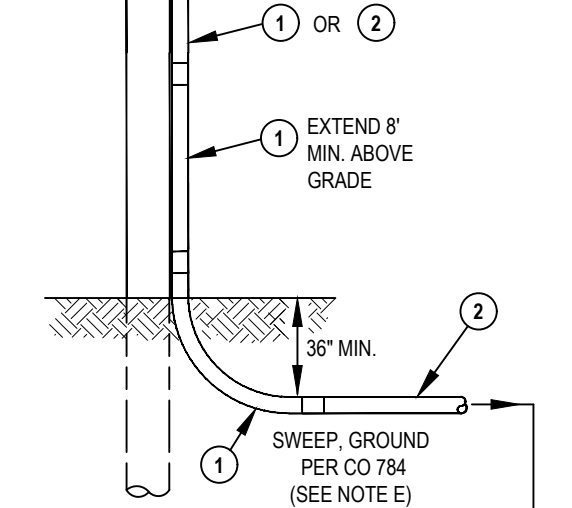
SCOPE: THIS STANDARD SHOWS CUSTOMER INSTALLED U.G. ELECTRIC SERVICE TO SPRINKLER CONTROLLERS.

GRIP
POLE
TO UTILITY O.H. SECONDARY CONDUCTORS VERIFY LENGTH WITH UTILITY INSPECTOR

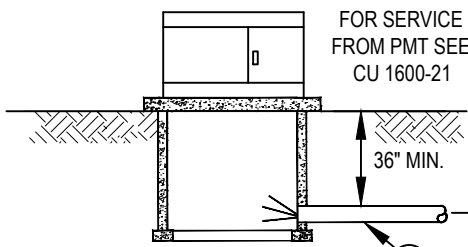
CONDUIT AND CONDUCTOR LEGEND

- ① 1" RIGID GALV. STEEL
- ② 1" GRAY PVC SCHED. 40
- ③ 1" GRAY PVC D.B.

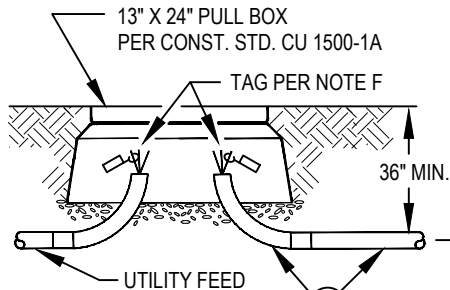
CONDUCTORS FOR ① ② ③ { 3-#6 CU THHN OR THW MIN.



RISER POLE
SEE NOTE D

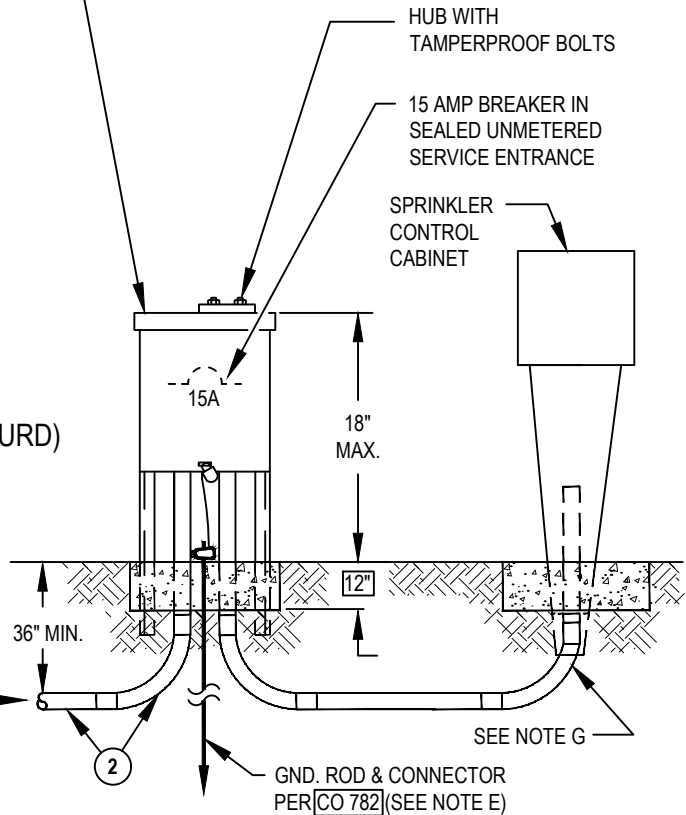


**PADMOUNT TRANSFORMER (PMT)
OR SUBSURFACE TRANSFORMER (BURD)**



PULL BOX

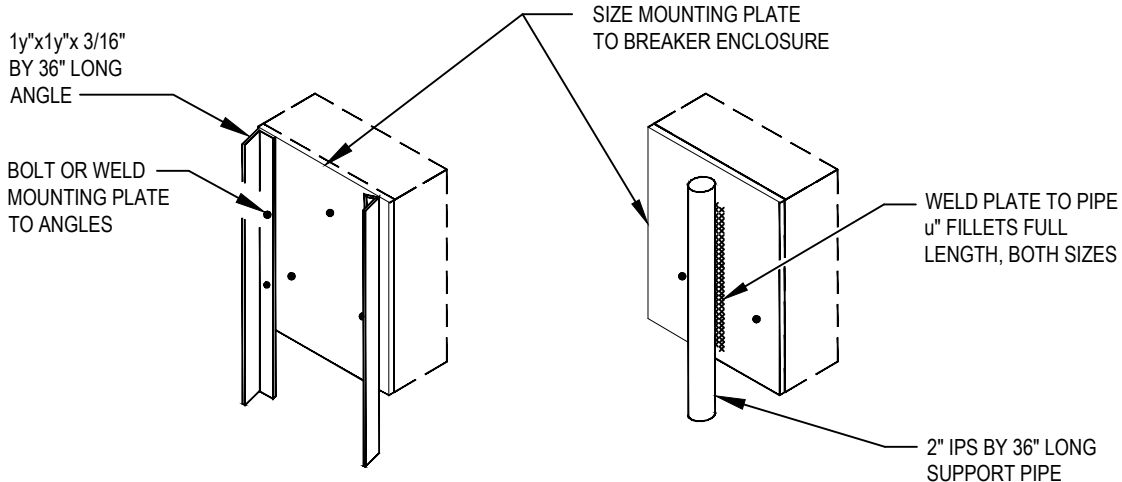
SERVICE ENTRANCE ENCLOSURE
40 AMP MIN., NEMA 3R BREAKER ENCLOSURE,
(G.E. NO. TL240RCU) WITH 15 AMP PLUG IN
BREAKER (TWO POLE 15 AMP- GE # THQL2115,
SINGLE POLE- GE #THQL1115). POUR 24" x 24" x 12"
CONCRETE BASE AFTER SUPPORT AND CONDUIT
INSTALLATION (SEE PAGE 2). STENCIL ADDRESS
ON STREET SIDE AND INSIDE OF COVER



ADD SHEET 2

FILENAME: CU 1600-26 REV 6

CITY OF ANAHEIM PUBLIC UTILITIES DEPARTMENT ELECTRICAL DIVISION T&D CONSTRUCTION STANDARDS		REVISION KEYS:		ADDED / REVISED TEXT	ADDED / REVISED MATERIAL	NEW SHEET	NEW SHEET									
		CUSTOMER INSTALLED U.G. ELECTRIC SERVICE TO SPRINKLER CONTROLLERS				REVISION NO. 6	ISSUE DATE: 01-17	SHEET 1 OF 2								
APPROVALS <table border="1" style="width: 100%; border-collapse: collapse;"> <tr> <td style="width: 25%;">PREP BY</td> <td style="width: 25%;">T&D MGR</td> <td style="width: 25%;">SYS PLN MGR</td> <td style="width: 25%;">OPS MGR</td> <td style="width: 25%;">SUB MAINT</td> </tr> <tr> <td>MH</td> <td>EB</td> <td>N/A</td> <td>DA</td> <td>N/A</td> </tr> </table>		PREP BY	T&D MGR	SYS PLN MGR	OPS MGR	SUB MAINT	MH	EB	N/A	DA	N/A			CONSTRUCTION STANDARD: CU 1600-26		
PREP BY	T&D MGR	SYS PLN MGR	OPS MGR	SUB MAINT												
MH	EB	N/A	DA	N/A												



METHOD OF SUPPORTING BREAKER ENCLOSURE

DEBURR PLATE & SUPPORT(S).
 APPLY 2 COATS GRAY RUST-O-LEUM PAINT OVER PRIMER.
 SUPPORT(S) TO EXTEND THRU 24"x24"x3y" CONCRETE BASE.

DETAIL "A"

NOTES:

- A. ELECTRICAL SERVICE SHALL BE PROVIDED IN ACCORDANCE WITH CITY OF ANAHEIM RATES, RULES AND REGULATIONS, RULE 9.A.3, FOR UNMETERED SERVICE, UPON REQUEST (IN WRITING) WHERE THE APPLICANT FOR SERVICE HAS A FIXED CONNECTED LOAD.
- B. ELECTRICAL PERMIT MUST BE OBTAINED FROM CITY OF ANAHEIM BUILDING DEPARTMENT PRIOR TO START OF WORK. ASSIGNED ADDRESS SHALL BE STENCILED ON STREET SIDE OF SERVICE ENTRANCE ENCLOSURE.
- C. CONTRACTOR TO FURNISH ALL TRENCHING, BACKFILL, COMPACTION AND MATERIAL INCLUDING CONDUIT AND CONDUCTORS FROM SERVICE ENTRANCE ENCLOSURE TO UTILITIES DESIGNATED POINT OF SERVICE AS SHOWN ON ELECTRICAL DIVISION WORK ORDER DRAWING. VERIFY WITH ELECTRICAL DIVISION UTILITY INSPECTOR.
- D. RISER, IF REQUIRED, SHALL BE INSTALLED ON FACE OF RISER POLE AWAY FROM TRAFFIC OR AS DESIGNATED ON ELECTRICAL DIVISION WORK ORDER DRAWING. CONTRACTOR SHALL PROVIDE KELLUM GRIP OF CORRECT SIZE TO SUPPORT CONDUCTORS IN RISER.
- E. CONTRACTOR SHALL FURNISH AND INSTALL GROUNDING MATERIAL FOR HDG (GALVINIZED STEEL) CONDUIT PER CO 784 CO 782.
- F. ELECTRICAL DIVISION FIELD CREW TO BUILD RISER, ASSIST CONTRACTOR IN PULLING OF SERVICE CONDUCTORS FROM SERVICE ENTRANCE ENCLOSURE TO DESIGNATED POINT OF SERVICE AND TAG CONNECTORS PER CO 170. SEAL SERVICE ENTRANCE ENCLOSURE UPON ENERGIZING.
- G. DEPTH, SIZE AND TYPE OF CONDUIT AND CONDUCTORS FROM SERVICE ENTRANCE ENCLOSURE (BREAKER SECTION) TO SPRINKLER CONTROL CABINET SHALL BE SPECIFIED BY:
 - (a) APPROPRIATE DEPARTMENT OF CITY OF ANAHEIM, IF CITY OWNED.
 - (b) CITY OF ANAHEIM BUILDING DEPARTMENT, ELECTRICAL INSPECTOR SECTION, IF RESIDENTIAL OR COMMERCIAL / INDUSTRIAL INSTALLATION.

ADD SHEET 2

FILENAME: CU 1600-26 REV 6

CITY OF ANAHEIM PUBLIC UTILITIES DEPARTMENT ELECTRICAL DIVISION T&D CONSTRUCTION STANDARDS		REVISION KEYS:	ADDED / REVISED TEXT	ADDED / REVISED MATERIAL	NEW SHEET	NEW SHEET	
		CUSTOMER INSTALLED U.G. ELECTRIC SERVICE TO SPRINKLER CONTROLLERS				REVISION NO. 6	ISSUE DATE: 01-17
APPROVALS PREP BY: <i>MH</i> T&D MGR: <i>EB</i> SYS PLN MGR: <i>N/A</i> OPS MGR: <i>DA</i> SUB MAINT: <i>N/A</i>		SHEET 2 OF 2				CONSTRUCTION STANDARD: CU 1600-26	