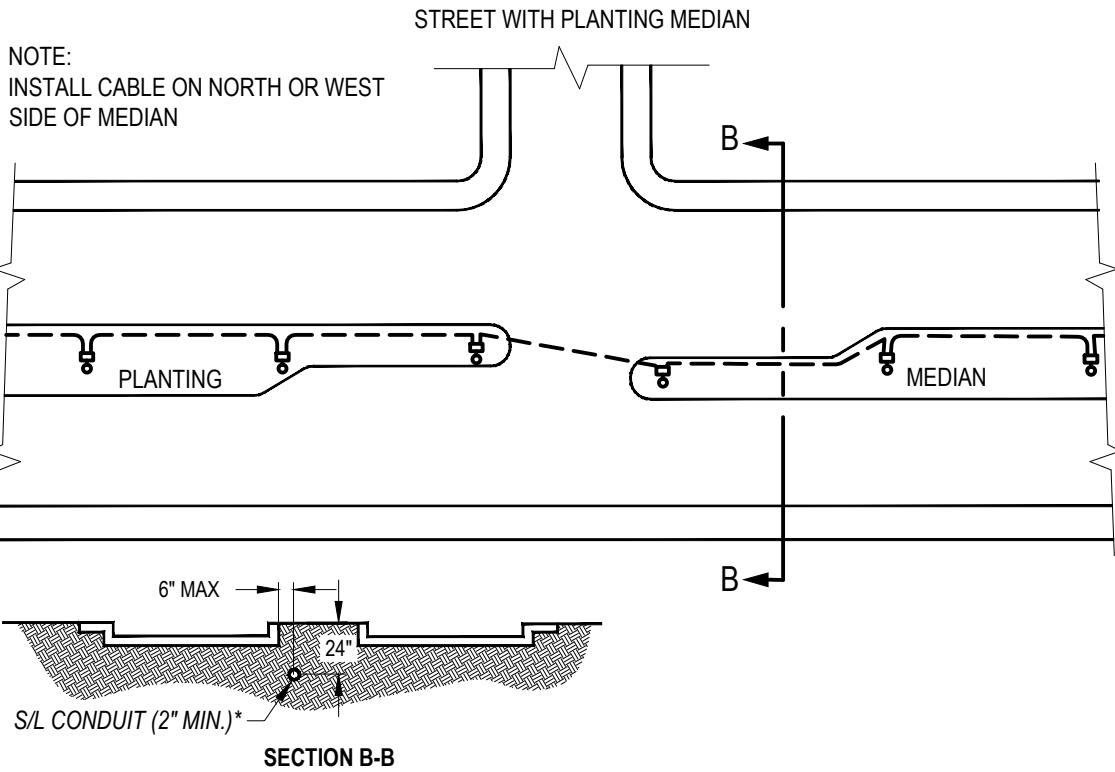
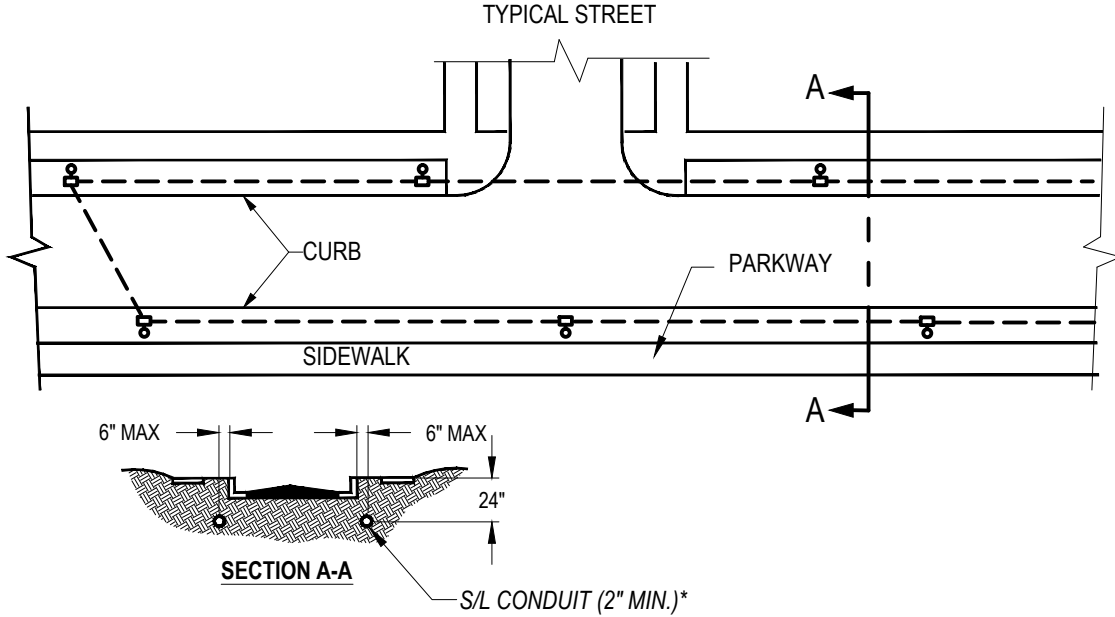


SCOPE: THIS STANDARD SHOWS REQUIREMENTS FOR UNDERGROUND STREET LIGHT CABLE LOCATION.



NOTE:
INSTALL CABLE ON NORTH OR WEST
SIDE OF MEDIAN

NOTES:
*STREET LIGHT CONDUIT SHALL BE A MINIMUM OF 2 IN. SCHEDULE 40 PVC. STREET AND DRIVEWAY CROSSINGS SHALL BE HOT DIPPED GALVANIZED STEEL. SWEEPS SHALL BE SHEDULE 80 PVC. CONDUIT FROM PULLBOX TO STANDARD SHALL BE 1" SCH 80. INSTALL AT ALL STREETLIGHTS.

FILENAME: L103 REV2

CITY OF ANAHEIM
PUBLIC UTILITIES DEPARTMENT
ELECTRICAL DIVISION
T&D CONSTRUCTION STANDARDS

REVISION KEYS:

ADDED / REVISED TEXT

ADDED / REVISED MATERIAL

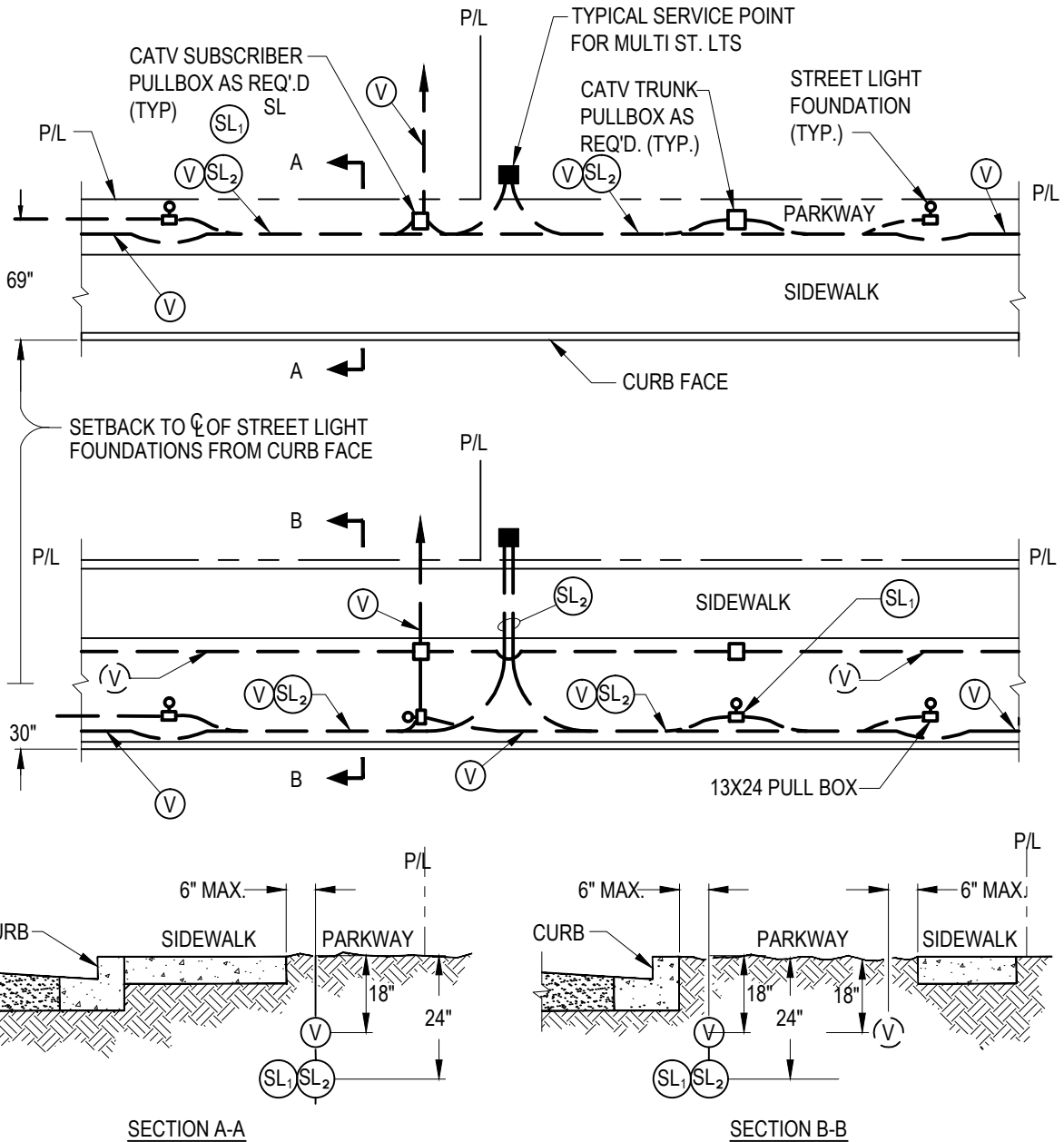
NEW SHEET

UNDERGROUND STREET LIGHT INSTALLATION REQUIREMENTS

REVISION NO. **2**
ISSUE DATE: **01-14**
SHEET **1** OF **2**
CONSTRUCTION STANDARD:
L 103

APPROVALS				
PREP BY	T&D MGR	SYS PLN MGR	OPS MGR	SUB MAINT
MH	EB	-	CMR	-

FILENAME: L103 REV2



LEGEND	
(V)	CONCURRENT JOINT TRENCH, CABLE TV
(V)	ALTERNATE LOCATION, CABLE TV
(SL ₂)	STREET LIGHT 2"
(SL ₁)	STREET LIGHT 1"

CITY OF ANAHEIM
 PUBLIC UTILITIES DEPARTMENT
 ELECTRICAL DIVISION
 T&D CONSTRUCTION STANDARDS

APPROVALS				
PREP BY	T&D MGR	SYS PLN MGR	OPS MGR	SUB MAINT
MH	EB	-	CMR	-

REVISION KEYS: ADDED / REVISED TEXT ADDED / REVISED MATERIAL

**UNDERGROUND STREET LIGHT
 INSTALLATION REQUIREMENTS**

RENAMED FROM L103A REV4

REVISION NO.	2
ISSUE DATE:	01-14
SHEET	2 OF 2
CONSTRUCTION STANDARD:	L 103