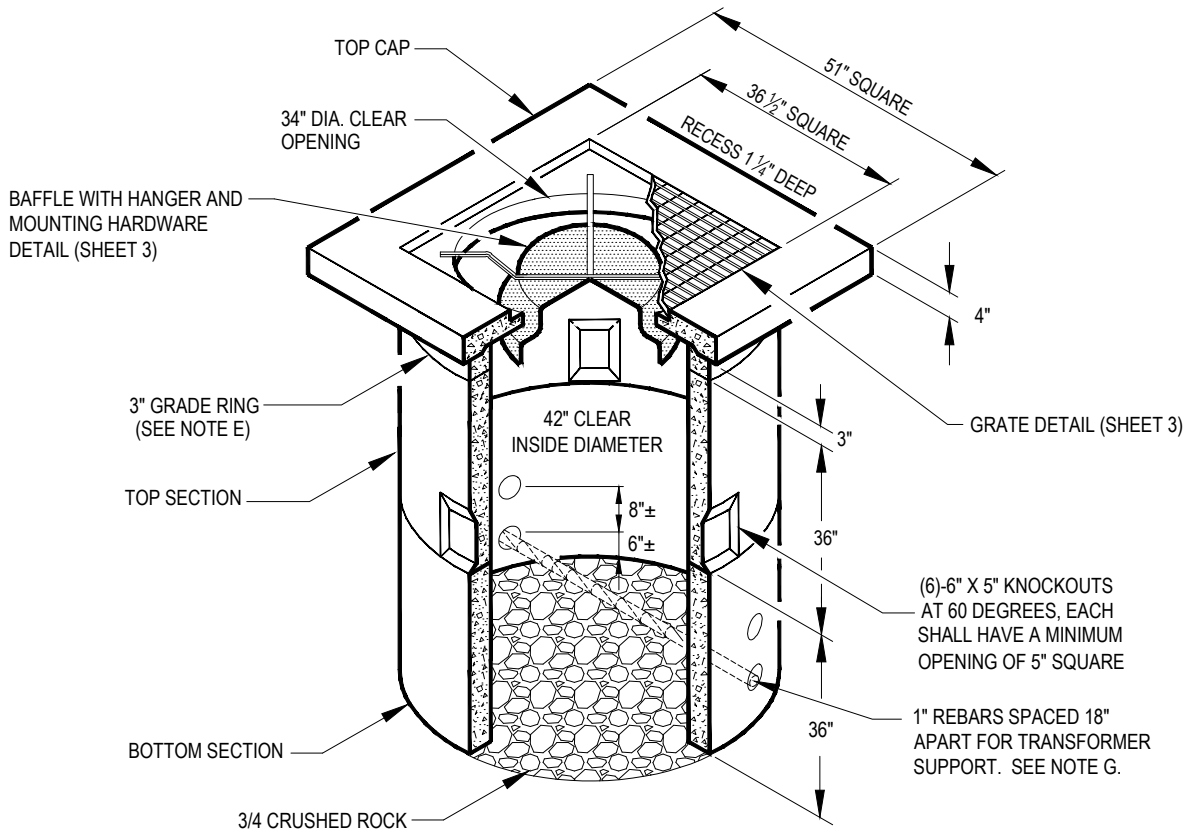


SCOPE: THIS STANDARD SHOWS CONCRETE HOLELINER REQUIREMENTS FOR SUBSURFACE TRANSFORMER INSTALLATIONS.

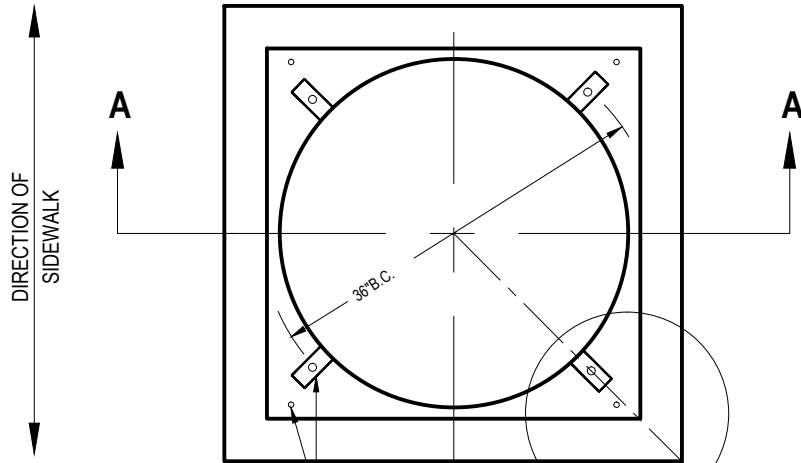


DESCRIPTION	QTY	MANUFACTURER	ANAHEIM PART NO.	ANAHEIM COMPATIBLE UNIT NO.
TOP CAP	1	JENSEN	480005	HLCONC-CAP
TOP SECTION	1	JENSEN	480010	HLCONC-TOP
BOTTOM SECTION	1	JENSEN	480015	HLCONC-BOTTOM
GRATE	1	JENSEN	480095	HLCONC-GRATE
REBAR **	2	-	480090	-
3" GRADE RING	AS REQ'D	JENSEN	480020	HLCONC-RING
BAFFLE	1	KAL-PLASTICS	480080	HLCONC-BAFF
BAFFLE HANGER	1	KAL-PLASTICS	480075	-
BAFFLE SKIRT	1	KAL-PLASTICS	480085	-
HOLE LINER	1	-	-	HLCONC

FILENAME: CU1500-9 REV12

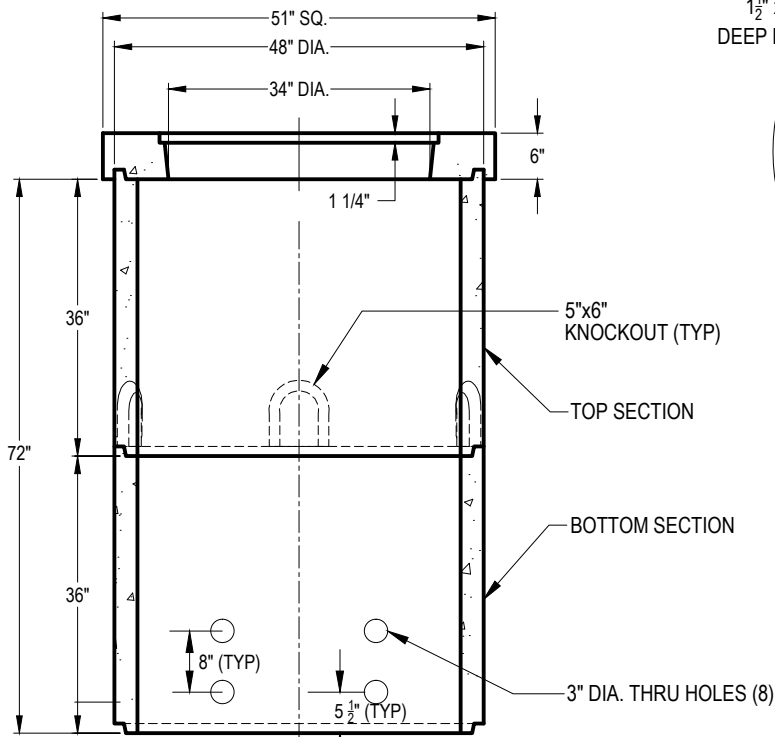
<p>CITY OF ANAHEIM PUBLIC UTILITIES DEPARTMENT ELECTRICAL DIVISION T&D CONSTRUCTION STANDARDS</p>	REVISION KEYS:	ADDED / REVISED TEXT	ADDED / REVISED MATERIAL										
	URD TRANSFORMER CONCRETE HOLE LINER												
	<table border="1" style="width: 100%; border-collapse: collapse;"> <tr> <td style="width: 25%;">PREP BY</td> <td style="width: 25%;">T&D MGR</td> <td style="width: 25%;">SYS PLN MGR</td> <td style="width: 25%;">OPS MGR</td> <td style="width: 25%;">SUB MAINT</td> </tr> <tr> <td>MH</td> <td>EB</td> <td>---</td> <td>DA</td> <td>---</td> </tr> </table>			PREP BY	T&D MGR	SYS PLN MGR	OPS MGR	SUB MAINT	MH	EB	---	DA	---
	PREP BY	T&D MGR	SYS PLN MGR	OPS MGR	SUB MAINT								
MH	EB	---	DA	---									
<table border="1" style="width: 100%; border-collapse: collapse;"> <tr> <td style="width: 50%;">REVISION NO. 12</td> <td style="width: 50%;">NEW SHEET</td> </tr> <tr> <td>ISSUE DATE: 01-16</td> <td>NEW SHEET</td> </tr> <tr> <td>SHEET 1 OF 4</td> <td></td> </tr> <tr> <td colspan="2">CONSTRUCTION STANDARD:</td> </tr> <tr> <td colspan="2" style="text-align: center; font-weight: bold; font-size: 1.2em;">CU 1500-9</td> </tr> </table>			REVISION NO. 12	NEW SHEET	ISSUE DATE: 01-16	NEW SHEET	SHEET 1 OF 4		CONSTRUCTION STANDARD:		CU 1500-9		
REVISION NO. 12	NEW SHEET												
ISSUE DATE: 01-16	NEW SHEET												
SHEET 1 OF 4													
CONSTRUCTION STANDARD:													
CU 1500-9													

FILENAME: CU1500-9 REV12

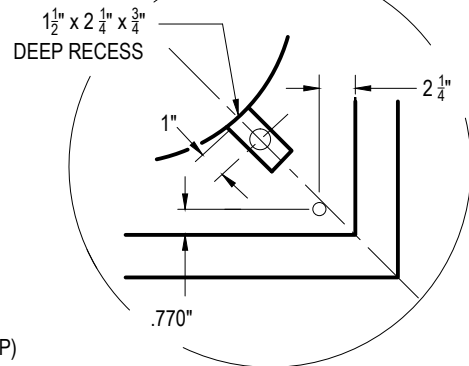


INSERTS
(SEE NOTE)

PLAN VIEW- TOP CAP



SECTION A-A



**INSERT LOCATION
DETAIL**

NOTE:

1. USE TAMPER PROOF $\frac{3}{8}$ " x $1\frac{1}{2}$ " x 16 ANAHEIM PART #550070, SEE DETAIL ON SHT 3

CITY OF ANAHEIM
PUBLIC UTILITIES DEPARTMENT
ELECTRICAL DIVISION
T&D CONSTRUCTION STANDARDS

REVISION KEYS:

ADDED / REVISED TEXT

ADDED / REVISED MATERIAL

NEW SHEET

NEW SHEET

**URD TRANSFORMER
CONCRETE HOLE LINER**

REVISION NO. 12

ISSUE DATE: 01-16

SHEET 2 OF 4

CONSTRUCTION STANDARD:

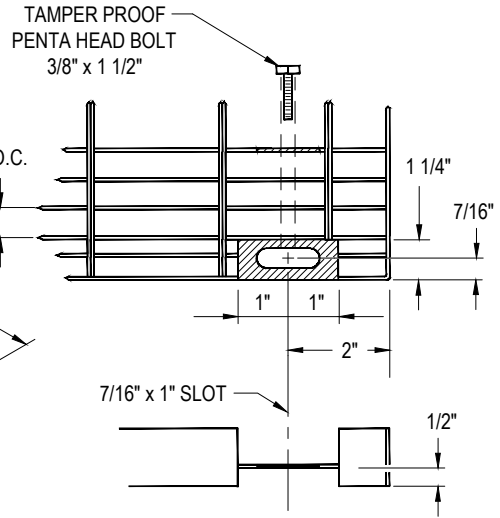
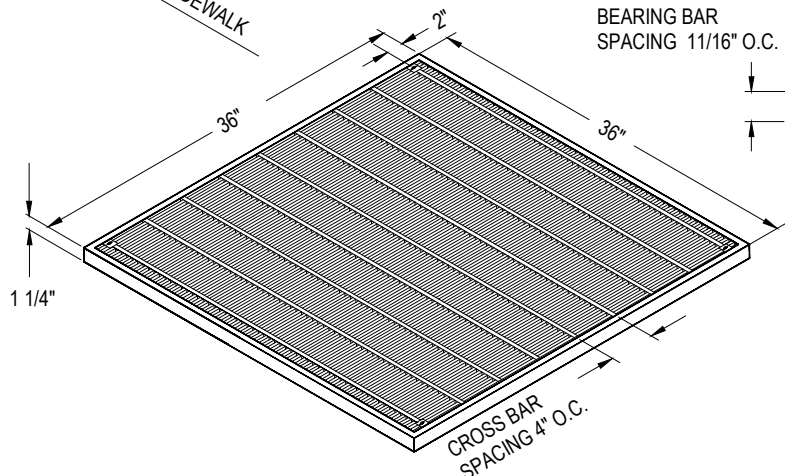
CU 1500-9

APPROVALS

PREP BY	T&D MGR	SYS PLN MGR	OPS MGR	SUB MAINT
MH	EB	---	---	---

GRATE

DIRECTION OF SIDEWALK



ANCHOR PLATE DETAIL
SEE NOTES 1, 2 & 3

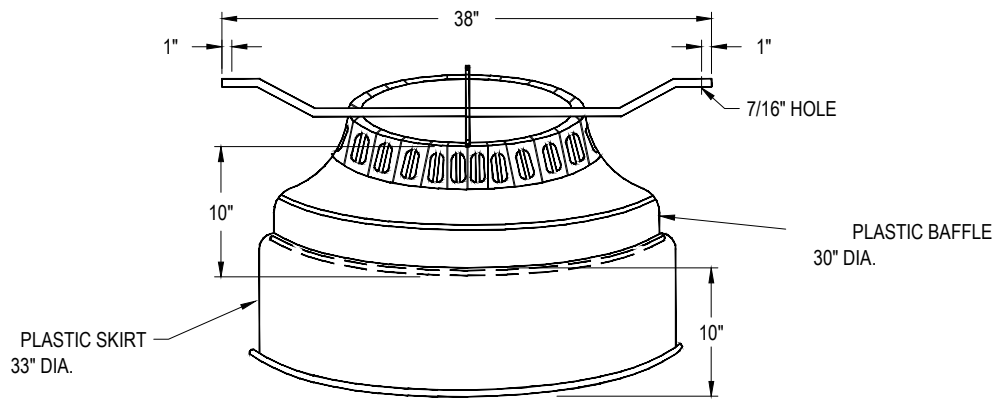
GRATING TYPE: 10-40-36ADA
1 1/4" x 3/16" BEARING BARS
FINISH: HOT DIP GALVANIZE AFTER FABRICATION

MAIN BAR SIZE	SAFE LOAD IN POUNDS 3 FOOT WIDTH	
	UNIFORM	CONCENTRATED
1 1/4" x 3/16"	716	1074
DEFLECTION IN INCHES	.130	.104

NOTES FOR GRATE:

1. ANCHOR PLATE TO BE WELDED 1/2" FROM BOTTOM OF GRATE.
2. ANCHOR PLATE SLOT 7/16" x 1".
3. ANCHOR PLATE TO BE INSTALLED IN EACH GRATE AT FOUR CORNERS.

BAFFLE



FILENAME: CU1500-9 REV12

CITY OF ANAHEIM PUBLIC UTILITIES DEPARTMENT ELECTRICAL DIVISION T&D CONSTRUCTION STANDARDS		REVISION KEYS:	ADDED / REVISED TEXT	ADDED / REVISED MATERIAL	NEW SHEET	NEW SHEET
		URD TRANSFORMER CONCRETE HOLE LINER				REVISION NO. 12
				ISSUE DATE: 01-16		
				SHEET 3 OF 4		
				CONSTRUCTION STANDARD:		
				CU 1500-9		

APPROVALS				
PREP BY	T&D MGR	SYS PLN MGR	OPS MGR	SUB MAINT
MH	EB	--	DA	--

NOTES:

- A. TRANSFORMER ENCLOSURE SHALL BE DESIGNED TO MEET THE REQUIREMENTS FOR H-20-44 BRIDGE LOADING USING 5,500 PSI (37.92MPa) COMPRESSIVE STRENGTH CONCRETE AND 60,000 PSI (413.2MPa) YIELD STRENGTH ASTM A-706 STEEL REINFORCEMENT.
- B. MINIMUM EXCAVATION SIZE: 52" SQUARE x 84" DEEP. SEE CU 1500-3B FOR ADITIONAL DETAILS.
- C. GRATE AND ROOF SECTION MUST BE DESIGNED FOR PARKWAY LOADING OF 300 PSF.
- D. WHEN REQUIRED, CONTRACTOR SHALL FURNISH AND INSTALL COMPLETE HOLE LINER WHICH INCLUDES: TOP CAP, GRATE, BAFFLE WITH HANGER, TOP SECTION, BOTTOM SECTION AND TRANSFORMER SUPPORTS.
- E. WHEN REQUIRED, CONTRACTOR SHALL FURNISH AND INSTALL 3" GRADE RINGS TO BRING TOP CAP TO FINAL GRADE. ORDER SEPARATELY. ALL PER THIS CONSTRUCTION STANDARD.
- F. FOR COMPLETE UNIT (WITH BAFFLE), SPECIFY JENSEN PART NUMBER K42-BTV68-16.
- G. GROUT REBAR IN PLACE TO PREVENT WATER AND DIRT INTRUSION.
- H. ORIENT REBARS PARALLEL TO ROAD.

FILENAME: CU1500-9 REV12

CITY OF ANAHEIM PUBLIC UTILITIES DEPARTMENT ELECTRICAL DIVISION T&D CONSTRUCTION STANDARDS		REVISION KEYS:	 ADDED / REVISED TEXT	 ADDED / REVISED MATERIAL	NEW SHEET	NEW SHEET										
		URD TRANSFORMER CONCRETE HOLE LINER				REVISION NO. 12	ISSUE DATE : 01-16									
APPROVALS <table border="1"> <thead> <tr> <th>PREP BY</th> <th>T&D MGR</th> <th>SYS PLN MGR</th> <th>OPS MGR</th> <th>SUB MAINT</th> </tr> </thead> <tbody> <tr> <td>MH</td> <td>EB</td> <td>--</td> <td>DA</td> <td>--</td> </tr> </tbody> </table>		PREP BY	T&D MGR	SYS PLN MGR	OPS MGR	SUB MAINT	MH	EB	--	DA	--			SHEET 4 OF 4	CONSTRUCTION STANDARD: CU 1500-9	
PREP BY	T&D MGR	SYS PLN MGR	OPS MGR	SUB MAINT												
MH	EB	--	DA	--												