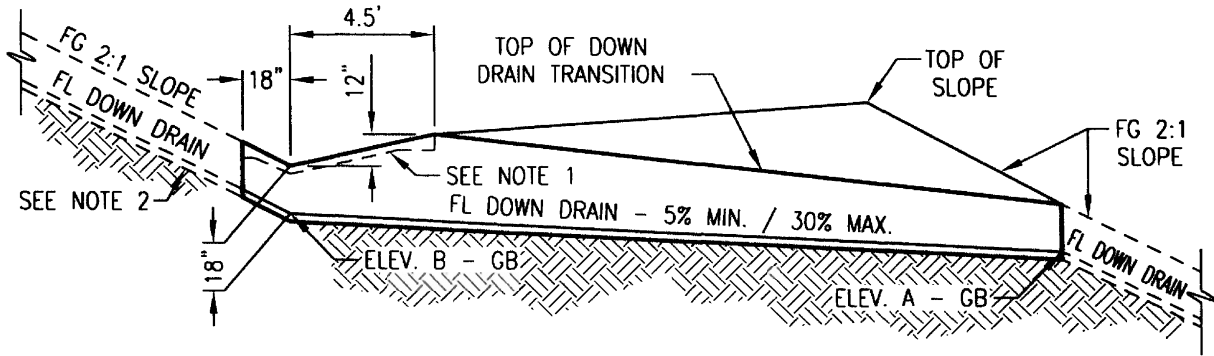


**FLOW THRU INTERSECTION**

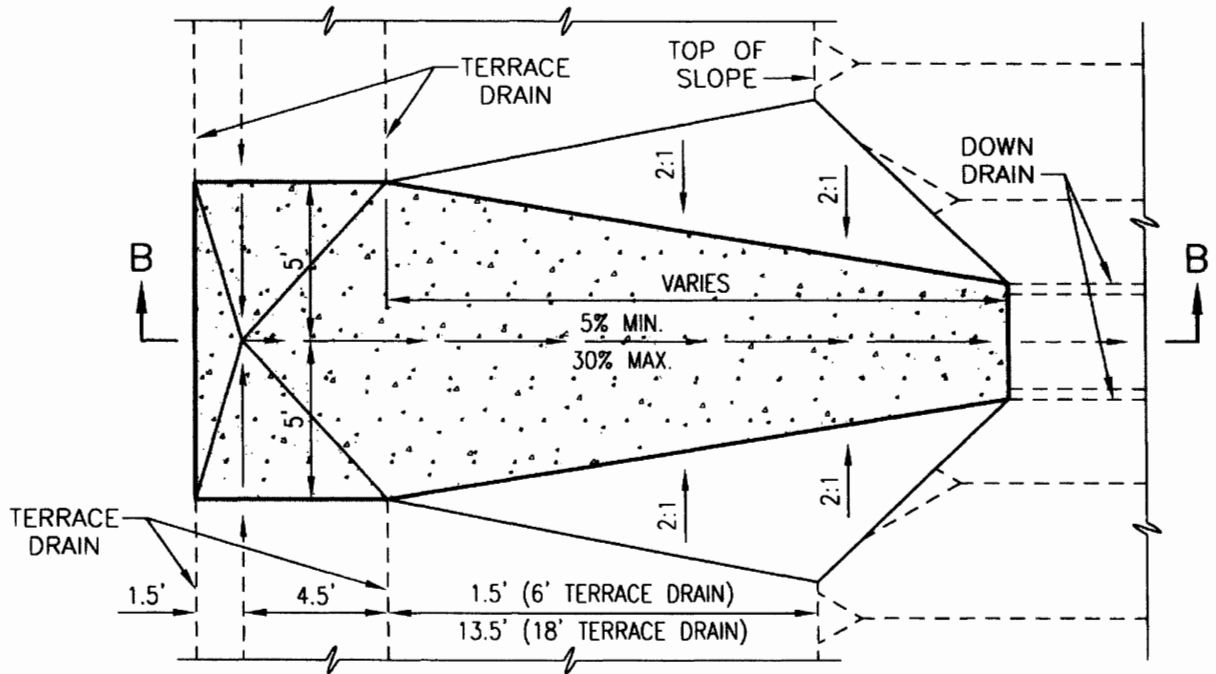
N.T.S.



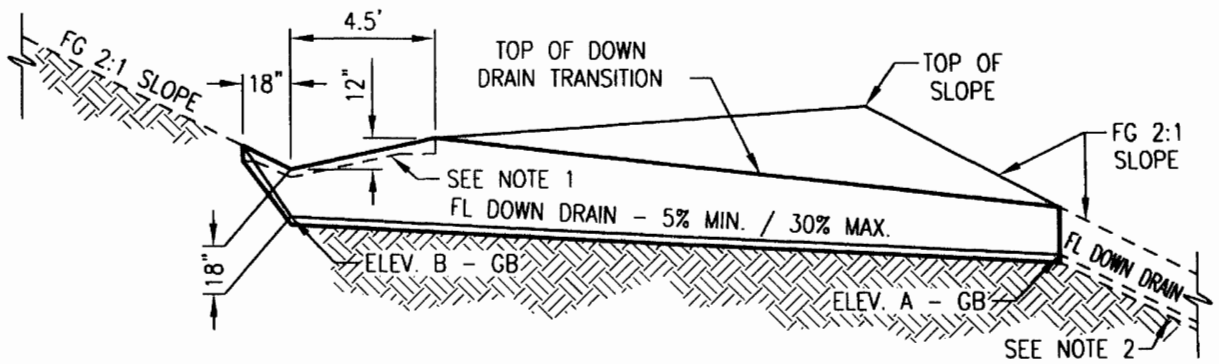
**SECTION A-A**

N.T.S.

REC'D	<i>[Signature]</i> DEPUTY CITY ENGINEER	11/17/04 DATE	APP.	<i>[Signature]</i> C.P.W. / CITY ENGINEER	11-18-04 DATE	REVISED	BY
CITY OF ANAHEIM DEPARTMENT OF PUBLIC WORKS							
<b>DOWN DRAIN INTERSECTIONS AND OUTLETS</b>						STANDARD DETAIL NO.	
USE WITH STANDARD SPECIFICATIONS FOR PUBLIC WORKS CONSTRUCTION						<b>394</b>	
						SHEET 1 OF 6	

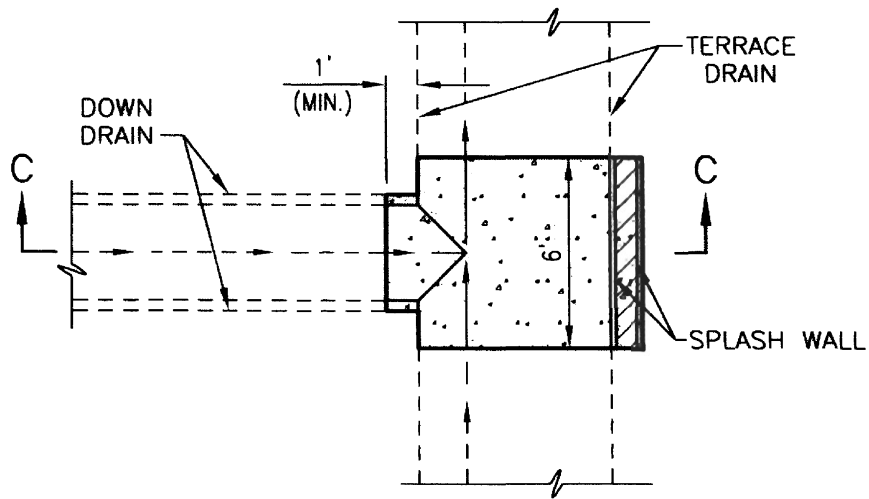


**UPSTREAM 'T' INTERSECTION**  
N.T.S.



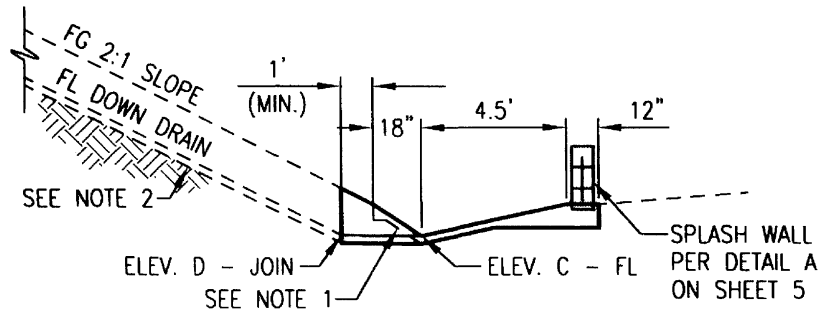
**SECTION B-B**  
N.T.S.

REC'D	<i>[Signature]</i> 11/17/04 DEPUTY CITY ENGINEER DATE	APP.	<i>[Signature]</i> 11-18-04 D.P.W. / CITY ENGINEER DATE	REVISED	BY
CITY OF ANAHEIM DEPARTMENT OF PUBLIC WORKS					
<b>DOWN DRAIN INTERSECTIONS AND OUTLETS</b>				STANDARD DETAIL NO.	
USE WITH STANDARD SPECIFICATIONS FOR PUBLIC WORKS CONSTRUCTION				<b>394</b>	SHEET 2 OF 6



**SPLASH WALL OUTLET**

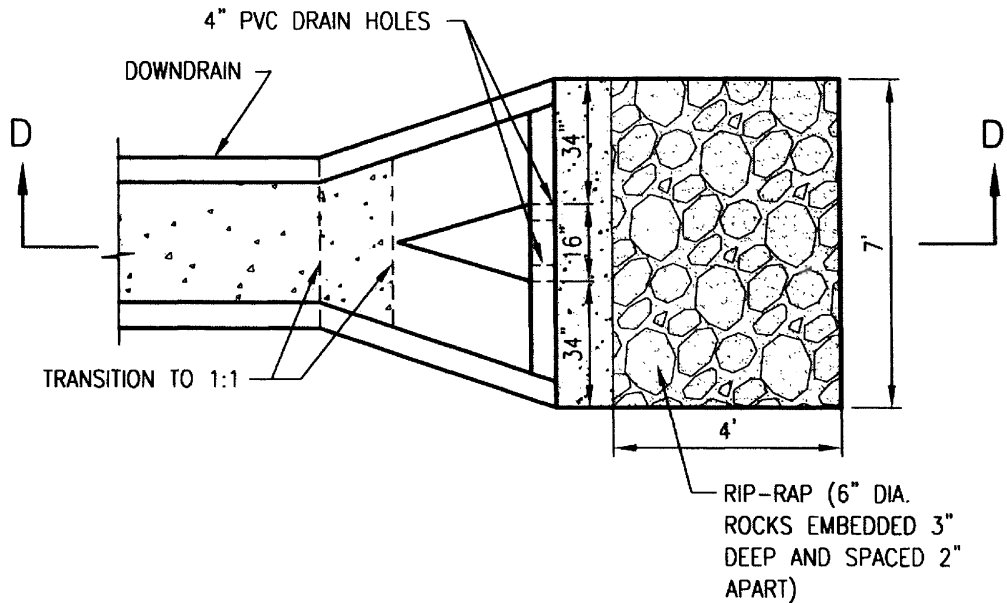
N.T.S.



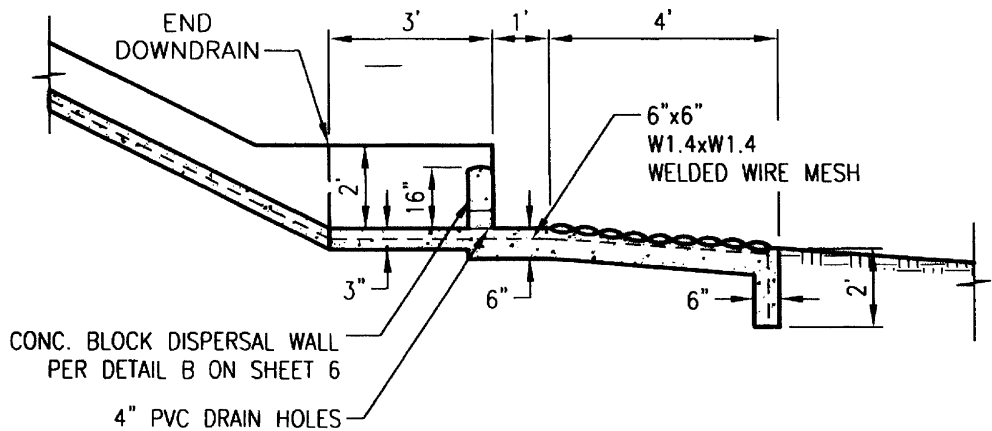
**SECTION C-C**

N.T.S.

REC'D	<i>[Signature]</i>	11/12/04	APP.	<i>[Signature]</i>	11-13-04		
	DEPUTY CITY ENGINEER	DATE		D.P.W. CITY ENGINEER	DATE	REVISED	BY
CITY OF ANAHEIM DEPARTMENT OF PUBLIC WORKS							
<b>DOWN DRAIN INTERSECTIONS AND OUTLETS</b>						STANDARD DETAIL NO.	
USE WITH STANDARD SPECIFICATIONS FOR PUBLIC WORKS CONSTRUCTION						<b>394</b>	
						SHEET 3 OF 6	

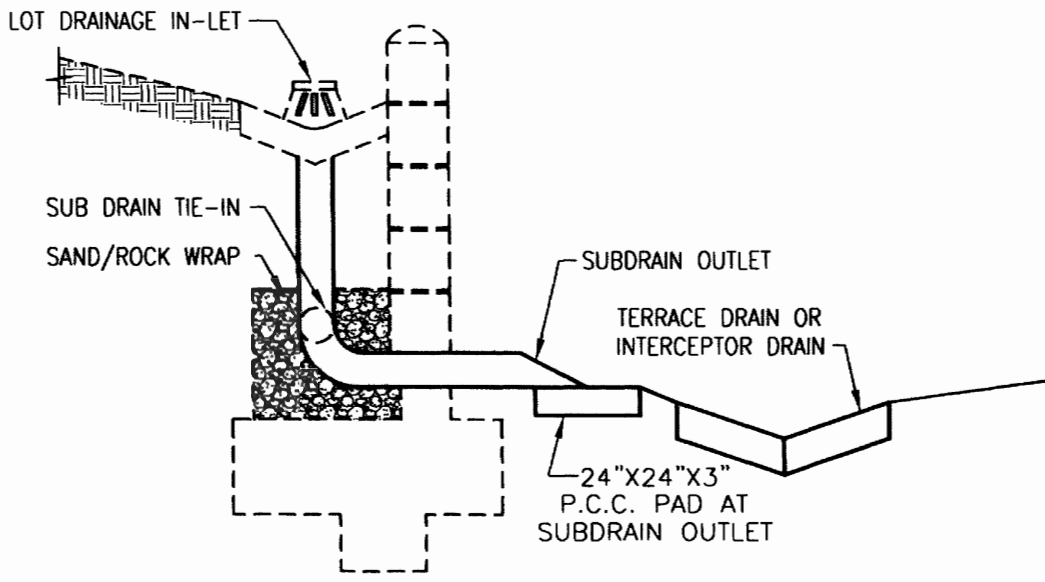


**DISPERSAL WALL OUTLET TO RIP RAP**  
N.T.S.

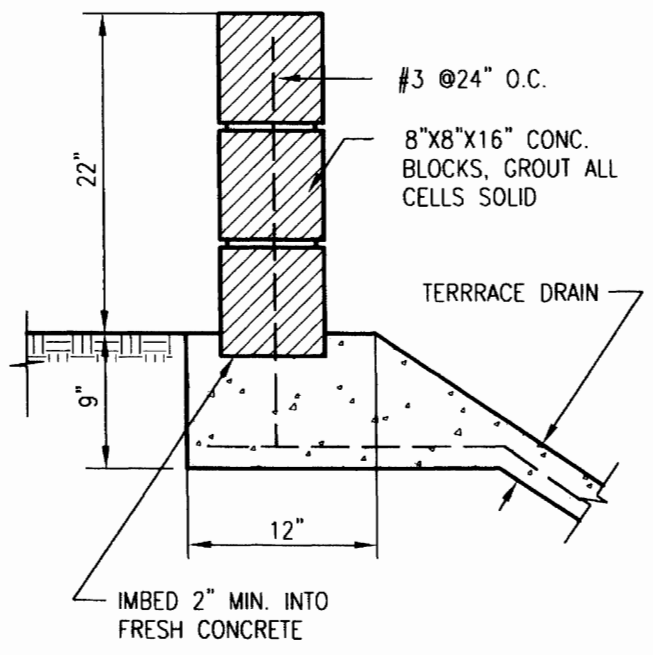


**SECTION D-D**  
N.T.S.

REC'D	<i>[Signature]</i>	11/17/04	APP	<i>[Signature]</i>	11-18-04		
	DEPUTY CITY ENGINEER	DATE		D.P.W. / CITY ENGINEER	DATE	REVISED	BY
CITY OF ANAHEIM DEPARTMENT OF PUBLIC WORKS							
<b>DOWN DRAIN INTERSECTIONS AND OUTLETS</b>						STANDARD DETAIL NO.	
USE WITH STANDARD SPECIFICATIONS FOR PUBLIC WORKS CONSTRUCTION						<b>394</b>	
						SHEET 4 OF 6	

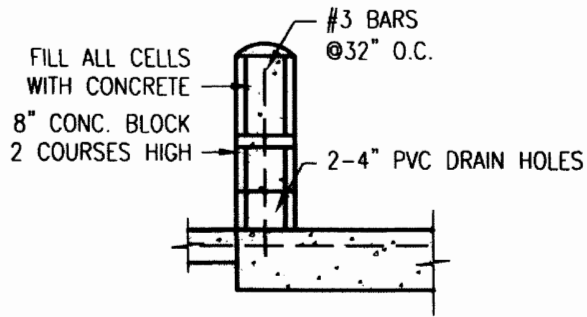


**WALL SUBDRAIN OUTLET**  
N.T.S.



**DETAIL A - SPLASH WALL**  
N.T.S.

REC'D	<i>[Signature]</i> 11/17/04	APP	<i>[Signature]</i> 11/18/04		
	DEPUTY CITY ENGINEER	DATE	CITY ENGINEER	DATE	REVISED BY
CITY OF ANAHEIM DEPARTMENT OF PUBLIC WORKS					
<b>DOWN DRAIN INTERSECTIONS AND OUTLETS</b>				STANDARD DETAIL NO.	
				<b>394</b>	
USE WITH STANDARD SPECIFICATIONS FOR PUBLIC WORKS CONSTRUCTION				SHEET 5 OF 6	



**DETAIL B – DISPERSAL WALL**  
N.T.S.

**NOTES:**

1. TERRACE DRAIN PER STANDARD DETAIL NO. 392.
2. DOWN DRAIN PER STANDARD DETAIL NO. 393.
3. ELEVATIONS A, B, C AND D SHALL BE PER THE PROJECT PLANS, AS NECESSARY.
4. DRAIN HOLES THROUGH DISPERSAL WALL SHALL BE CORE DRILLED THROUGH MASONRY BLOCK. 4" PVC (SCH. 80) PIPE SHALL BE INSERTED INTO CORE HOLE AND HELD IN PLACE BY MORTAR.

REC'D	 DEPUTY CITY ENGINEER	11/17/04 DATE	APP	 D.P.W. / CITY ENGINEER	11/18/04 DATE				
CITY OF ANAHEIM DEPARTMENT OF PUBLIC WORKS									
<b>DOWN DRAIN INTERSECTIONS AND OUTLETS</b>								STANDARD DETAIL NO. <b>394</b>	
USE WITH STANDARD SPECIFICATIONS FOR PUBLIC WORKS CONSTRUCTION								SHEET 6 OF 6	